



[Print Page](#)

RAS Home

+ Report Summaries

[Run Reports](#)
[Rangeland Map](#)
[FAQs](#)
[Contact Us](#)

Bureau of Land Management's Rangeland Administration System (RAS)

The Bureau of Land Management (BLM) administers 258 million surface acres of public land. Most of this public land is located in the 12 Western States. The BLM manages rangelands throughout the west for the use of wildlife and livestock.

The rangelands are divided into allotments and pastures for management purposes.

The Rangeland Administration System (RAS) provides grazing administrative support and management reports for the BLM and the public. The Rangeland Administration system serves as an electronic calendar for issuance of approximately 18,000 applications and 2,400 grazing authorizations (Permits, Leases, and Exchange-of-Use Agreements) per year, eliminating the need for manually processing these forms. RAS also creates approximately 30,000 grazing bills per year. RAS provides distribution information to the Collections and Billings System (CBS) for tracking, collecting, and distributing grazing receipts. Additionally, the system maintains electronic files about allotments, authorizations, and grazing bill history.

On December 29, 2010, the Bureau of Land Management (BLM) published a notice in the *Federal Register* (Vol. 75, Number 249, pp. 82061 - 82064 [Bureau of Land Management's Range Management System—Interior, LLM-2; Notice To Amend an Existing System of Records; Privacy Act of 1974; as Amended]) proposing to change the way BLM manages and releases grazing permit and lease information, including names and addresses. This change became final on February 8, 2011. This website provides information about grazing administration on the National System of Public Lands, including names and addresses of all grazing permit and lease holders who graze livestock on these lands. This information is provided in consideration of a United States District Court, District of Idaho decision in Case No. CV 09-482-CWD. In that case, the Court found that there was substantial public interest in understanding the scope of the grazing and rangeland program, including knowing how many individuals or entities actually graze cattle on public lands, as well as the size and scope of their operations, and that this public interest outweighed the permit holders' privacy interest in their names, addresses and authorization numbers. The change makes the routine use of grazing administration information by BLM and U.S. Forest Service more consistent.

The reports available on this website are generated from the information stored in the BLM rangeland administration electronic database. They include allotment information and operator information. Allotment information provided includes: allotment identification; size; amount of private, state and public land administered; amount of forage use authorized, both active and suspended, for all operators using the allotment; proportion of forage in the allotment produced on public land; existence of an allotment management plan and identification of the grazing operator(s). Operator information provided includes the: authorization number; name, address and date the authorization was issued, including expiration date; allotments used by operator; kind and number of livestock; and period of use and forage amount authorized for use by the operator.

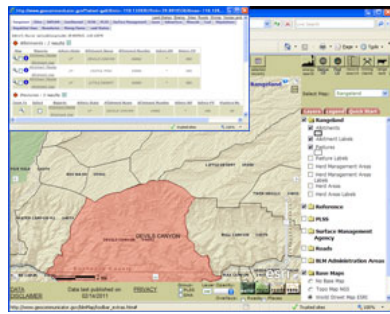
The following public Rangeland Administration Reports (RAS) are available from this website. For information on the report click on the Report Summaries or on any of the following reports. **To run reports you must have TLS 1.0 enabled on your Internet Browser, see instructions.**

- [Allotment Information](#)
- [Allotment Master](#)
- [Authorized Use by Allotment](#)
- [Operator Information](#)
- [Permits Schedule Information](#)

GeoCommunicator Maps

To view the range allotments and pasture in an interactive mapping environment go to the GeoCommunicator Web site. The allotment master and use reports from the RAS system are also available from GeoCommunicator when using the Identify Tool.

[Rangeland mapping guide](#)
[Rangeland Interactive Maps](#)
[in GeoCommunicator](#)
[GeoCommunicator Home](#)
[Page](#)



GeoCommunicator Rangeland Map Viewer

Last updated: 12-04-12

[USA.GOV](#) | **[No Fear Act](#)** | **[DOI](#)** | **[Disclaimer](#)** | **[About BLM](#)** | **[Notices](#)** | **[Get Adobe Reader®](#)**
[Privacy Policy](#) | **[FOIA](#)** | **[Kids Policy](#)** | **[Contact Us](#)** | **[Accessibility](#)** | **[Site Map](#)** | **[Home](#)**