

**Resolution Copper Project and Land Exchange
Environmental Impact Statement**

USDA Forest Service
Tonto National Forest
Arizona

January 15, 2021

FEIS/DROD Map Package

**Prepared by:
SWCA Environmental Consultants**

Contents of Map Package

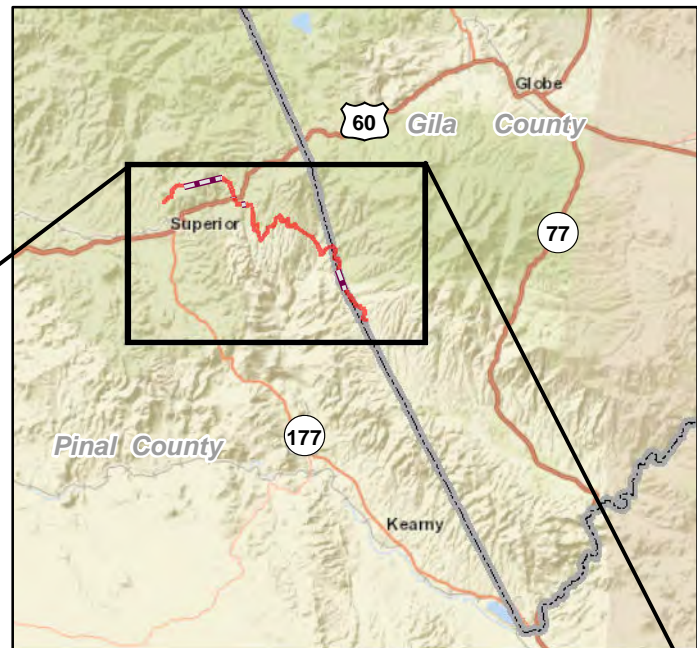
This compilation of maps has been extracted from the Final Environmental Impact Statement (FEIS) and Draft Record of Decision (DROD) for the Resolution Copper Project, released on January 15, 2021.

These maps focus on the preferred alternative as identified in the FEIS (Alternative 6 – Skunk Camp), and those components of the project described in the DROD for which the Forest Service will authorize uses on National Forest System land: pipeline corridors, powerline corridors, and use of roads.

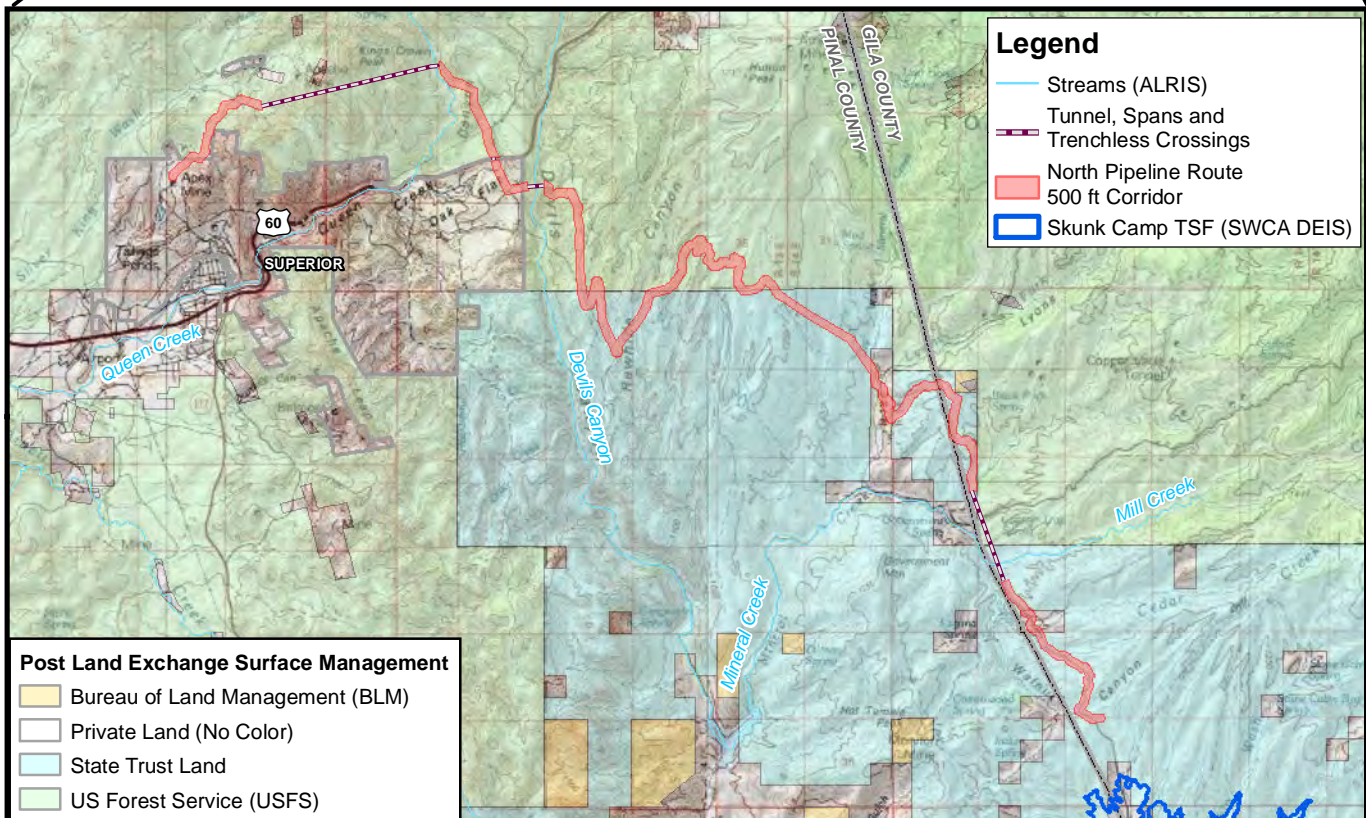


PROJECT
LOCATION

PROJECT VICINITY



Approximate Scale 1 Inch = 10 Miles

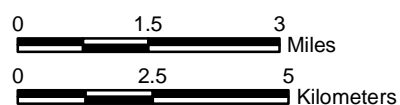


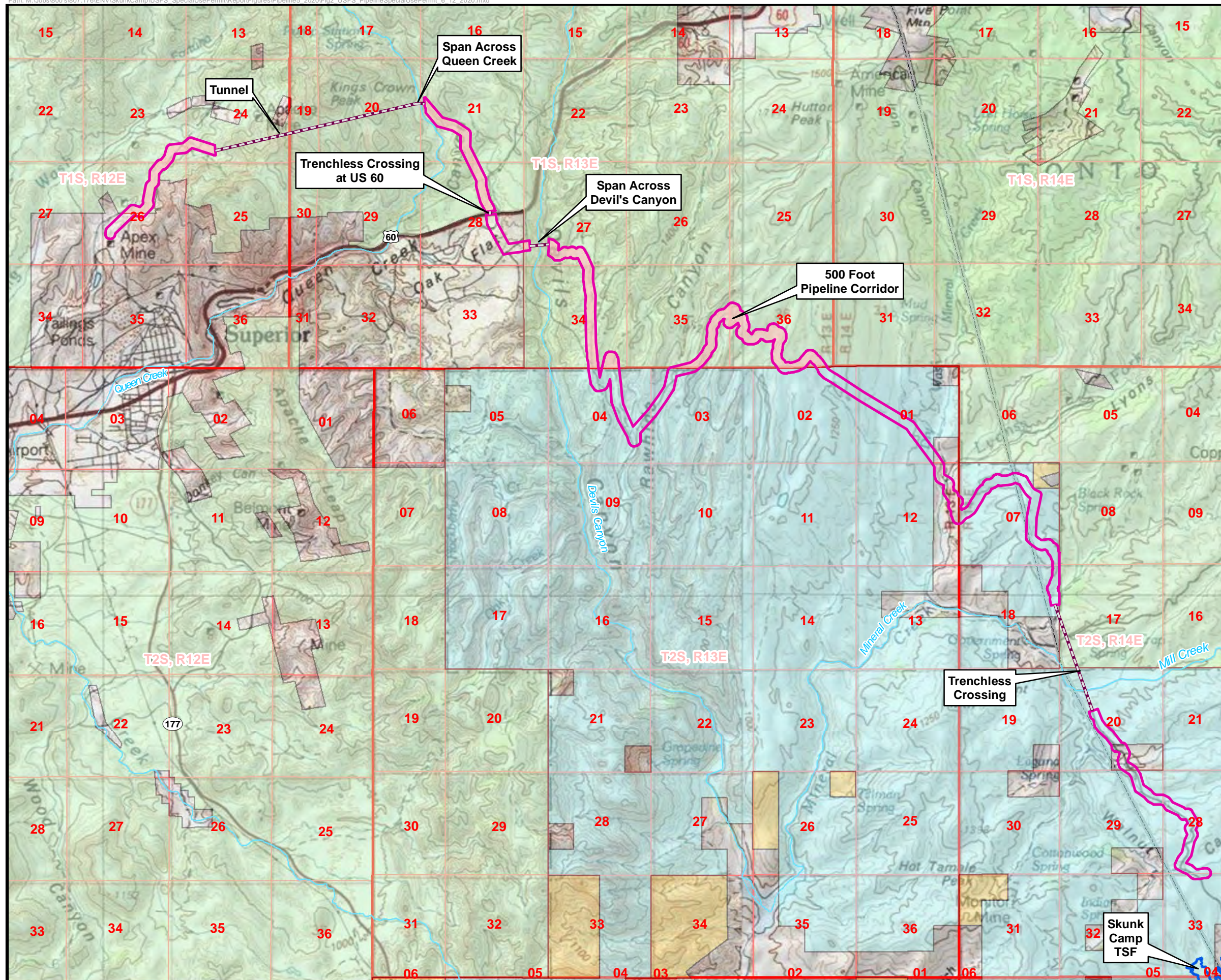
T1S, R12-13E; T2S, R13-14E,
Gila and Pinal Counties, Arizona,
Mesa and Globe 1:100,000 USGS Quadrangles.
Data Sources: SWCA DEIS 2018; Golder Associates, Pipeline Data, May 2020;
BLM Post Land Exchange Surface Management, WRI Modified 2017
Image Source: ArcGIS Online World Street Map

RESOLUTION COPPER USFS Special Use Permit Proposed North Pipeline Corridor










VICINITY MAP
Figure 1

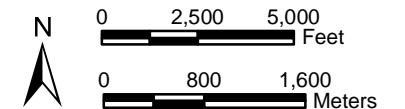
WestLand Resources





Legend

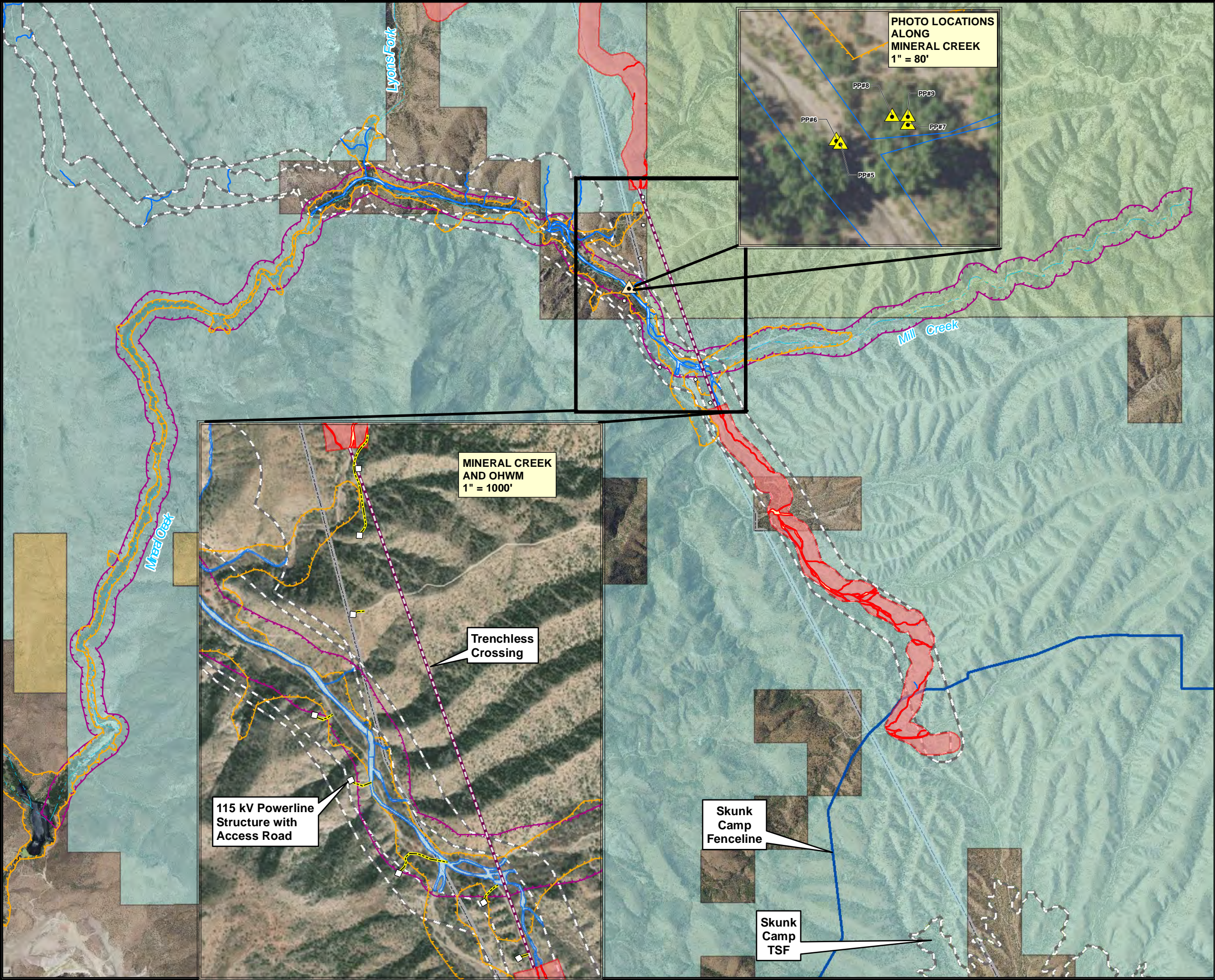
-  Streams (ALRIS)
 -  Tunnel, Spans and Trenchless Crossings
 -  North Pipeline Route on USFS Land (419.4 acres)
 -  North Pipeline Route 500 ft Corridor
 -  Skunk Camp TSF (SWCA DEIS)
- Post Land Exchange Surface Management**
-  Bureau of Land Management (BLM)
 -  Private Land (No Color)
 -  State Trust Land
 -  US Forest Service (USFS)



WestLand Resources

RESOLUTION COPPER
USFS Special Use Permit
Proposed North Pipeline Corridor

PROPOSED NORTH PIPELINE
FROM WEST PLANT SITE TO SKUNK CAMP
Figure 2

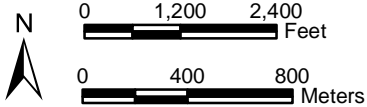


Pinal and Gila Counties, Arizona
Globe and Mesa 1:100,000 USGS Quadrangles
Data Sources: Post Land Exchange Surface Management, BLM, WRI Modified 2017, SWCA DEIS 8-20-2018, SRP Powerline Data, 6-2020, Golder Associates, 5-2020, and USFWS Critical Habitat. Image Source: ArcGIS Online World Imagery, 2-6-2018

Legend

- 115 kV Power Structure
- ▲ Potential Wetland Survey Photo Point
- Streams (ALRIS)
- Skunk Camp Tunnel, Spans and Trenchless Crossings
- Skunk Camp Revised North Pipeline OHWM
- Skunk Camp North Pipeline DEIS OHWM
- North Pipeline Route 500 ft Corridor
- Skunk Camp Fenceline
- Skunk Camp Pipeline-Powerline Corridors (DEIS)
- USFWS Critical Habitat**
 - Gila Chub Designated 2005-11-02
 - Yellow-billed Cuckoo Proposed 2020-02-27
- Post Land Exchange Surface Management**
 - Bureau of Land Management (BLM)
 - Private Land (No Color)
 - State Trust Land (ASLD)
 - US Forest Service (USFS)

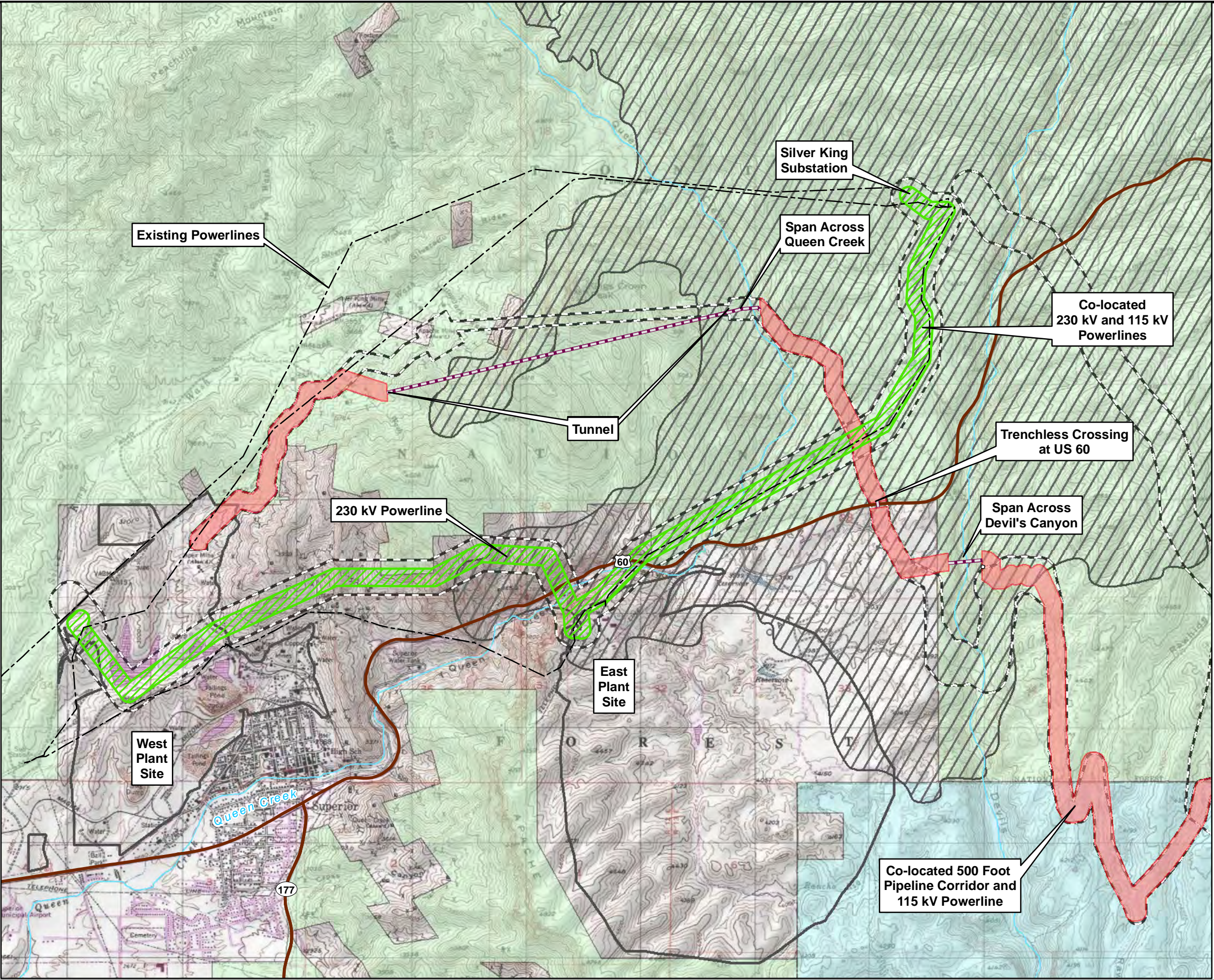
Note: Within the 500 Foot Corridor for the North Pipeline Route, only 200 feet will actually be disturbed.



WestLand Resources

RESOLUTION COPPER
Skunk Camp Comparison Memo

USFWS CRITICAL HABITAT
AND MINERAL CREEK CROSSING
Figure 2

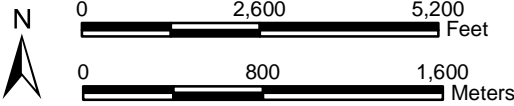


Pinal and Gila Counties, Arizona
Globe and Mesa 1:100,000 USGS Quadrangles
Data Sources: Post Land Exchange Surface Management,
BLM, WRI Modified 2017, SWCA DEIS 8-20-2018,
SRP Powerline Data, 6-2020, and
Golder Associates, 5-2020

Legend

- Existing Powerlines
- Skunk Camp Tunnel, Spans and Trenchless Crossings
- 230 kV Powerline 500 ft Corridor
- North Pipeline Route 500 ft Corridor
- Skunk Camp Pipeline-Powerline Corridors (DEIS)
- AHC Predicted Habitat (Baker 2013)
- Post Land Exchange Surface Management**
- Private Land (No Color)
- State Trust Land (ASLD)
- US Forest Service (USFS)

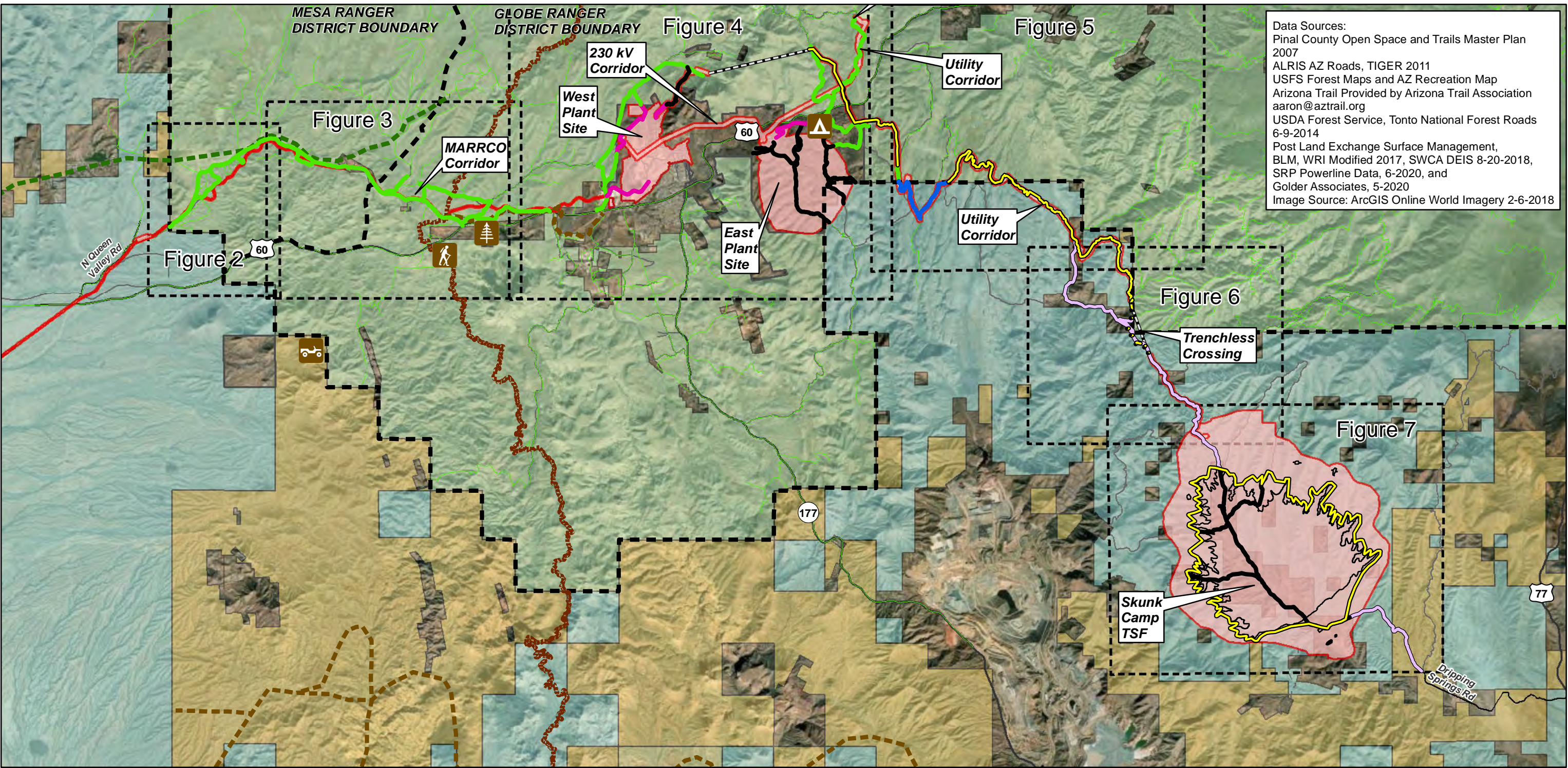
Note: Within the 500 Foot Corridor for the North Pipeline Route, only 200 feet will actually be disturbed.



WestLand Resources

**RESOLUTION COPPER
Skunk Camp Comparison Memo**

ARIZONA HEDGEHOG CACTUS PREDICTED HABITAT
Figure 3



Data Sources:
Pinal County Open Space and Trails Master Plan 2007
ALRIS AZ Roads, TIGER 2011
USFS Forest Maps and AZ Recreation Map
Arizona Trail Provided by Arizona Trail Association aaron@aztrail.org
USDA Forest Service, Tonto National Forest Roads 6-9-2014
Post Land Exchange Surface Management, BLM, WRI Modified 2017, SWCA DEIS 8-20-2018, SRP Powerline Data, 6-2020, and Golder Associates, 5-2020
Image Source: ArcGIS Online World Imagery 2-6-2018

Legend

Offroad

Arboretum

Campground

Trailhead

Proposed New Road

Existing Road To Be Decommissioned-Restricted from Public Access

Existing State Land Road - Public Access To Be Maintained

Existing County Road - Public Access To Be Maintained

Existing Forest Road - Public Access To Be Maintained

Private Road

Trail

Proposed Drainage Trail

Arizona National Scenic Trail Polyline

TNF Ranger District Boundary

115 kV Power Structure

Skunk Camp Tunnel, Spans and Trenchless Crossings

Preferred Alternative

Skunk Camp Seepage Dam

Sheet Index

TNF Roads

US Highways

Highways

Arterials

Streets

Primitive Roads

Post Land Exchange Resolution Holdings

Post Land Exchange Surface Management

Bureau of Land Management (BLM)

Bureau of Reclamation

Private Land (No Color)

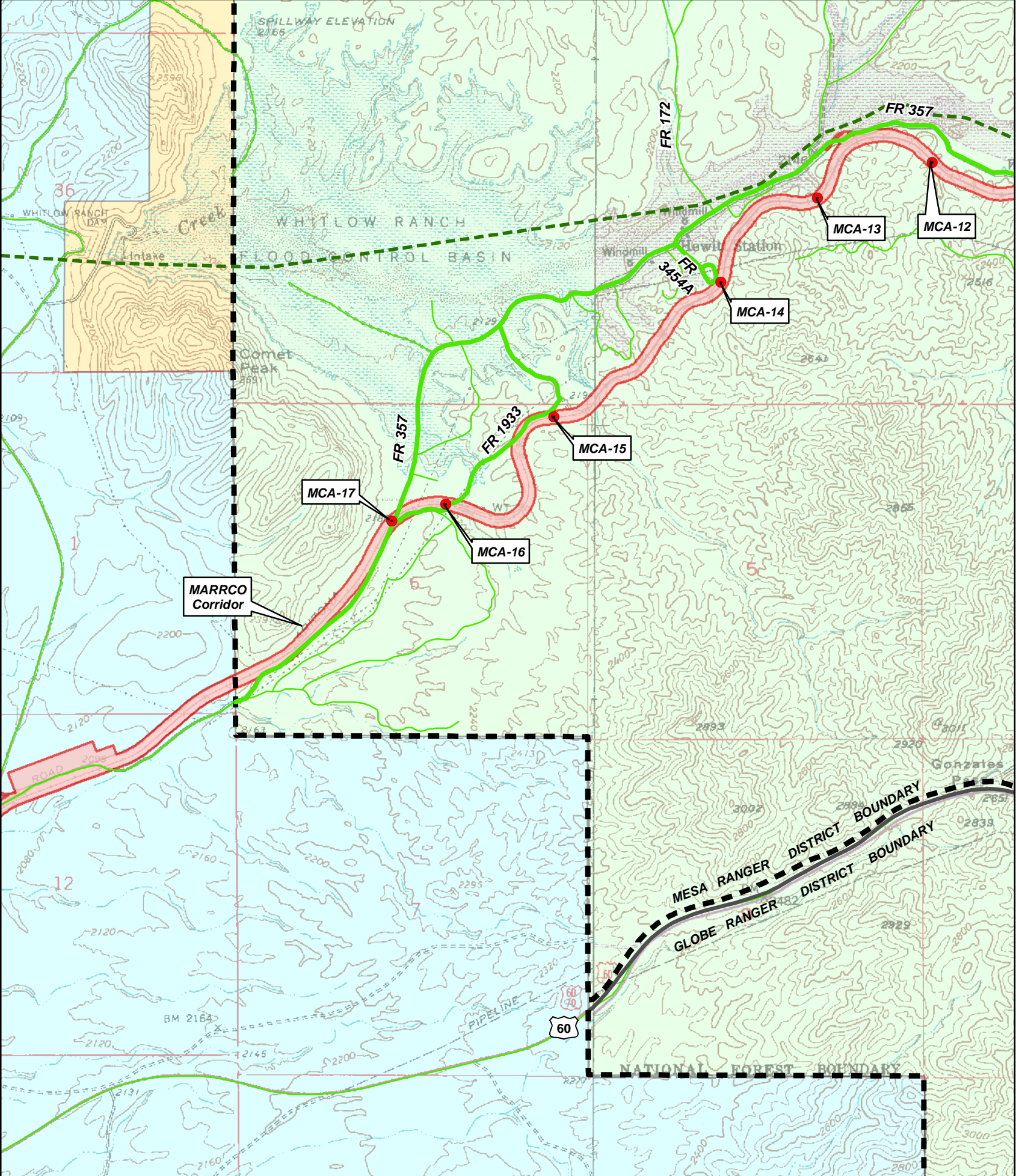
State Trust Land

National Forest System

05,00010,000
Feet

RESOLUTION COPPER
General Plan of Operations

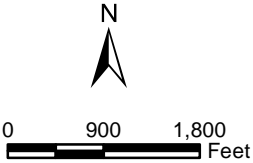
ROAD USE PLAN
OVERVIEW
Figure 1



Legend

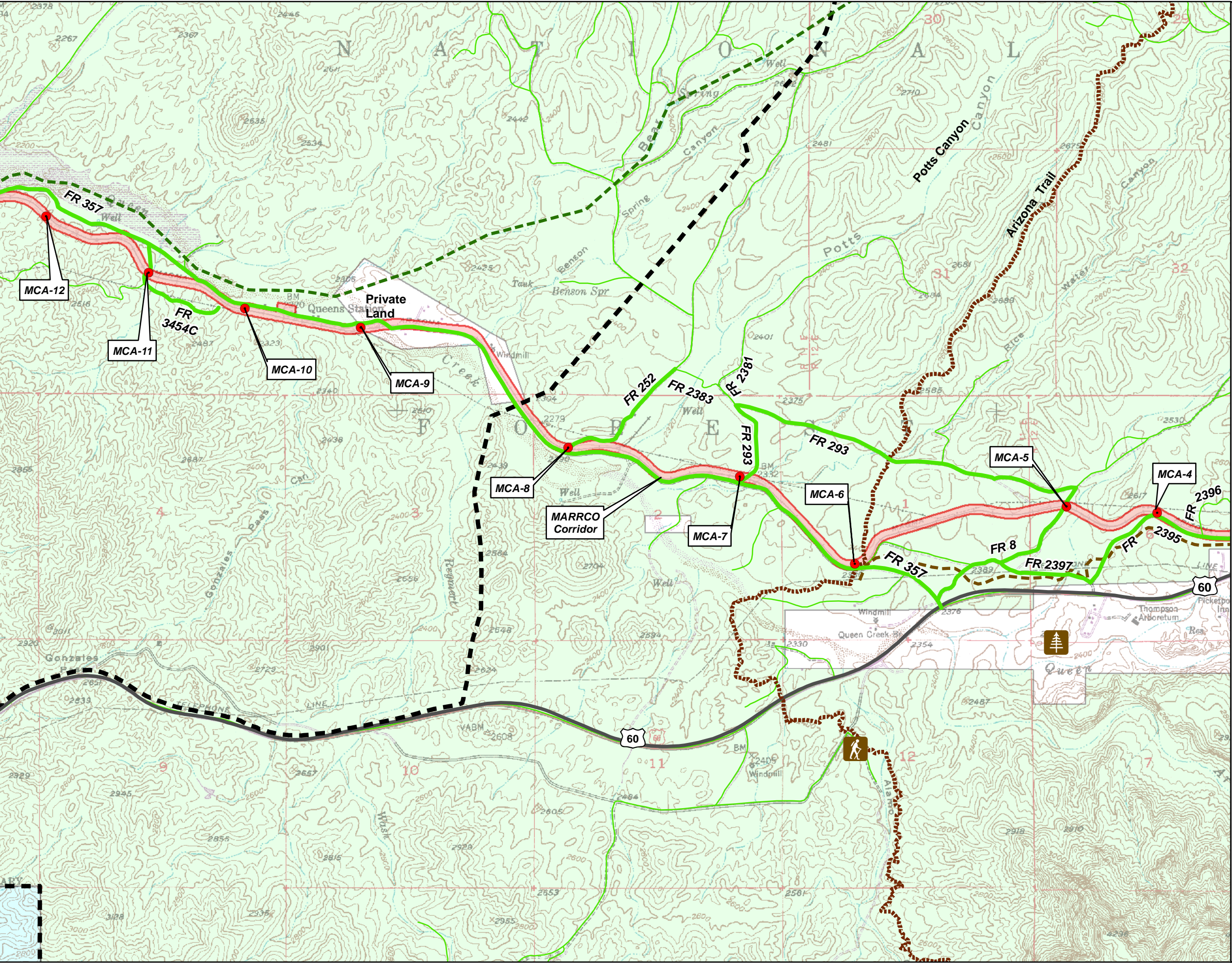
- MARRCO Corridor Access Point (MCA)
- Existing Forest Road - Public Access To Be Maintained
- Proposed Drainage Trail
- TNF Ranger District Boundary
- TNF Roads
- Preferred Alternative
- Post Land Exchange Surface Management
- Bureau of Land Management (BLM)
- Private Land (No Color)
- State Trust Land
- National Forest System

Data Sources:
Pinal County Open Space and Trails Master Plan 2007
USDA Forest Service, Tonto National Forest Roads 6-9-2014
SWCA DEIS 8-20-2018
Post Land Exchange Surface Management, BLM, WRI Modified 2017
Image Source: Florence Junction & Picketpost Mountain USGS 7.5 Minute Quadrangles



RESOLUTION COPPER
General Plan of Operations

MARRCO
Figure 2



Legend

MARRCO Corridor Access Point (MCA)

Arboretum

Trailhead

Existing Forest Road - Public Access To Be Maintained

TNF Roads

Lost Trail

Proposed Drainage Trail

Arizona National Scenic Trail Polyline

TNF Ranger District Boundary

Preferred Alternative

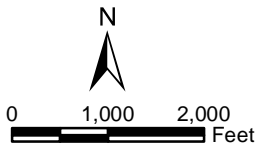
Post Land Exchange Surface Management

Private Land (No Color)

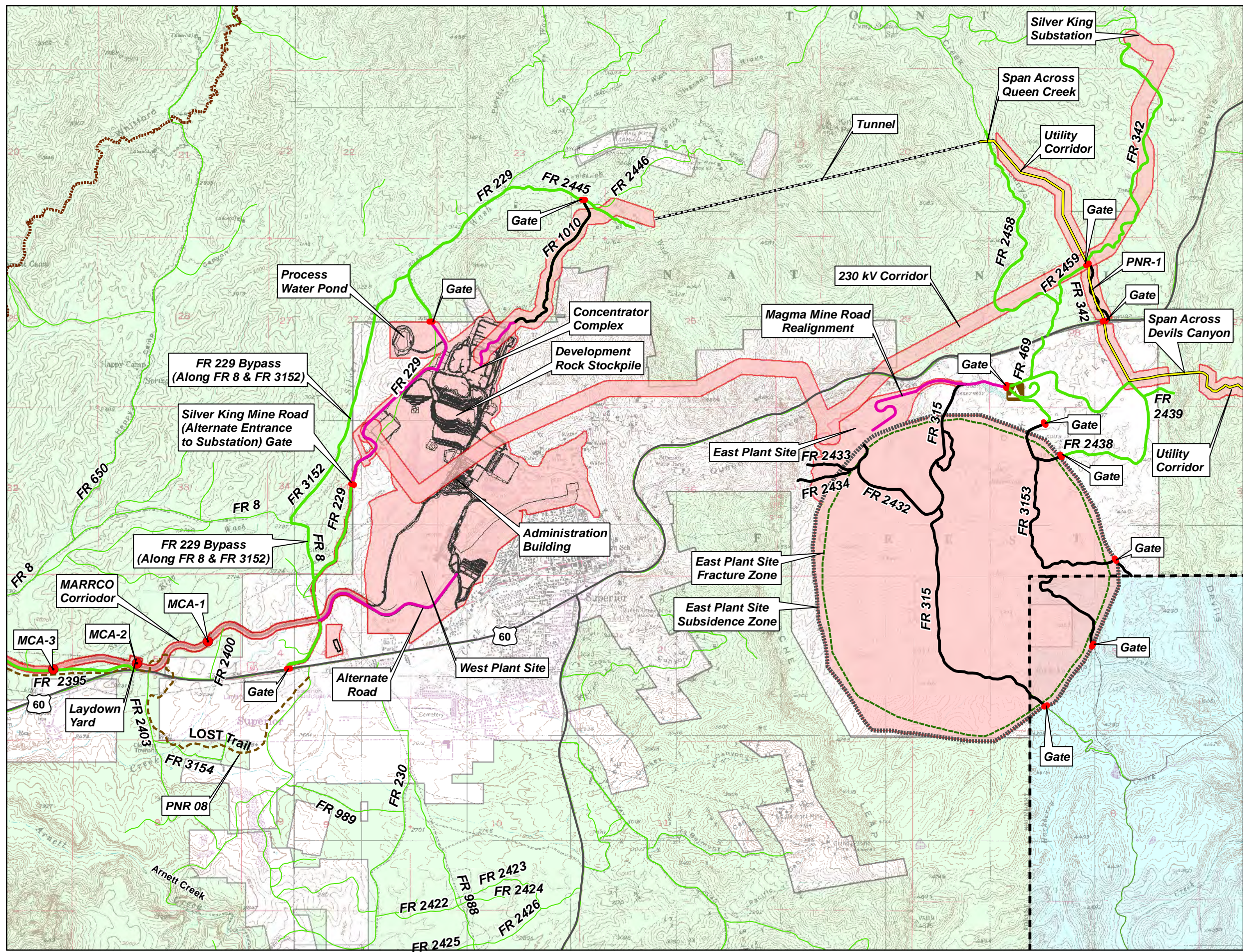
State Trust Land

National Forest System

Data Sources:
Pinal County Open Space and Trails Master Plan 2007
USFS Forest Maps and AZ Recreation Map
Arizona Trail Provided by Arizona Trail Association
aaron@aztrail.org
USDA Forest Service, Tonto National Forest Roads 6-9-2014
SWCA DEIS 8-20-2018
Post Land Exchange Surface Management, BLM, WRI Modified 2017
Image Source: Picketpost Mountain
USGS 7.5 Minute Quadrangles



RESOLUTION COPPER
General Plan of Operations
MARRCO TO WEST PLANT SITE
Figure 3

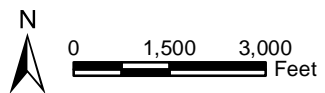


Legend

- Gate
- MARRCO Corridor Access Point
- Campground
- Private Road
- Proposed New Road
- Existing Road To Be Decommissioned - Restricted from Public Access
- Existing Forest Road - Public Access To Be Maintained
- Lost Trail
- Arizona National Scenic Trail Polyline
- TNF Ranger District Boundary
- TNF Roads
- Subsidence Zone
- Fracture Zone
- Skunk Camp Tunnel, Spans and Trenchless Crossings
- Preferred Alternative
- Post Land Exchange Surface Management
- Private Land (No Color)
- State Trust Land
- National Forest System

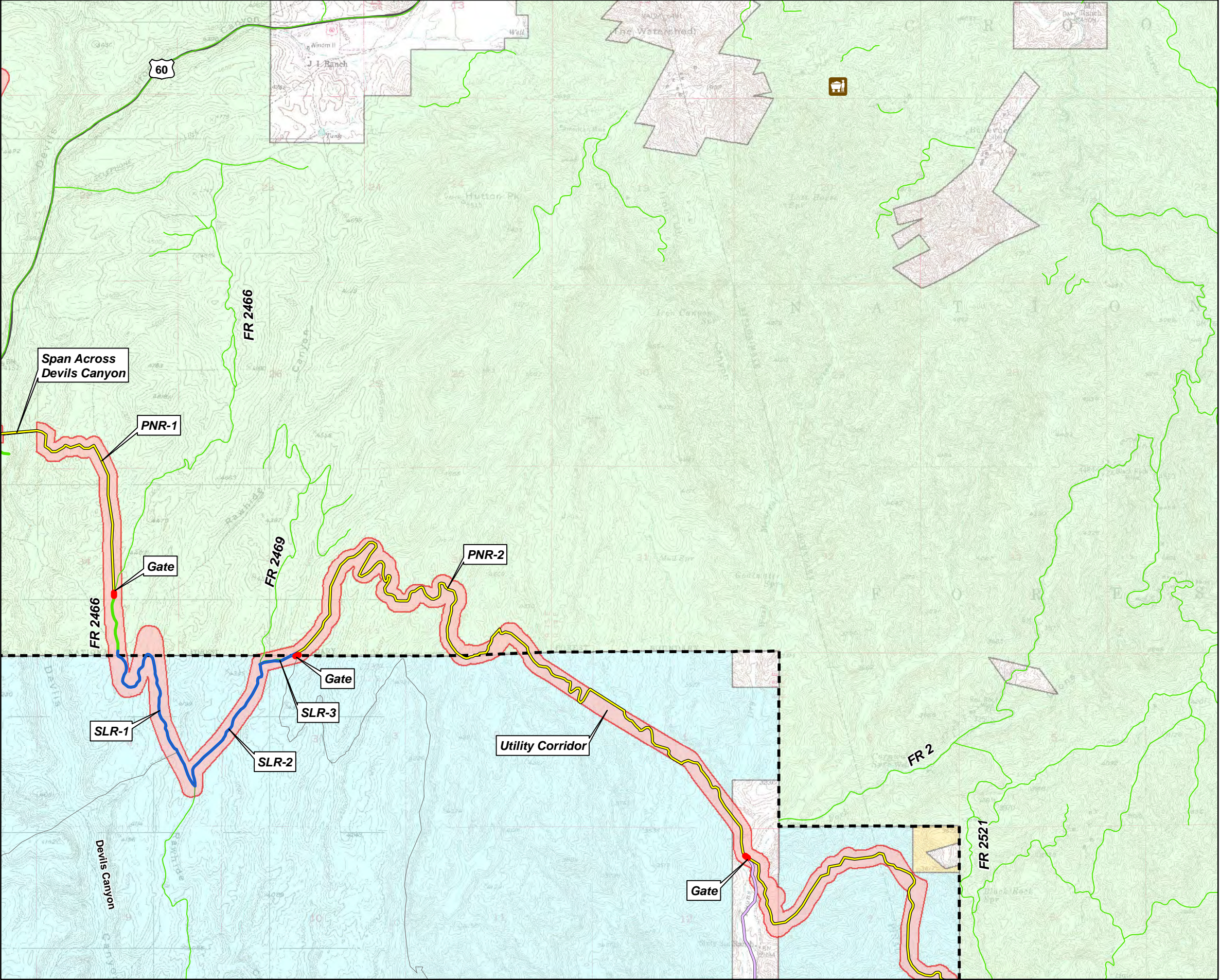
Note: Project area around disturbance area defined by modeled zone of continuous subsidence.

Data Sources:
Pinal County Open Space and Trails Master Plan, 2007
ALRIS AZ Roads, TIGER 2011
USFS Forest Maps and AZ Recreation Map
Arizona Trail Provided by Arizona Trail Association
aaron@aztrail.org
SWCA DEIS 8-20-2018
Subsidence and Fracture Zone 2017
West Plant Facilities
Provided by M3 Engineering, July 6, 2020
USDA Forest Service, Tonto National Forest Roads
6-9-2014
Post Land Exchange Surface Management,
BLM, WRI Modified 2017,
SRP Powerline Data, 6-2020, and
Golder Associates, 5-2020
Image Source: Picketpost Mountain & Superior
USGS 7.5 Minute Quadrangles



RESOLUTION COPPER General Plan of Operations

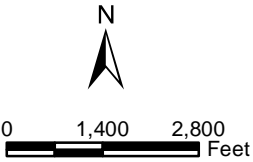
WEST AND EAST PLANT SITES
Figure 4



Legend

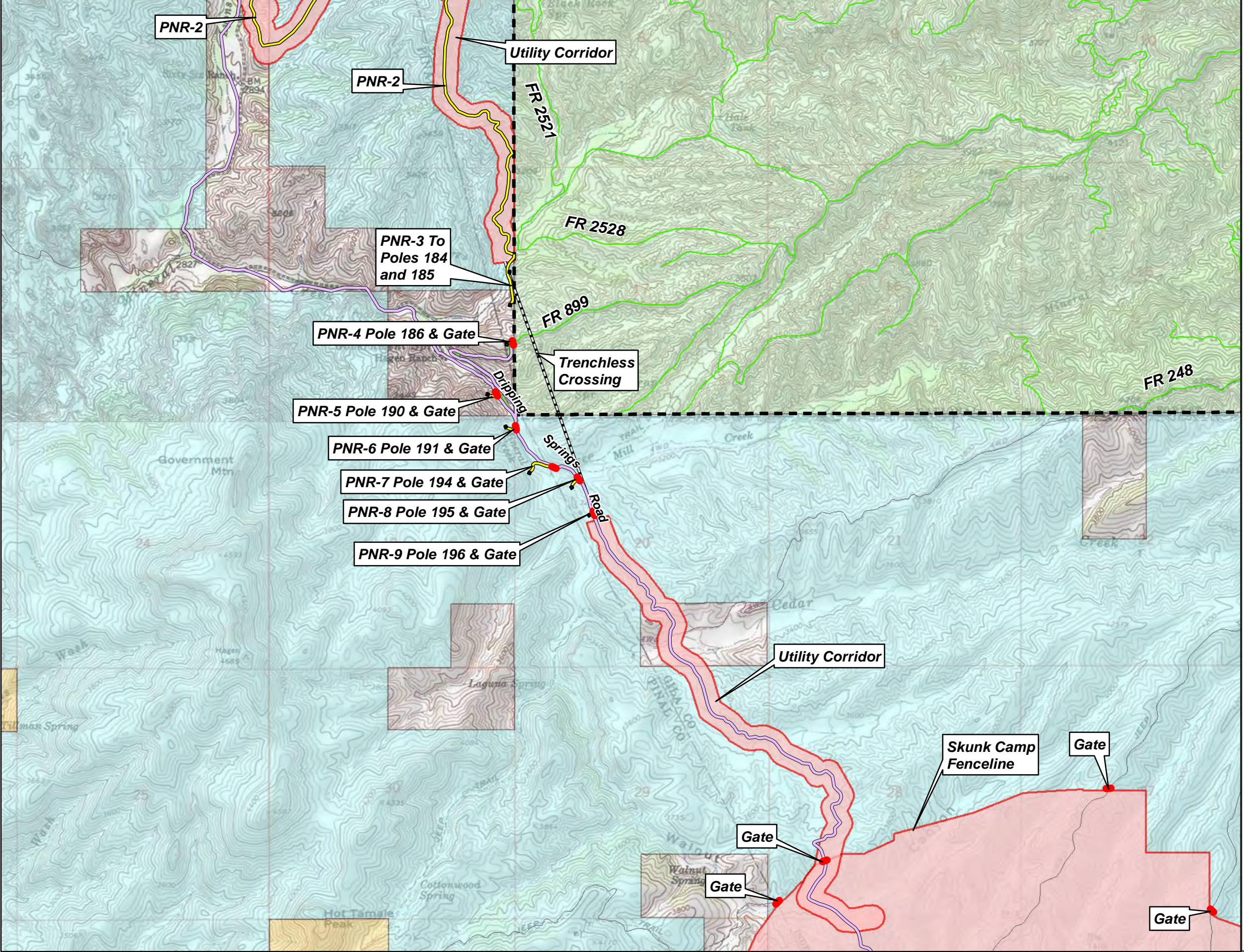
- Gate
- Mine
- Proposed New Road
- Existing State Land Road - Public Access To Be Maintained
- Existing County Road - Public Access To Be Maintained
- Existing Forest Road - Public Access To Be Maintained
- TNF Ranger District Boundary
- TNF Roads
- Skunk Camp Tunnel, Spans and Trenchless Crossings
- Preferred Alternative
- Post Land Exchange Surface Management
 - Bureau of Land Management (BLM)
 - Private Land (No Color)
 - State Trust Land
 - National Forest System

Data Sources:
ALRIS AZ Roads, TIGER 2011
USDA Forest Service, Tonto National Forest Roads 6-9-2014
Post Land Exchange Surface Management, BLM, WRI Modified 2017, SRP Powerline Data, 6-2020, and Golder Associates, 5-2020
Image Source: Superior and Pinal Ranch USGS 7.5 Minute Quadrangles



RESOLUTION COPPER
General Plan of Operations

UTILITY CORRIDOR
Figure 5



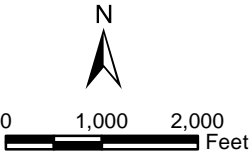
Legend

- Gate
- 115 kV Power Structure
- Proposed New Road
- Existing County Road - Public Access To Be Maintained
- TNF Ranger District Boundary
- TNF Roads
- Skunk Camp Tunnel, Spans and Trenchless Crossings
- Preferred Alternative

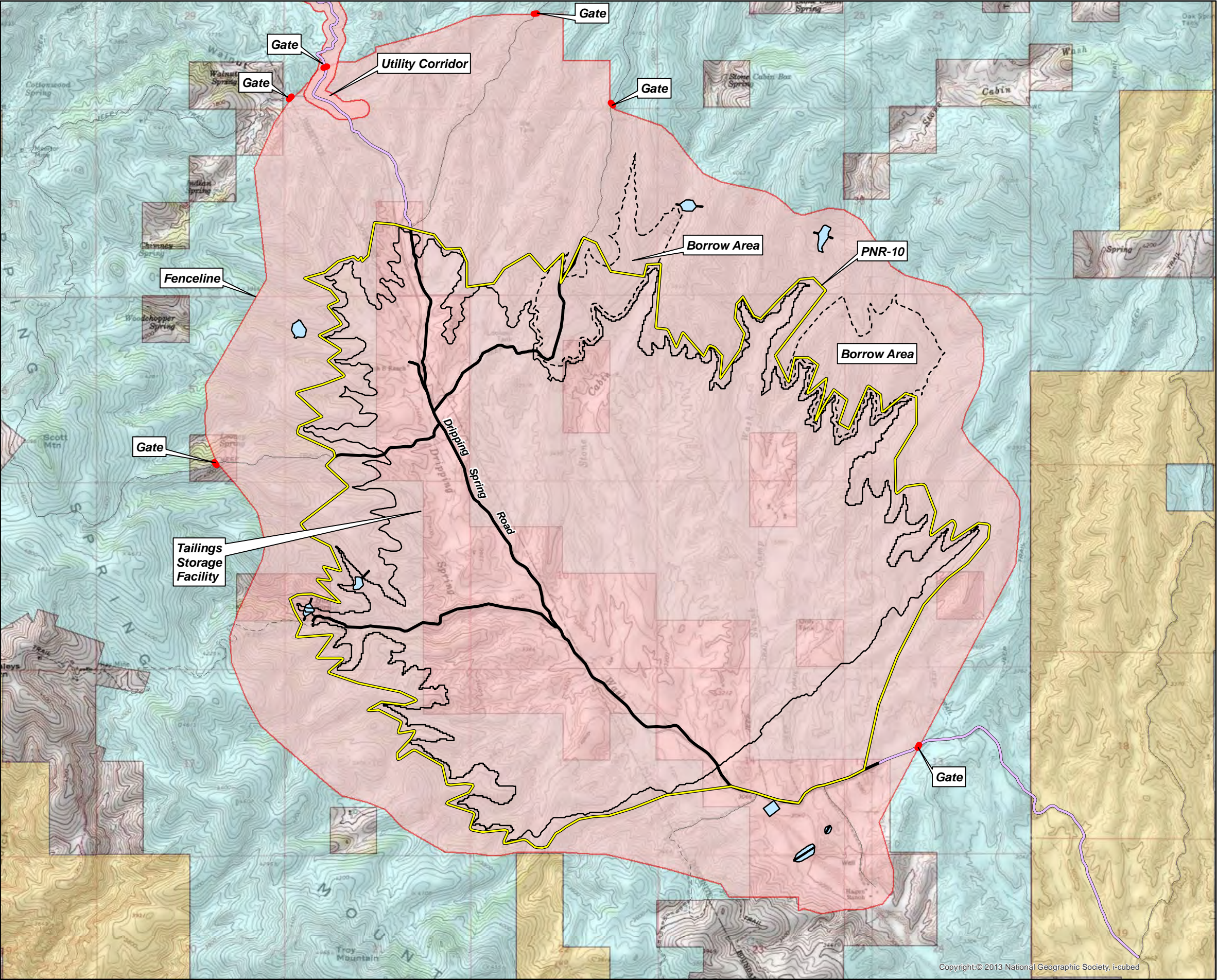
Post Land Exchange Surface Management

- Bureau of Land Management (BLM)
- Private Land (No Color)
- State Trust Land
- National Forest System

Data Sources:
ALRIS AZ Roads, TIGER 2011
USDA Forest Service, Tonto National Forest Roads 6-9-2014
Post Land Exchange Surface Management, BLM, WRI Modified 2017, SRP Powerline Data, 6-2020, and Golder Associates, 5-2020
Image Source: Pinal Ranch & Hot Tamale Peak USGS 7.5 Minute Quadrangles



RESOLUTION COPPER
General Plan of Operations
UTILITY CORRIDOR
NORTH OF TSF
Figure 6



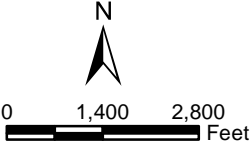
Legend

- Gate
- Proposed New Road
- Existing Road To Be Decommissioned-Restricted from Public Access
- Existing County Road - Public Access To Be Maintained
- Skunk Camp TSF
- Skunk Camp Diversion Dikes and Seepage Dams
- TSF Borrow Areas
- Preferred Alternative

Post Land Exchange Surface Management

- Bureau of Land Management (BLM)
- Private Land (No Color)
- State Trust Land

Data Sources:
ALRIS AZ Roads, TIGER 2011
Post Land Exchange Surface Management, BLM, WRI Modified 2017, SWCA DEIS 8-20-2018, SRP Powerline Data, 6-2020, and Golder Associates, 5-2020
Image Source: Hot Tamale Peak and El Capitan Mountain USGS 7.5 Minute Quadrangles



RESOLUTION COPPER
General Plan of Operations

SKUNK CAMP TSF
Figure 7