



United States Department of Agriculture
Tonto National Forest

Resolution Copper Project and Land Exchange Environmental Impact Statement

Welcome

to the Resolution Copper Project and Land Exchange
Environmental Impact Statement scoping meeting

Please Sign In Here

MEETING AGENDA

- 5:00 – 5:30 Sign-in and Orientation
- 5:30 – 6:00 Forest Service Presentation
- 6:00 – 6:45 Question & Answer
- 6:45 – 8:00 Open House



United States Department of Agriculture
Tonto National Forest

Resolution Copper Project and Land Exchange Environmental Impact Statement

Project Overview

The Environmental Impact Statement (EIS) will disclose effects and analyze two components:

Mining Proposal

Resolution Copper Mining (LLC) has proposed construction of a large scale mine on a mixture of Forest Service, private, and state lands. In November 2013, Resolution requested Forest Service approval to conduct mining operations on Forest Service land.

The Tonto National Forest is required to respond to Resolution's proposal.

Land Exchange

In December 2014, Congress directed the Forest Service to exchange 2,422 acres of public land (known as the Oak Flat parcel) with Resolution in return for 5,344 acres of private land in Arizona.



PROPOSED LARGE SCALE MINE

- Expected to mine over 50 billion pounds of copper from a deposit located 5,000 to 7,000 feet underground.
- Ore would be removed using an underground mining technique known as panel caving, which would create subsidence of the land surface at the Oak Flat parcel.
- Expected to take 10 years to construct, have a 40-year operational life, followed by 5-10 years of reclamation.
- Mining would take place on lands that would become private after the land exchange is complete.
- Disposal of tailings (pulverized rock left over after ore processing) and construction of other mine facilities are proposed for National Forest lands.



United States Department of Agriculture
Tonto National Forest

Resolution Copper Project and Land Exchange Environmental Impact Statement

National Environmental Policy Act of 1969 (NEPA)

NEPA requires federal agencies to assess how proposed actions may impact the environment. Using the NEPA process, agencies evaluate the **environmental and related social and economic impacts** of their proposed actions.

What is an EIS?

An Environmental Impact Statement (EIS) is a document, prepared in accordance with NEPA, that discloses environmental impacts of a proposed action.

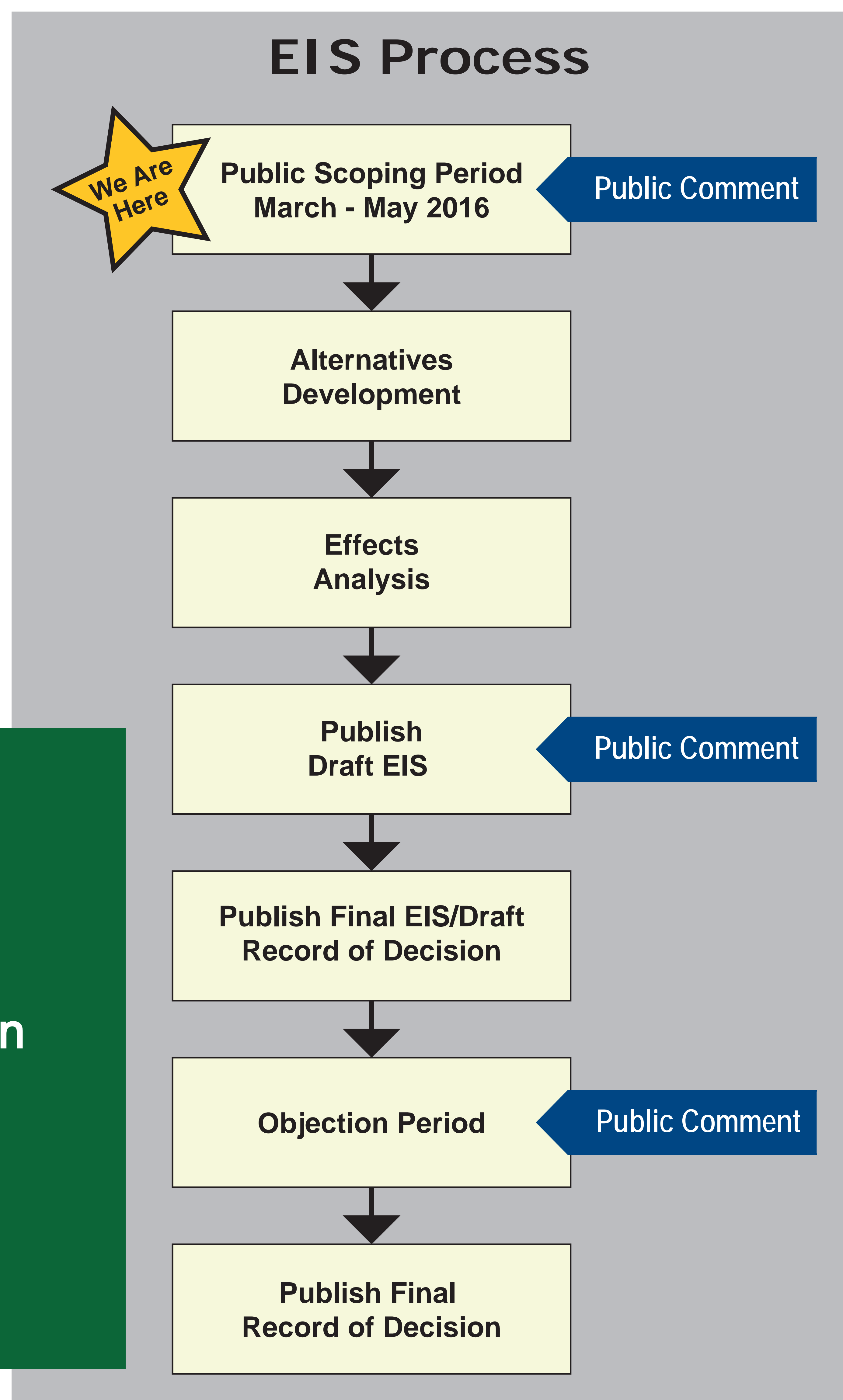
The Tonto National Forest is preparing an EIS to evaluate the Resolution Copper Project and Land Exchange.

What is Scoping?

Public scoping is the beginning of the EIS process. We are here to answer questions about the project and solicit public comments. Please provide specific comments, information that could be pertinent to analysis of environmental effects, or suggestions for potential alternatives.

Public involvement is a fundamental part of NEPA and development of an EIS. Public input helps federal agencies make well-informed decisions on proposed actions.

The Tonto National Forest will work to engage the public throughout the EIS process.

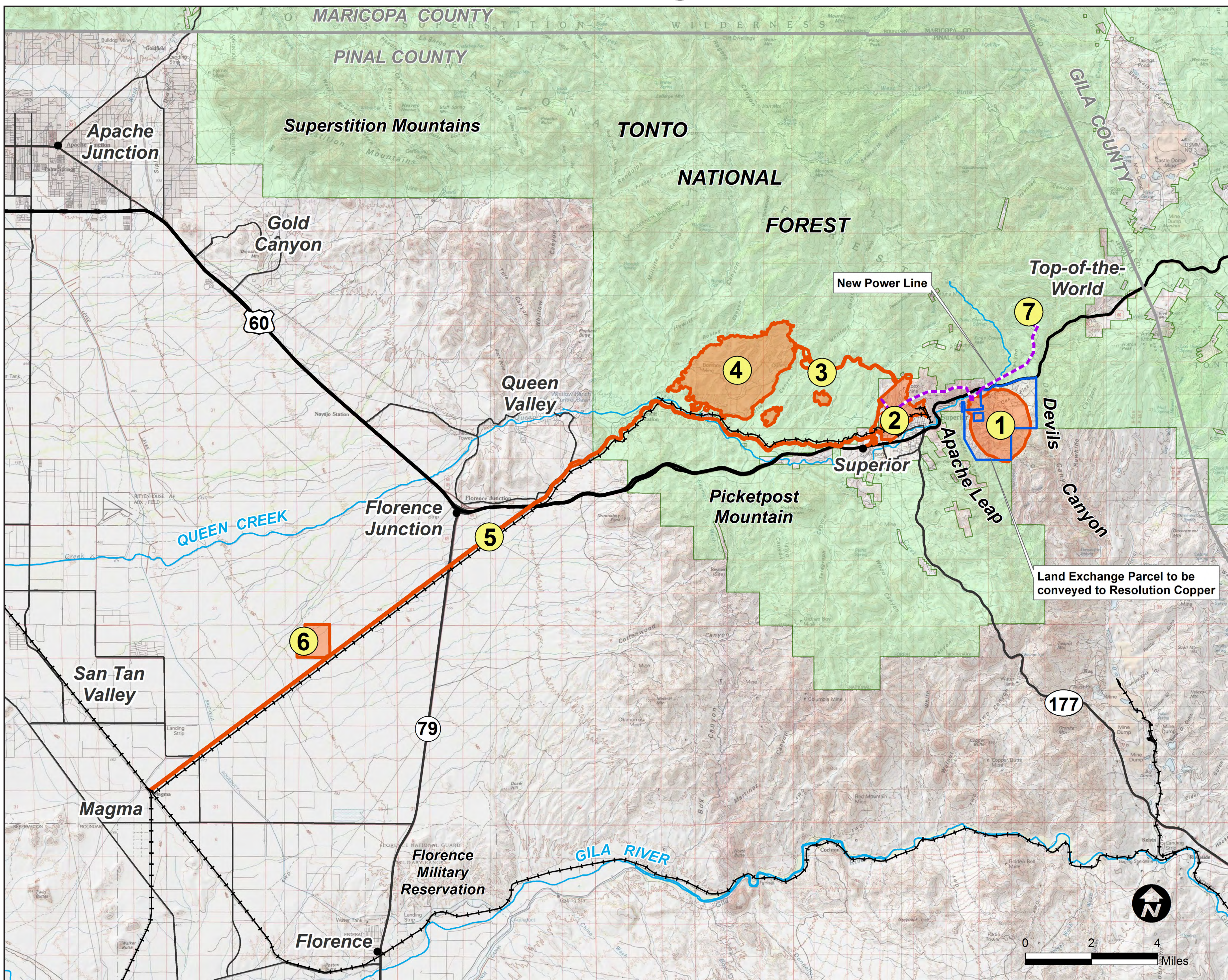




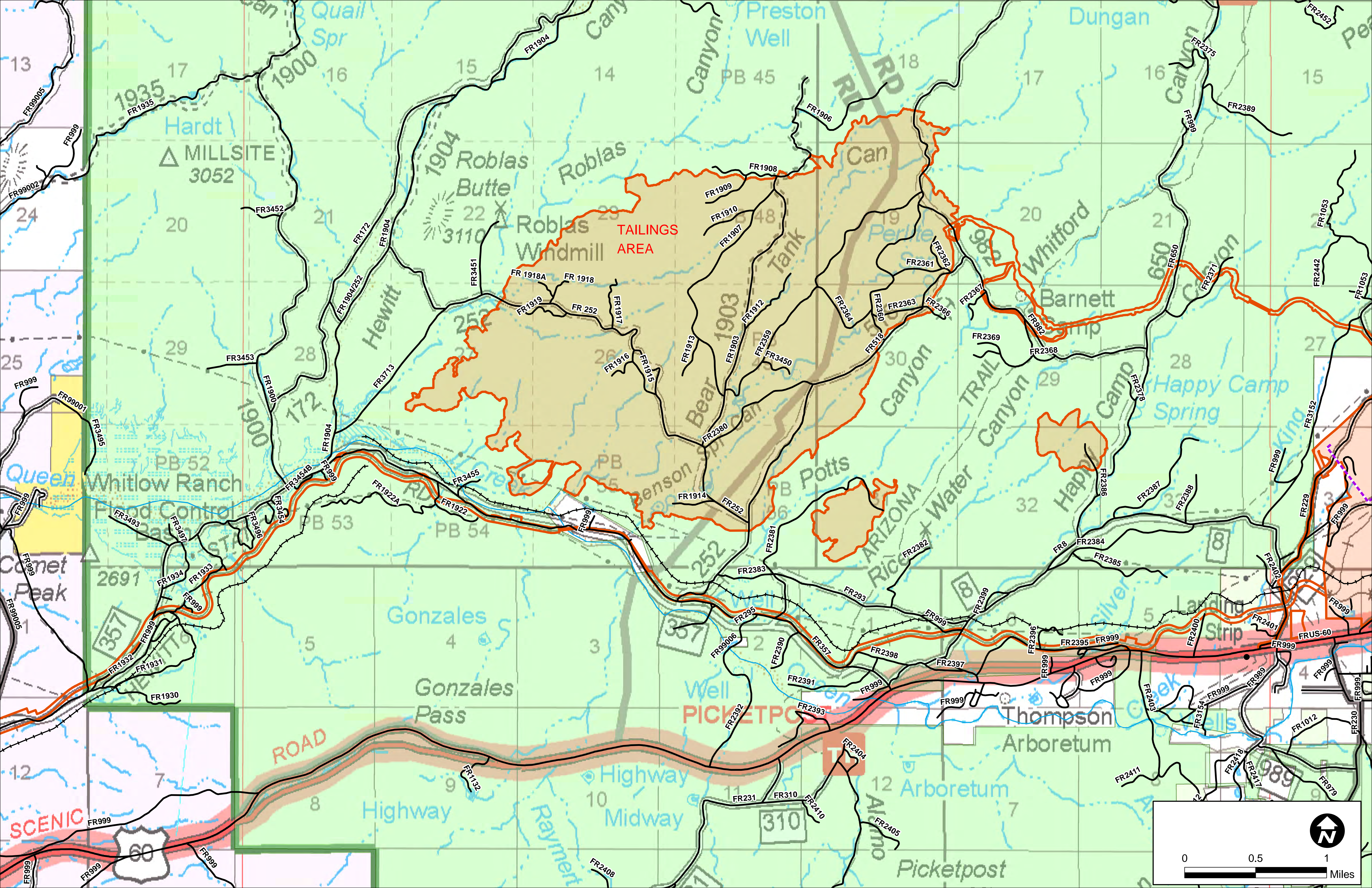
United States Department of Agriculture
Tonto National Forest

Resolution Copper Project and Land Exchange Environmental Impact Statement

Proposed Mining Operations



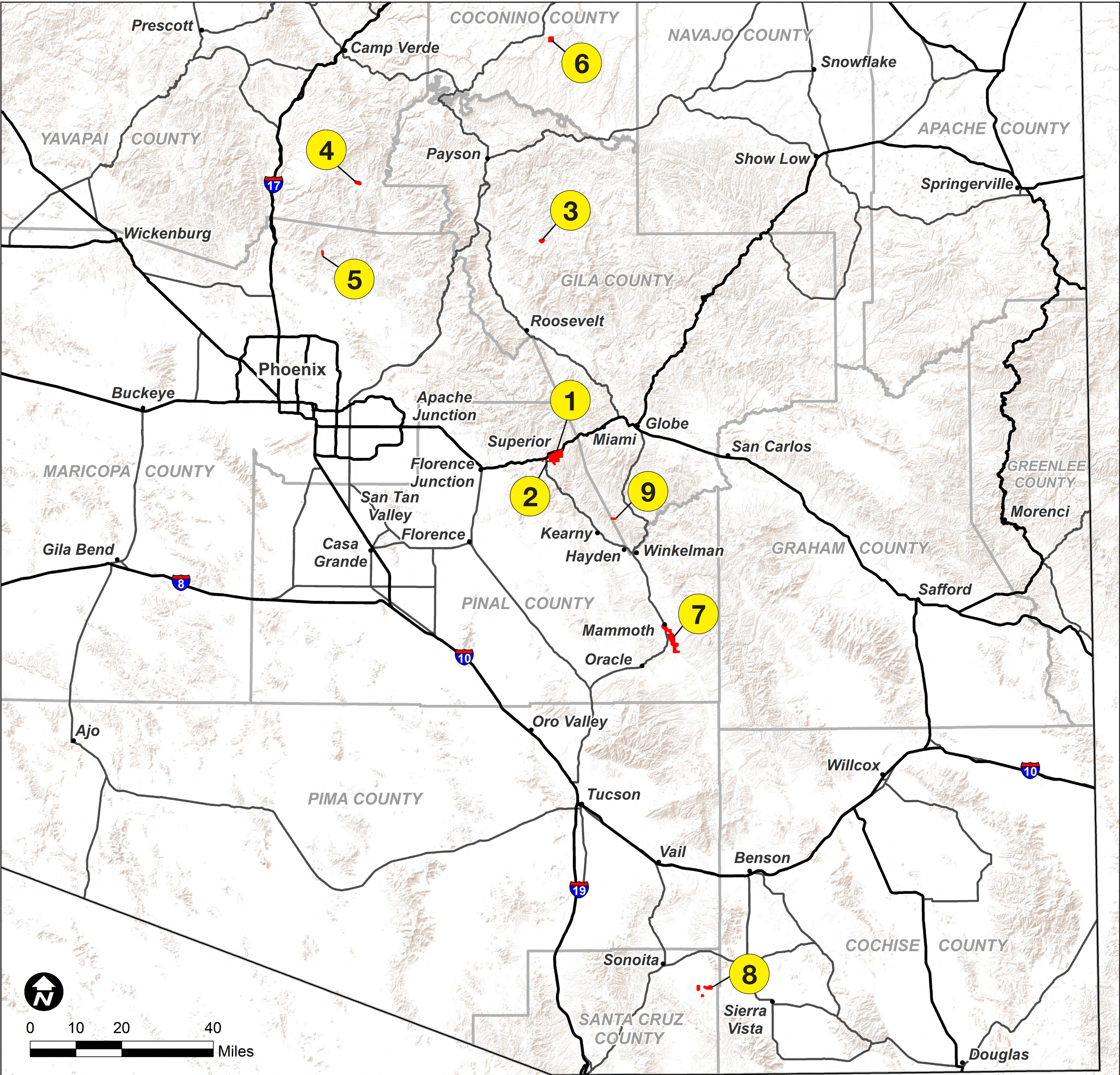
- 1 Removal of ore at underground mine and East Plant Site. Initial access provided by existing roads. Magma Mine Road would eventually be relocated due to expected subsidence.
- 2 Crushed ore delivered underground to West Plant Site and processed using flotation.
- 3 A pipeline would be used to pump tailings 4.7 miles to the tailings facility.
- 4 Tailings facility would eventually occupy about 4,400 acres of Forest Service land.
Copper concentrate would be pumped as a slurry about 22 miles to a filter/loadout facility. The slurry pipelines would lie along existing right-of-way known as the Magma Arizona Railroad Company (MARRCO) corridor.
- 5 The MARRCO corridor would also include: an upgraded rail line, new water pipelines, new utility lines, several intermediate pump stations, and an estimated 30 new groundwater recovery wells.
- 6 From filter/loadout facility, copper concentrate would be sent to market using rail or trucks. Molybdenum concentrate trucked to market directly from the West Plant Site.
- 7 Power to the project would be supplied by Salt River Project. New 230-kV power lines would be located along new and existing rights-of-way.





Resolution Copper Project and Land Exchange
Environmental Impact Statement

Land Exchange



Transfer From Federal Government to Resolution Copper

- 1** Oak Flat (2,422 Acres)

Transfer From Resolution Copper to Forest Service

- 2** Apache Leap South End (110 Acres)
3 Turkey Creek (147 Acres)
4 Tangle Creek (148 Acres)
5 Cave Creek (149 Acres)
6 East Clear Creek (640 Acres)

Transfer From Resolution Copper to Bureau of Land Management

- 7** Lower San Pedro River (3,050 Acres)
8 Appleton Ranch (940 Acres)
9 Dripping Springs (160 Acres)

Resolution Copper Project and Land Exchange Environmental Impact Statement

Land Exchange Overview

Transfer from federal government to Resolution Copper Mining, LLC

1 Oak Flat Parcel: 2,422 acres



Oak Flat Parcel



Oak Flat Parcel



Oak Flat Campground

Transfer from Resolution Copper Mining, LLC to Bureau of Land Management

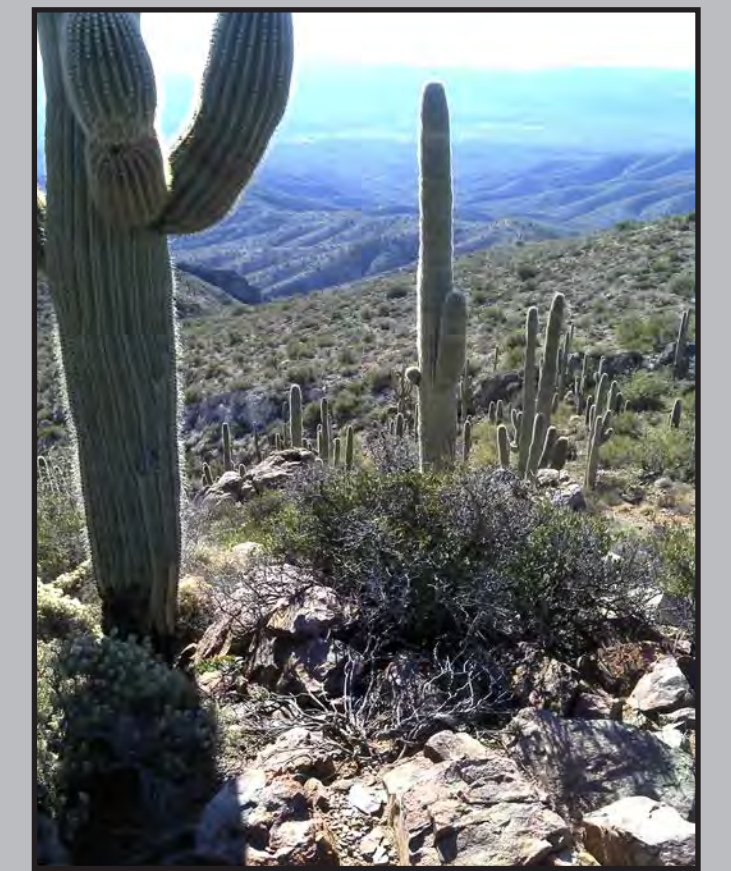
7 Lower San Pedro River 3,050 acres



8 Appleton Ranch 940 acres



9 Dripping Springs 160 acres

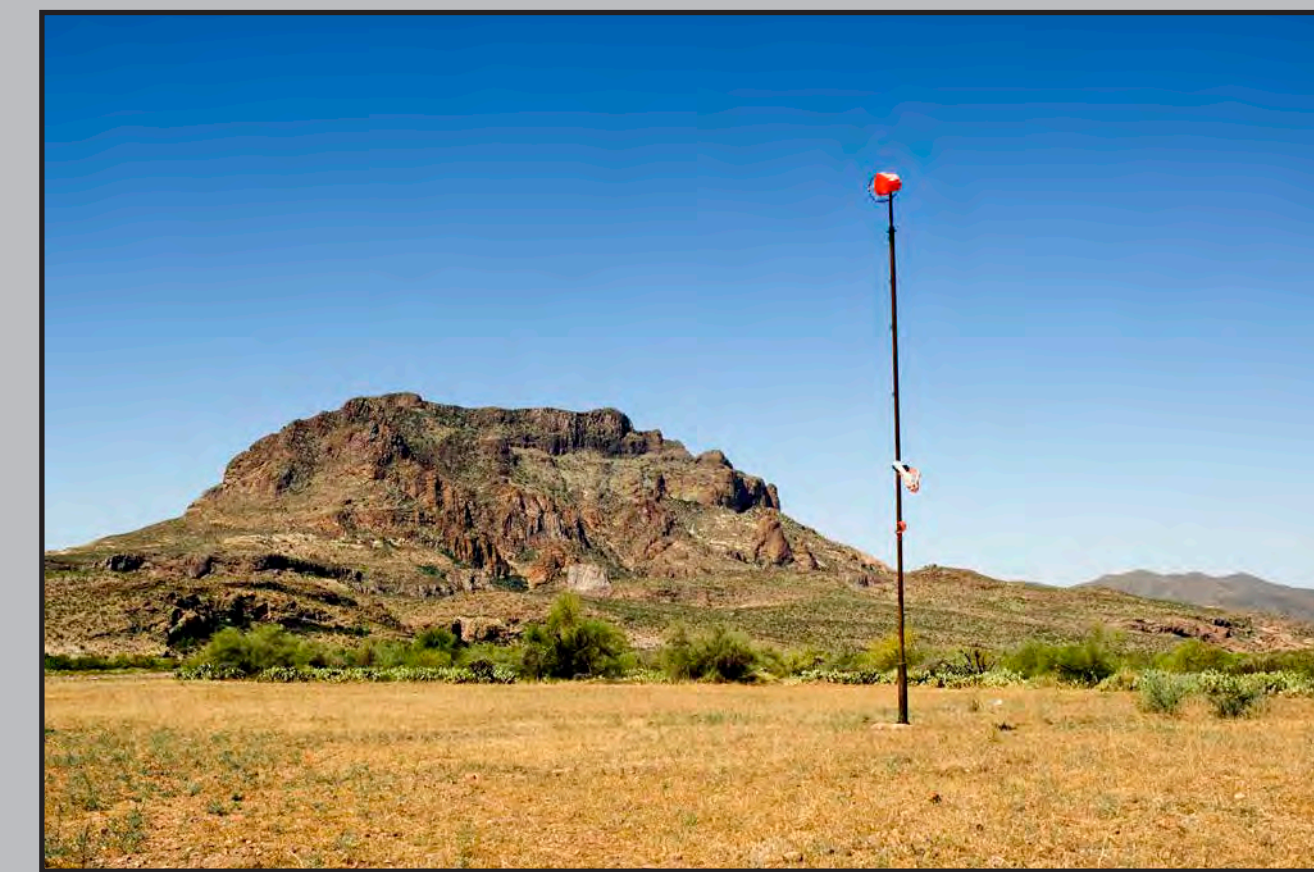


Transfer from United States to Town of Superior (if requested)

Fairview Cemetery 30 acres



Parcels Near Superior Airport 250 acres

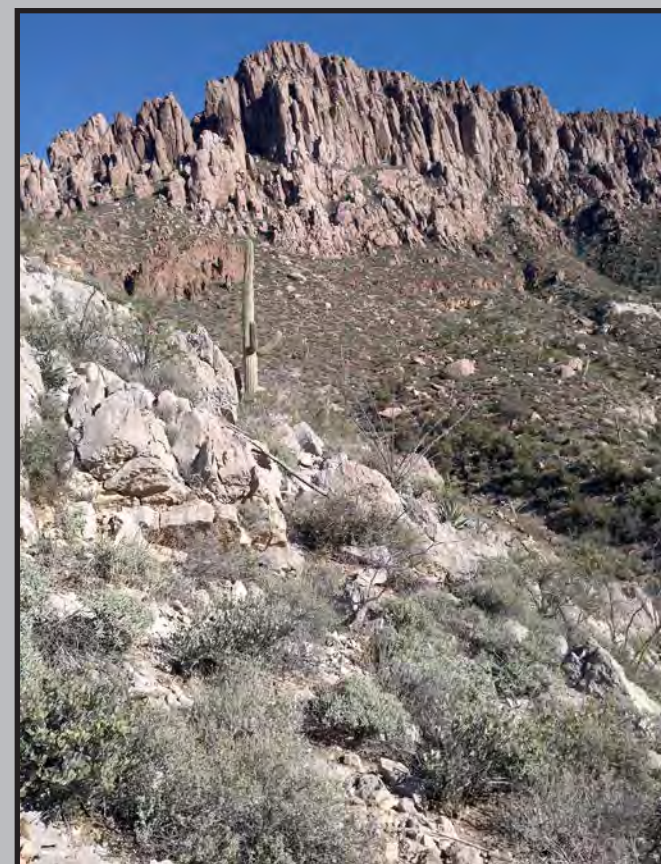


Superior Airport Reversionary Interest, 265 acres



Transfer from Resolution Copper Mining, LLC to Forest Service

2 Apache Leap South End 110 acres



3 Turkey Creek 147 acres



4 Tangle Creek 148 acres



5 Cave Creek 149 acres



6 East Clear Creek 640 acres





United States Department of Agriculture
Tonto National Forest

Resolution Copper Project and Land Exchange Environmental Impact Statement

Example Issue Statements

As part of scoping, we need your input
on important issues to be analyzed

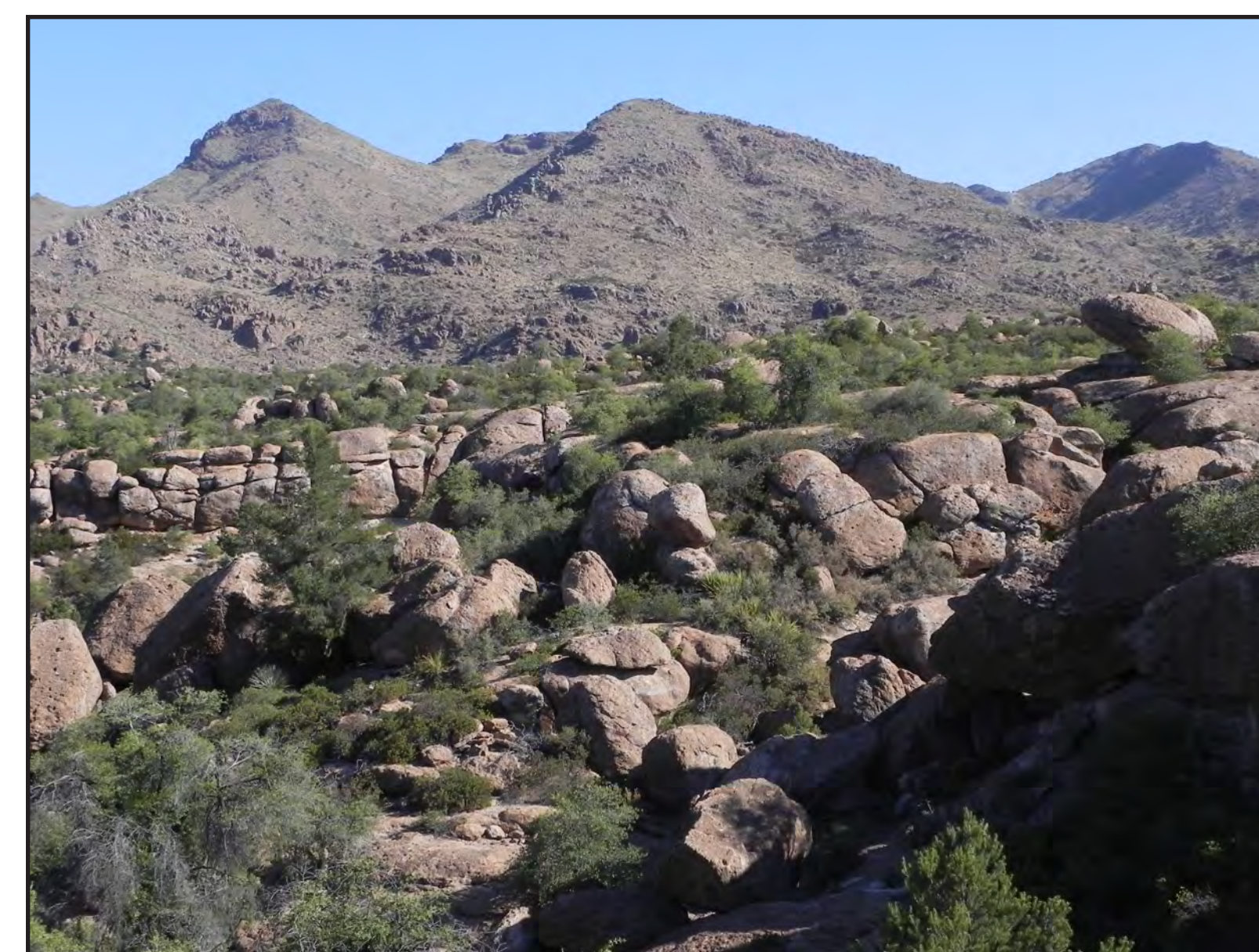
What issues concern you?

How will the mine affect **threatened, endangered, and sensitive species**?



Arizona Hedgehog Cactus

How will the mine and the land exchange affect **cultural resources**, and the newly designated **Chi'chil Bildagoteel (Oak Flat) Historic District**?



Oak Flat

How will the mine and land exchange affect **sites sacred to Native Americans**?

How will the mine operations affect **air quality and visibility**?

How much **employment and tax revenue** will result from the mine?

What will happen to **property values**?

How will the mine and land exchange affect **OHV use, recreation, and wilderness areas**?



Apache Leap

*Please provide written comments about
specific issues that concern you*



United States Department of Agriculture
Tonto National Forest

Resolution Copper Project and Land Exchange Environmental Impact Statement

Example Issue Statements: **Water**

Water resources could be affected by the mine in a variety of ways. Groundwater is currently being pumped to dewater the mine, and additional water supplies would be needed for ore processing. Changes to groundwater levels can potentially affect sensitive surface resources like springs and perennial streams. Runoff could be diverted by changes to the topography, such as around the area of subsidence and the tailings facility, which could change the amount of water reaching downstream drainages. The water quality of groundwater and surface water could be affected by mine drainage or seepage from the tailings facility.



Devils Canyon



Resolution Mine Infrastructure near Oak Flat

How will dewatering for mining affect the groundwater aquifer?

Will dewatering or surface diversions affect riparian areas along Devil's Canyon, Queen Creek, Gila River, or other drainages?

Will mining affect groundwater quality? Will seepage from the tailings facility impact downstream waters or residential wells?

Will runoff from tailings or the mine site be contaminated?

Where will the mine water supply come from?

Will the mine affect seeps and springs? Will other livestock water sources be affected?

***Please provide written comments about
specific issues that concern you***

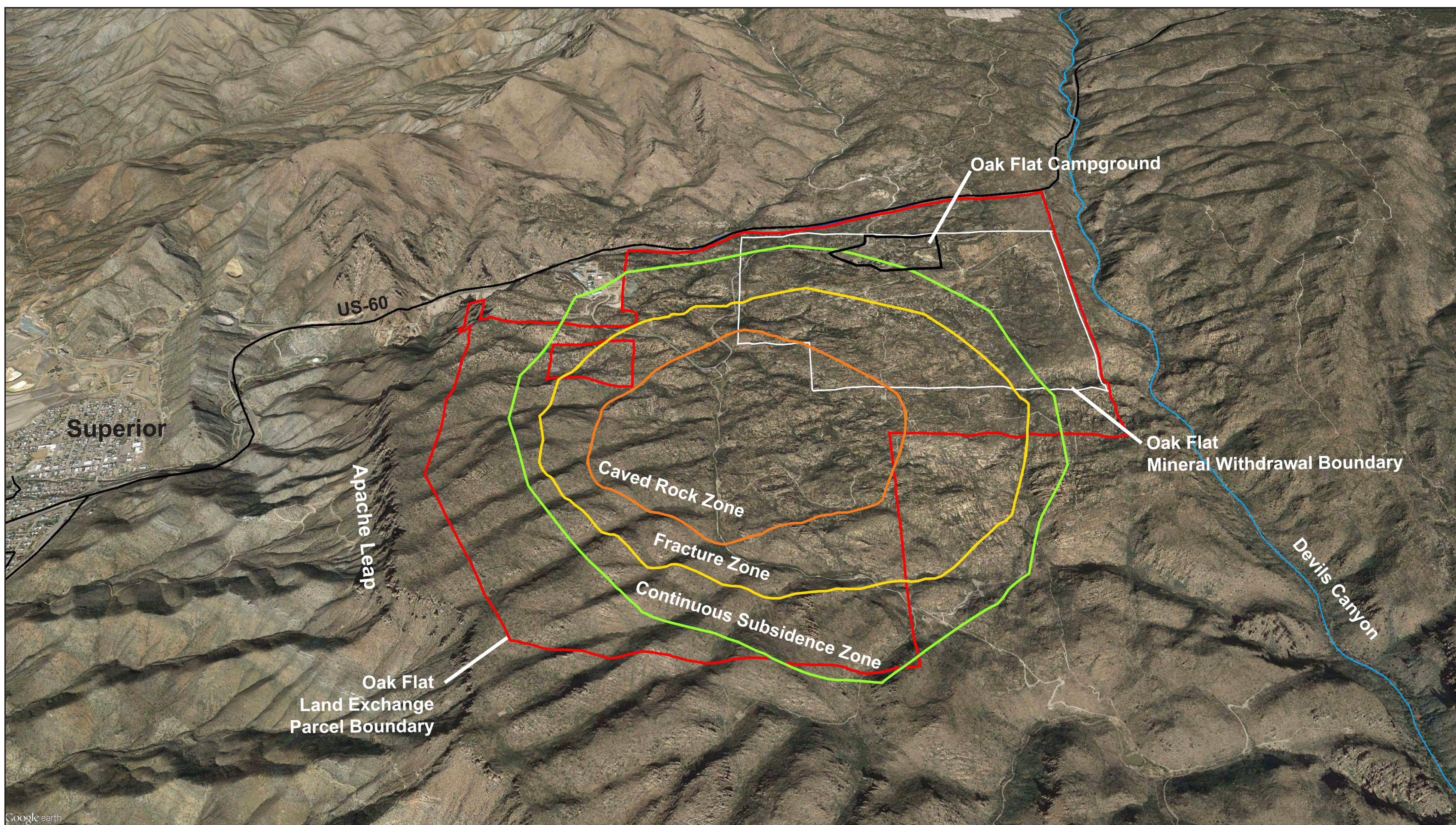


United States Department of Agriculture
Tonto National Forest

Resolution Copper Project and Land Exchange Environmental Impact Statement

Example Issue Statements: **Subsidence**

Underground mining can result in what's known as subsidence. Resolution Copper proposes to gradually remove ore approximately 5,000 to 7,000 feet below the surface, which will leave a void. Slowly, the earth and rock overhead will collapse downwards to fill that void. Eventually the ground surface itself will sink downwards. Resolution Copper predicts that over a period of about 40 years, a subsidence crater up to 1,000 feet deep could develop where Oak Flat is today.



How wide and deep would the subsidence crater be?

How fast would the subsidence happen?

Can other mining technologies be used that would prevent subsidence from occurring?

Will subsidence affect Apache Leap?

***Please provide written comments about
specific issues that concern you***



United States Department of Agriculture
Tonto National Forest

Resolution Copper Project and Land Exchange Environmental Impact Statement

Public Comment

Please provide scoping comments!

The scoping comment period is from March 18, 2016 to May 17, 2016.*
Your comments will be most useful if received by the closing date of the scoping comment period.

*** The comment period has been extended through July 18, 2016.**

- Fill out the **comment form** provided and drop in box or mail in at a later date
- Provide a **verbal comment tonight** with the court reporter
- Send email to: **comments@ResolutionMineEIS.us**
- Send voicemail or fax to: **1-866-546-5718**
- Fill out comment form on website: **www.ResolutionMineEIS.us**
- Send mail to : Resolution EIS Comments
P.O. Box 34468
Phoenix, AZ 85067-4468

For Further Information:

Tonto National Forest Supervisor's Office
2324 E. McDowell Rd. Phoenix, Arizona 85006
(602) 225-5200
Project Manager: Mark Nelson

<http://www.fs.usda.gov/tonto/>
<http://www.ResolutionMineEIS.us/>