



Snapshot

Resolution Copper Project – Tailings Alternatives

#2: Near West Proposed Action

SUMMARY

This alternative is a variation of the proposed action described in the May 9, 2016, version of Resolution Copper’s General Plan of Operations. In early 2018, Resolution Copper changed its original plan for an ‘upstream’ embankment design to a ‘modified centerline’ configuration for a tailings storage facility (TSF).

Alternative 2 would include a split-stream tailings processing method with two tailings types:

- Non-potentially acid generating (NPAG) tailings (also known as scavenger tailings)
- Potentially acid generating (PAG) tailings (also known as pyrite tailings)

PAG tailings have a greater potential to oxidize and generate acidic seepage to groundwater or surface waters. To minimize this potential, PAG tailings would be deposited centrally in the TSF and surrounded by NPAG tailings. A 5- to 10-foot deep water cap would saturate PAG tailings to reduce exposure to oxygen during TSF development.

Additionally, the larger NPAG deposit would act as a buffer between the PAG tailings and areas outside the TSF. Water spigots would keep the NPAG tailings

“beach” area wet, ensuring effective dust management during operations.

Modified Centerline embankment construction would consist of earthfill and cyclone sand from the NPAG tailings stream. This sand results from tailings processed through one or more dedicated centrifuges to separate tailings particles.

A suite of engineered seepage controls -- including engineered low-permeability liners, compacted fine tailings, and/or a “grouting” process to seal ground fractures -- would limit and contain seepage.

Uncontained seepage would be collected in downstream ponds and pumped back to the TSF.

Location:

Tonto National Forest - 3 miles west of Superior and 3 miles east of Queen Valley

Numbers:

3,300 acres – disturbance footprint at tailings storage

4,900 acres - total footprint within fenceline for auxiliary facilities and tailings storage

520 feet – embankment height

10 miles – embankment length

ALTERNATIVES OVERVIEW

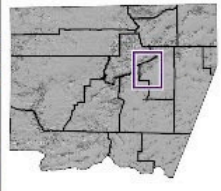
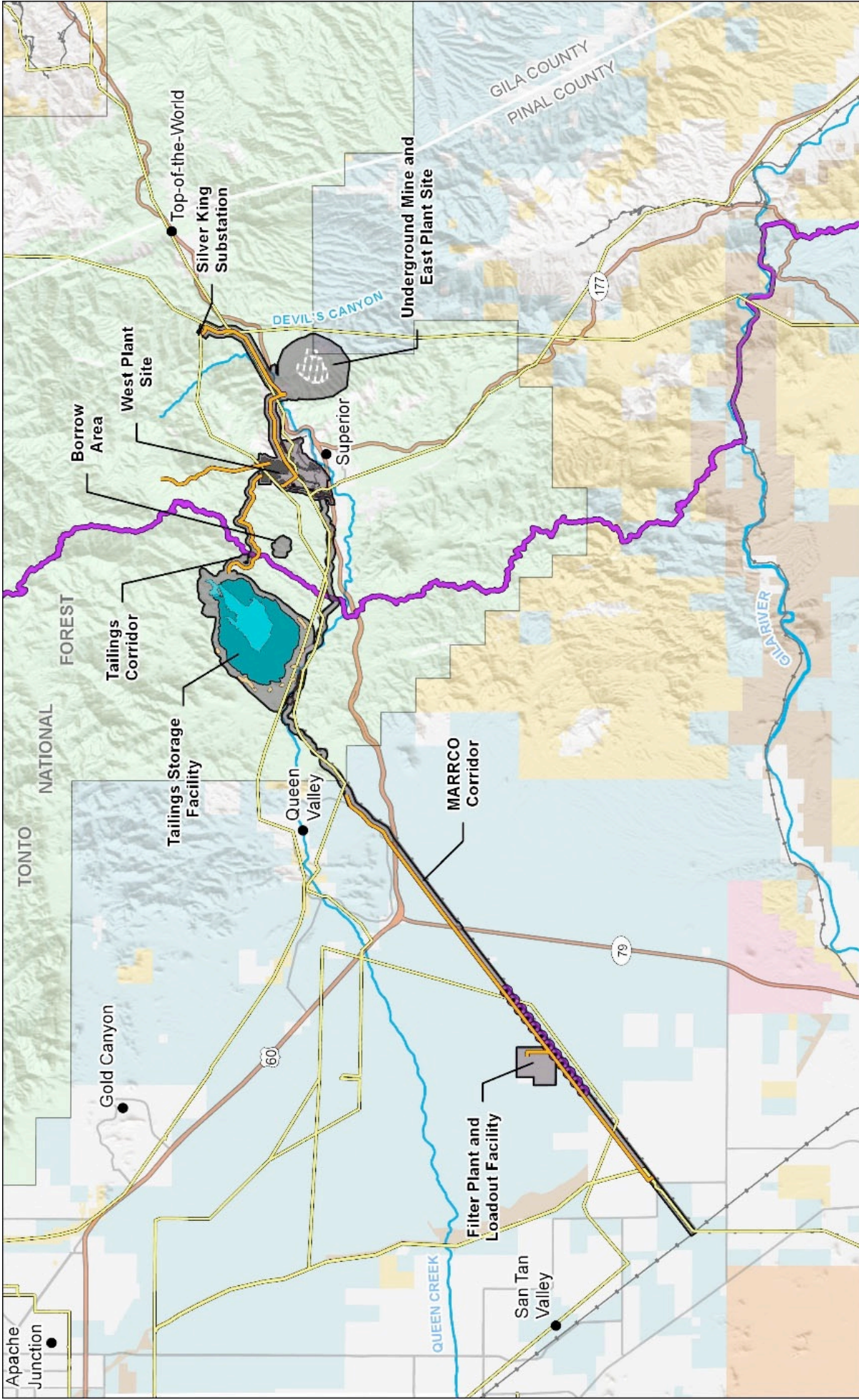
The National Environmental Policy Act requires the Forest Service to investigate alternatives to the various aspects of the proposed action as part of the Environmental Impact Statement process for the Resolution Copper Project and Land Exchange.

Alternatives are a mix of reasonable strategies that meet the purpose of and need for the proposed action, while resolving or addressing key issues identified during scoping.

In addition to the No Action Alternative (sequentially

known as Alternative #1), the Forest Service is considering five reasonable “action” alternatives. A Draft EIS document will include an alternatives chapter that expands on each reasonable alternative. The Forest Service is projecting a late July/early August 2019 release of the Draft EIS.

Resolution Copper Project and Land Exchange info is available at: <http://www.resolutionmineeis.us/>.



- Pumping wells
- New Power Line
- Existing Power Line
- AZ Scenic Trail
- Railroad
- Proposed Action Component
- Tailings Storage Facility
- PAG Cell
- Seepage Dams
- Existing Disturbance
- Mining Panel
- Land Ownership: Forest Service
- Bureau of Land Management
- Bureau of Reclamation
- Department of Defense
- Private/Other
- State
- Tribal

Resolution Copper Project and Land Exchange

0 3 6 Miles