

TECHNICAL MEMORANDUM

DATE: July 20, 2018 **PROJECT #:** 605.8501
TO: Vicky Peacey, Resolution Copper
FROM: Janis Fleming, Matt Shelley, and Tim Bayley
PROJECT: Skunk Camp Investigations
SUBJECT: Results of Site Reconnaissance

Introduction

In accordance with a request from Resolution Copper (RC), Montgomery & Associates (M&A) has prepared this summary of reconnaissance investigations at the Skunk Camp site, an alternative site for a future tailings storage facility (TSF).

Location

The Skunk Camp proposed TSF is located approximately 14 miles southeast of Superior and approximately 5 miles east-northeast of the Ray Mine in Pinal and Gila Counties, Arizona. The site is located in the Dripping Spring Wash basin, and is accessible from Arizona Highway 77. The project study area, proposed TSF footprint, and sites visited during field reconnaissance are shown on **Figure 1**. The Skunk Camp TSF alternative is located on Arizona State Trust, U.S. Bureau of Land Management, and private land in T. 2 S., R. 14 E., Sec. 33 – 35; and T. 3 S., R. 14 E., Sec. 1 – 17, and 21 – 24 as shown on **Figure 2**.

The proposed TSF is located in Dripping Spring Wash basin and for the most part lies on Quaternary alluvial deposits and Miocene Gila conglomerate. Small portions of the westernmost edge of the proposed facility lie on Paleozoic sedimentary rocks and younger Precambrian metasedimentary rocks and diabase (**Figure 3**).

Field Reconnaissance and Preliminary Investigations

Reconnaissance investigations were conducted by RC, M&A, and WestLand Resources, Inc. (WRI) personnel April to June 2018. M&A focused on hydrogeologic features and WRI focused on biological features.

Montgomery & Associates

M&A conducted preliminary hydrogeologic investigations on May 24, and June 4 and 5, 2018. During the field investigations, seven springs were visited. Where possible, water samples were collected. Results of the investigations are discussed later in this memorandum.

WestLand Resources, Inc.

WRI conducted a preliminary reconnaissance of the biological resources in the area on June 4 and 5, 2018. WRI visited selected springs and stock ponds; results are discussed later in this memorandum.

Hydrogeologic Framework

Geology

The Skunk Camp reconnaissance area lies within the Hot Tamale Peak (formerly Sonora), El Capitan Mountain, Pinal Ranch, and Pinal Peak quadrangles; the proposed TSF lies mostly within the Hot Tamale Peak (Sonora) quadrangle; the easternmost portion lies within the El Capitan Mountain quadrangle. The geology of the Sonora quadrangle was mapped by Cornwall and others (1971), the El Capitan Mountain quadrangle by Cornwall and Krieger (1978), and the Pinal Ranch quadrangle by Peterson (1963).

Principal Geologic Units

The hydrogeologic features in the Skunk Camp area are shown on **Figure 3**. Within the study area, geologic units range in age from Holocene alluvium in active stream channels to older Precambrian schist basement rock. Within the proposed TSF footprint, the principal geologic units include Quaternary alluvium in active stream channels and on low-lying terraces (Qal); older Quaternary gravels (Qoa); Miocene Gila conglomerate and pediment veneer (Tcg); Paleozoic sedimentary units including Pennsylvanian Naco formation (Pnaco), Mississippian Escabrosa Limestone (Me), Devonian Martin Formation (Dm), Cambrian Abrigo Formation (Ca), and Cambrian Bolsa Quartzite (Cb); and younger Precambrian units including diabase (Yd), Troy Quartzite (Yt), basalt (Yb), Mescal Limestone (Ym), Dripping Spring Quartzite (Yds), and Pioneer Formation (Yp) (Cornwall and others, 1971; Cornwall and Krieger, 1978).

Structural Geology

The rocks in the Dripping Spring Mountains west of Dripping Spring Wash basin are complexly faulted. The central part of the Dripping Spring Mountains to the west of the proposed TSF footprint comprises a graben bounded by north-south trending faults. The eastern Ransome fault, and a splay to the east, extend into the Gila conglomerate (Tcg) in the western portion of the footprint (Cornwall and others, 1971) (**Figure 3**). A steeply dipping unnamed normal fault, with the east side down-dropped relative to the west side, bounds the western border of the Dripping Spring Valley and has more than 2,900 feet of displacement in the northern part of the valley and more than 1,470 feet south of the toe of the TSF footprint (Cornwall and others, 1971). The unnamed fault and the Ransome fault join in Sec. 33 (T. 2 S., R. 14 E.) near the north end the proposed TSF footprint and continue to the north (**Figure 3**).

The ages of the Ransome and unnamed basin-bounding faults are ambiguous. The Ransome fault cuts the Gila conglomerate in Sec. 9 and in the southern part of Sec. 4 (T. 3 S., R. 14 E.), but is concealed by the conglomerate to the north, suggesting movement along the fault during deposition of the Gila conglomerate in Miocene time (18.8 - ~15 Ma). The unnamed basin-bounding fault cuts Gila conglomerate and Quaternary alluvium in Sec. 20 and 29 (T. 2 S., R. 14 E.), suggesting movement along the fault during Pleistocene to Holocene time (2.6 Ma – recent) (Cornwall and others, 1971).

Depth to Bedrock

Quaternary alluvial deposits and Miocene Gila conglomerate underlie most of the proposed TSF footprint, and Paleozoic and younger Precambrian bedrock units crop out along the western edge of the footprint in the Dripping Spring Mountains (**Figure 3**). Bedrock units bound the west and east sides of Dripping Spring Wash basin. The basin is asymmetric with a thick wedge of Quaternary alluvium and Miocene basin-fill deposits (Gila conglomerate) along the western edge of the basin that tapers toward the eastern edge of the basin (Cornwall and others, 1971). The thickness of the combined Quaternary alluvium and Miocene Gila conglomerate decreases east of the basin-bounding fault. Paleozoic and Precambrian bedrock units outcrop in the Pinal Mountains on the east side of Dripping Spring Valley.

The thickness of the Quaternary alluvial deposits in Dripping Spring Valley is generally less than 150 feet (ADWR, 2009). Available driller's logs do not provide sufficient data to definitively distinguish between Quaternary alluvium and Miocene Gila conglomerate, but a driller's log for a well within the TSF footprint indicates the top of a clay layer at a depth of 20 feet below land surface (bls) which may be the top of the Gila conglomerate. The Gila conglomerate extends from 20 to 230 feet bls at this well. Depth to bedrock is unknown.

Drillhole data indicate more than 2,900 feet of combined Quaternary alluvium and Miocene Gila conglomerate east of the basin-bounding fault in Sec. 20, T. 2 S., R. 14 E. in the north-central part of the Sonora (Hot Tamale) quadrangle, about 2 miles north of the TSF footprint (Cornwall and others, 1971) (**Figure 3**). Depth to bedrock is more than 2,900 feet at this location. A well drilled in the northwest corner of Sec. 24, T. 3 S., R. 14 E. in the center of Dripping Spring Valley, about 1 mile south of the TSF footprint, penetrated more than 1,470 feet of combined Quaternary alluvium and Miocene Gila conglomerate (Cornwall and others, 1971) (**Figure 3**). Depth to bedrock is more than 1,470 feet in this area.

Groundwater Occurrence

The major aquifers in the Skunk Camp area of interest include stream channel alluvium and Gila conglomerate. The Quaternary stream channel alluvium (mostly sand and silt) is the principal water-producing unit (ADWR, 2009).

Wells

Well and hydrogeologic data were compiled for the study area. The principal sources of well data were the Arizona Department of Water Resources (ADWR) 55-Well Registry and Groundwater Site Inventory (GWSI) databases. Available drillers' logs for wells in the study area were retrieved from the ADWR imaged well records. Information for the wells from the ADWR and GWSI databases is provided in **Table 1** and locations are shown on **Figure 1**; ADWR imaged records are provided in **Appendix A**. The GWSI database generally has more precise location information, and the wells are visited periodically to measure and record water levels and water quality parameters. In the following discussion, the wells are divided into three groups: wells located within the TSF footprint, wells located within 1 mile of the footprint, and wells located 3 to 4 miles downgradient from the footprint.

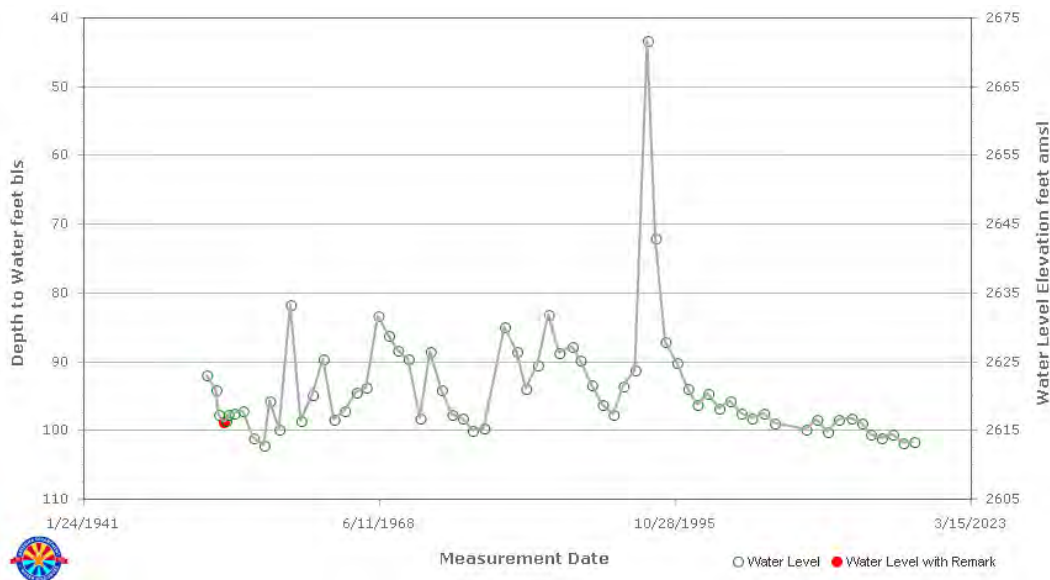
The ADWR well registry database shows ten registered wells within the Skunk Camp proposed TSF footprint; two of these are duplicate registrations. Wells 55-632696 and 55-622477 are also included in the GWSI database. The wells within the TSF footprint are completed to depths ranging from 250 to 900 feet bls; most of the wells are 250 to 400 feet deep. These wells are likely completed in alluvium and upper Gila conglomerate (**Table 1, Figure 1, Appendix A**).

Three wells are located within 1 mile of the TSF footprint. Well 55-622471 is also included in the GWSI database. Depths of the wells range from 51 to 615 feet bls, and are likely completed in alluvium and upper Gila conglomerate. Well 55-622471 was drilled to

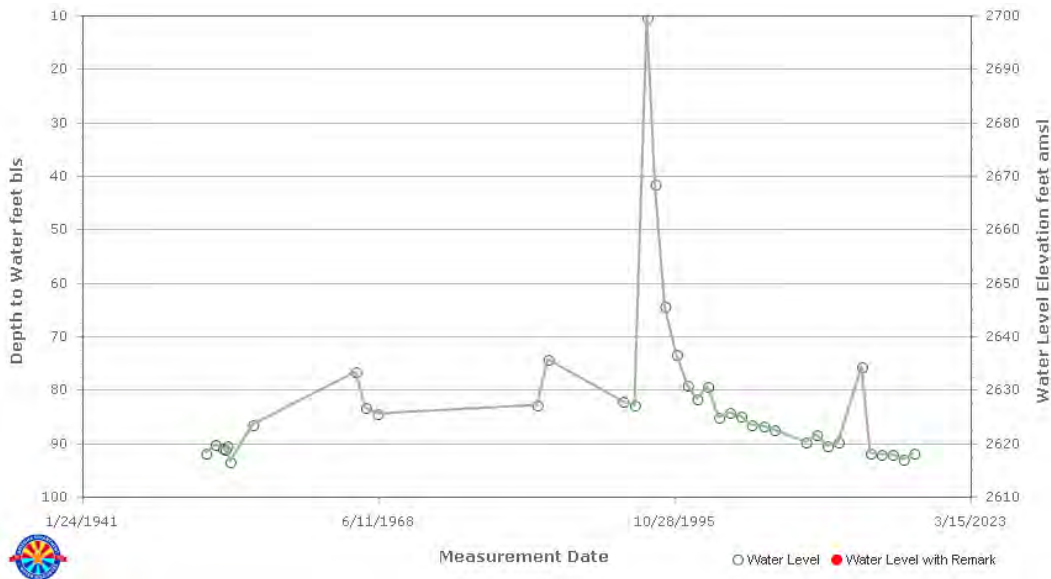
a depth of 1,475 feet bls, was completed to 615 feet bls, and reportedly was equipped with a 1,200 gallon per minute (gpm) pump (**Table 1, Figure 1, Appendix A**).

Twenty one wells are located in a rural settlement approximately 3 to 4 miles down-gradient from the TSF footprint adjacent to Dripping Spring Wash; one is a duplicate registration. Five wells are also included in the GWSI database; wells 55-624276 and 55-607669 have long-term water level records (shown below). The wells are completed to depths ranging from 102 to 365 feet bls, and are likely completed in alluvium and upper Gila conglomerate (**Table 1**). The downgradient wells are shown on **Figure 4**. Completion information is not available for wells 55-518323 or 55-227590.

Hydrograph for well 55-624276



Hydrograph for well 55-607669



Groundwater Elevation

Table 2 is a summary of available groundwater elevations from the ADWR and GWSI databases, and from RC reconnaissance investigations. **Figure 4** shows groundwater elevation contours for the Skunk Camp area. Water elevations used to prepare **Figure 4** are from numerous dates and include: GWSI water levels for eight wells for June 1936 (1 well), December 1979 (1 well), November 1996 (4 wells), and November 2017 (2 wells); RC reconnaissance at wells 55-632797 and 55-632800 in April 2018; well 55-205266 was measured in February 2005 (**Table 2, Figure 4**). Depths to water level ranged from 70 feet bls in November 1996 at well 55-518323 to 180 feet bls at well 55-205266 in February 2005.

Direction of Groundwater Movement

Direction of groundwater movement is from northwest to southeast (**Figure 4**). The lateral hydraulic gradient, calculated based on water levels from wells 55-632796, located near the north end of the proposed TSF footprint, and 55-622471, located about ¾-mile south of the toe of the footprint, is 0.021 feet per foot (ft/ft) along Dripping Spring Wash. For wells 55-632797, located within the northeast part of the footprint, and 55-607669, located about 3 miles downgradient in the rural settlement, the calculated gradient is 0.024 ft/ft along Dripping Spring Wash.

Saturated Thickness

South of the TSF footprint at well 55-622471, saturated thickness is more than 1,300 feet. The borehole for the well was drilled to a depth of 1,475 feet bls; however, the well was completed to a depth of 615 feet bls, which may suggest that water production below 600 feet was low.

Aquifer Parameter Estimates

There are no test data for any of the wells in the Skunk Camp area. During characterization of the Near West site, Golder conducted bottomless bucket and constant-head tests in excavated pits. Based on results of 28 bottomless bucket tests and one constant-head test in alluvial sediments, the geometric mean field saturated hydraulic conductivity value was 1×10^{-3} centimeters per second (cm/sec) (Golder, 2017). Results for a constant-rate pumping test at test well DS17-17, completed in alluvial sediments at Near West, indicate a hydraulic conductivity of 6×10^{-1} cm/sec (M&A, 2017b).

Hydraulic conductivity for the Gila conglomerate was estimated based on 14 hydrologic tests conducted at monitor wells in the RC West Plant area. Estimates of hydraulic conductivity of the conglomerate (excluding one test for a mudstone unit within the Gila Group), range from 1×10^{-7} to 6×10^{-9} cm/sec; arithmetic mean is 3×10^{-6} cm/sec and geometric mean is 5×10^{-7} cm/sec. Estimated hydraulic conductivity of the sandstone/mudstone unit (one test) within the Gila Group is 1.3×10^{-9} cm/sec (M&A, 2014).

An 18-hour pumping test at a well completed in the sandstone facies of the Gila Group at Far West yielded a hydraulic conductivity of 4×10^{-6} cm/sec (M&A, 2012).

The geometric mean hydraulic conductivity value for Gila Group sedimentary units at the Near West area was 1×10^{-6} cm/sec (Golder, 2017). Results for a constant-rate pumping test at a well completed in Gila conglomerate at Near West indicate a hydraulic conductivity of 9×10^{-4} cm/sec (M&A, 2017a).

Groundwater Quality

Water quality parameters were not measured during reconnaissance investigations at Skunk Camp. The GWSI database has water quality information for the two wells identified below:

Well Identifier	Date Measured	Temperature (degrees Celsius)	Specific Conductance ($\mu\text{S}/\text{cm}$)	pH	Alkalinity (mg/L)
55-632796	8/7/96	29.5	720	7.4	239
55-800052	8/5/96	22	640	7.6	284

$\mu\text{S}/\text{cm}$ = microsiemens per centimeter
 mg/L = milligrams per liter

Surface Water

The stream channels within the footprint of the proposed TSF are ephemeral. The main drainage is Dripping Spring Wash; the primary tributaries include Stone Cabin and Skunk Camp Washes. Each of the main channels has numerous unnamed tributary washes (**Figure 1**). During reconnaissance investigations, 7 springs were located in the Skunk Camp area. All of the springs are located outside the proposed TSF footprint. Photographs of the springs that were visited during reconnaissance are provided in **Appendix B**.

Haley Spring

Haley Spring is located in an unnamed tributary west of Dripping Spring Wash (**Figure 1**) and occurs at the contact between younger Precambrian Dripping Spring Quartzite and underlying diabase (**Figure 3**). The spring was visited on May 24 and June 4, 2018 by M&A and WRI. A depression in the sandy wash substrate was damp but did not have standing water. The surrounding rocks were covered in moss.

Haley Spring is used by a local rancher, and has an extensive piping system, stock tanks, and a feeding station. The piping was detached at the time of the Q2 2018 visits. Near the spring and downstream for several hundred feet, there are numerous cottonwood, willow, oak, and juniper trees, a few sycamore trees, along with shrubs and grasses, all indicative of persistent water.

Looney Spring

Looney Spring is located in an unnamed tributary west of Dripping Spring Wash (**Figure 1**) and occurs in a fault zone in younger Precambrian Dripping Spring Quartzite and Mescal Limestone (**Figure 3**). The spring was visited on May 24 and June 4, 2018 by M&A and WRI. A 10-foot wide by 4-foot long by 10-inch deep pool occurs on the floor of the stream channel. About 100 feet downstream from the pool, a pipe was flowing at rate of 1 to 2 drips per second.

The spring is used by a local rancher and has steel and plastic piping, a stock tank, and a feeding station. A few cottonwood and willow trees are present, along with shrubs, grasses, and algae, indicative of more persistent water.

On May 24, 2018, water quality parameters were measured in the pool and a sample was collected: pH = 7.15; temperature (T) = 69.1 degrees Fahrenheit (°F); and specific electrical conductance (EC) = 831 microsiemens per centimeter (µS/cm). On June 4, 2018 parameters were measured: pH = 7.40; T = 19.4°F; EC = 844 µS/cm; oxidation reduction potential (ORP) = 154 millivolts (mv); and dissolved oxygen (DO) = 10.48 milligrams per liter (mg/L).

Skunk Spring

Skunk Spring is located in an unnamed tributary west of Dripping Spring Wash, approximately 0.3 miles downstream from Looney Spring (**Figure 1**). The spring occurs in a narrow channel with thin alluvium at the contact between Dripping Spring Quartzite and diabase (**Figure 3**). Skunk Spring was visited on June 4, 2018 by M&A and WRI but was dry. A few cottonwood trees are present.

Hill Spring

Hill Spring was identified in the ADWR 36- surface water rights data base. The location listed with ADWR is shown on **Figure 1**. The location is the same as Skunk Spring described above, but there was no evidence of another spring in the vicinity.

Chimney Spring

Chimney Spring is located in an unnamed tributary west of Dripping Spring Wash (**Figure 1**) and occurs at the contact between Barnes Conglomerate (basal Dripping Spring Quartzite) and diabase (**Figure 3**). The spring was visited on June 5, 2018 by M&A and WRI.

Chimney Spring is developed with a concrete headwall about 7 feet wide by 5 feet high across the channel. A pool approximately 10 feet by 7 feet by 2.5 feet deep occurs behind the headwall. A few willow trees are present along with grasses and shrubs, indicative of more persistent water. On June 5, 2018 parameters were measured and a sample was collected: pH = 8.08; T = 20.6°F; EC = 962 µS/cm; ORP = 116 mv; and turbidity = 5 Nephelometric turbidity units (NTU).

Indian Spring

Indian Spring is located in an unnamed tributary west of Dripping Spring Wash, approximately 0.5 miles downstream from Chimney Spring (**Figure 1**) and occurs at the contact between Dripping Spring Quartzite and diabase (**Figure 3**). The spring was visited on June 5, 2018 by M&A and WRI.

The spring is developed with a concrete headwall about 10 feet wide by 2 feet high across the channel. A pool approximately 12 feet by 8 feet by 6 inches deep occurs behind the headwall. Below the headwall is a flowing reach about 30 feet long. A pipe near the base of the headwall was flowing approximately 0.2 gallons per minute. From the spring and downstream for about 600 hundred feet, there are large cottonwood and sycamore trees, and willow trees, all indicative of persistent water. On June 5, 2018 parameters were measured: pH = 7.54; T = 20.5°F; EC = 755 μ S/cm; ORP = 87.2 mv; and DO = 2.64 mg/L.

Stone Cabin Spring

Stone Cabin Spring is located in Stone Cabin Wash which drains into Dripping Spring Wash from the east (**Figure 1**). The spring occurs in thick channel alluvium on diabase bedrock at the confluence of two smaller washes (**Figure 3**). The spring was visited on June 5, 2018 by M&A and WRI. A saturated reach approximately 40 feet long starts at the spring and extends downstream, but there was insufficient water to measure parameters or to collect a sample. The nearby soil has yellow orange staining. Numerous large sycamore and trees and willow are present, along with walnut trees and poison ivy, indicative of persistent water.

Stone Cabin Box Spring

Stone Cabin Box Spring is located in Stone Cabin Wash approximately 0.6 miles downstream from Stone Cabin Spring (**Figure 1**). The spring occurs in thick alluvium atop Bolsa Quartzite (**Figure 3**). The spring was visited on June 5, 2018 by M&A and WRI. A pool approximately 4 feet by 5 feet by 1 foot deep occurs in the channel. Cottonwood and walnut trees are present, along with herbaceous riparian plants, all indicative of more persistent water. The water in the pool had a fetid organic odor. Parameters were measured and a sample was collected: pH = 7.42; T = 19.5°F; EC = 1,384 μ S/cm; ORP = -233 mv; DO = 0.20 mg/L; and turbidity = 7 NTUs.

A tinaja at the base of a slide in the Bolsa Quartzite below the spring was approximately 5 feet by 8 feet by 4 feet deep. Parameters were measured: pH = 8.10; T = 21.3°F; EC = 949 μ S/cm; ORP = 172.4 mv; and DO = 7.31 mg/L.

Sample Results

At the time of preparation of this document, water quality sample results for the springs had not been received. Results will be provided when the data are available.

References

- Arizona Department of Water Resources, 2009, Arizona Water Atlas, Volume 3, southeastern Arizona planning area, June 2009.
- Cornwall, H.R., Banks, N.G., and Phillips, C.H., 1971, Geologic map of the Sonora quadrangle, Pinal and Gila Counties, Arizona: United States Geological Survey, Geologic Quadrangle Map GQ-1021, 1:24,000.
- Cornwall, H.R., and Krieger, M.H., 1978, Geologic map of the El Capitan Mountain quadrangle, Gila and Pinal Counties, Arizona: United States Geological Survey, Geologic Quadrangle Map GQ-1442, 1:24,000.
- Golder Associates, 2017, Near West TSF geotechnical field investigation summary report, Resolution Copper Mining LLC: report prepared for Resolution Copper Mining LLC, October 25, 2017.
- Montgomery & Associates, 2012, Results of Phase II hydrogeologic investigations in support of tailings prefeasibility study Far West Site: report prepared for Resolution Copper Mining, July 31, 2012.
- _____, 2014, Hydrogeologic data submittal, tailings prefeasibility study, Whitford, Silver King, and Happy Camp Sites: technical memorandum prepared for Resolution Copper Mining, LLC, September 15, 2014.
- _____, 2017a, Construction, development, and testing of hydrologic test well at the Near West tailings site, Resolution Copper, Pinal County, Arizona: report prepared for Resolution Copper, October 18, 2017.
- _____, 2017b, Hydrogeologic test well DS17-17 aquifer test: technical memorandum prepared for Resolution Copper, December 4, 2017.
- Peterson, N.G., 1963, Geology of the Pinal Ranch quadrangle, Arizona: United States Geological Survey Bulletin 1141-H, Plate 1, 1:24,000.

TABLE 1. SUMMARY OF ADWR AND GWSI WELL RECORDS FOR SKUNK CAMP AREA
PINAL AND GILA COUNTIES, ARIZONA

ADWR Number	Cadastral	ADWR UTM_X (meters)	ADWR UTM_Y (meters)	Land Surface Elevation (feet amsl) ^a	Owner Name	Drilled Depth (feet bls) ^b	Borehole Diameter (inches)	Well Depth (feet bls)	Casing Depth (feet bls)	Casing Diameter (inches)	Perforated Interval (feet bls)	Completion Date	Pump Rate (gpm) ^c	Water Level (feet bmp) ^d	Date Measured	Water Use	Log	Comments
Wells within TSF footprint																		
55-632797	(D-3-14)03acd	509247.4	3673529	3,410	Hebbard & Webb Co	---	---	300	50	6	---	5/1/1947	35	164	4/24/2018	Livestock	None	Legacy well on private parcel; Stone Cabin well; Slash S Ranch on Sonora/Hot Tamale Peak 7.5' quad; duplicate of 615313; topo map shows well at 03adc; WL measured by RC
55-615313	(D-3-14)03adc	509448.9	3673529	---	AZ State Land Dept	---	---	---	---	6	---	---	---	139	---	Livestock	None	Legacy well; windmill on Sonora/Hot Tamale Peak 7.5' quad; no imaged record; duplicate of 632797
55-632794	(D-3-14)04ac	507536.3	3673624	---	Hebbard & Webb Co	---	---	392	57	8	---	5/1/1943	35	175	5/1/1943	Livestock; domestic	None	Legacy well on private parcel; Headquarters #3 - inside pasture; at Slash S Ranch on Sonora/Hot Tamale Peak 7.5' quad
55-632795	(D-3-14)04ac	507536.3	3673624	---	Hebbard & Webb Co	---	---	400	34	8	---	8/1/1941	35	231	9/1/1941	Livestock; domestic	None	Legacy well on private parcel; Headquarters #2 - on hill; at Slash S Ranch on Sonora/Hot Tamale Peak 7.5' quad
55-632796	(D-3-14)04acb	507536.3	3673624	3,440	Hebbard & Webb Co	400	---	400	70	6	---	6/1/1936	35	172	6/1/1936	Livestock; domestic	None	Private parcel; Headquarters #1; windmill at Slash S Ranch; also GWSI 331206110550901; on 8/7/96 SC=720 µS/cm, T=29.5C, pH=7.4, Alk=239 mg/L
55-632800	(D-3-14)10dcc	509143.8	3671211	3,120	Hebbard & Webb Co	---	---	250	250	8	---	5/1/1940	35	73	4/19/2018	Livestock	None	Legacy well; windmill on Sonora/Hot Tamale Peak 7.5' quad at 10dcc; WL measured by RC
55-205266	(D-3-14)11abb	510661.9	3672522	---	Webb Cattle Co	230	8	230	230	6	205 - 225	2/1/2005	35	180	2/1/2005	Livestock	Driller	Skunk Camp; replacement for well 632801?
55-632798	(D-3-14)11abc	510762.9	3672421	---	Hebbard & Webb Co	---	---	300	50	6	---	5/1/1947	35	165	4/1/1947	Livestock	None	Legacy well; Skunk Camp Well #1; windmill on Sonora/Hot Tamale Peak 7.5' quad at 11abc
55-632801	(D-3-14)11abd	510762.9	3672421	---	Hebbard & Webb Co	---	---	400	75	6	---	5/1/1951	35	175	4/1/1951	Livestock	None	Legacy well; Skunk Camp Well #2; windmill on Sonora/Hot Tamale Peak 7.5' quad at 11abd; replaced by well 205266?
55-622477	(D-3-14)14bdb	510254.2	3670510	3,160	Rick Larry Jodsaas	900	---	900	900	10	---	---	6	120	11/19/1996	Livestock	None	Legacy well; also GWSI 331016110531801; ownership transferred to R. Jodsaas from S. Bolich 12/24/07; transferred to S. Bolich from R. Seger 5/12/04; transferred to R. Seger from V. Brown 7/11/1988; Brown Land & Cattle filed legacy registration 6/14/82; legacy record indicates well was completed to 900 ft and was used for livestock
Wells within 1 mile of TSF footprint																		
55-632799	(D-3-14)16cdb	507134.9	3669599	---	Hebbard & Webb Co	---	---	51	---	---	---	1/1/1951	35	2	1/1/1951	Livestock	None	Legacy well; windmill on Sonora/Hot Tamale Peak 7.5' quad at 16cdb
55-615943	(D-3-14)22cac	508644.9	3668293	---	AZ State Land Dept	---	---	501	501	10	---	---	---	240	---	Industrial	None	Legacy well
55-622471	(D-3-14)24bbb	511460.7	3669309	2,995	Rick Larry Jodsaas	1,475	---	1,400	615	16	260 - 600	3/14/1962	1,200	92.6	11/19/1996	Irrigation / Domestic	Driller	Private parcel; well on Sonora/Hot Tamale Peak 7.5' quad; well transferred to R. Jodsaas from S. Bolich 12/24/07; Victory Cross Ranch owned by S. Bolich 5/1/04; also wells 622472 through 622476, and 622477-622479; check these; well ownership transferred to S. Bolich from R. Seger 8/13/04; transferred to R. Seger from V. Brown 7/11/1988; Brown Land & Cattle filed legacy registration 6/12/82; legacy record indicates well was 20-in stovepipe to 1,400 ft and was used to irrigate 70 acres; transferred to V. Brown from T. Hagen in 9/1974; Hagen completed well installation 3/14/62; DTW was 160 ft bls; also in 35-database (17566) and GWSI 330947110523501
Wells 3 to 4 miles downgradient from TSF footprint																		
55-607650	(D-3-15)20ccb	514661.2	3668238	---	Brown, J. A.	---	---	250	250	8	---	8/3/1979	40	50	---	Domestic / Livestock / Irrigation	None	Legacy well; also 35-80707 (17567)
55-085753	(D-3-15)20ccc	514661.7	3668036	---	Brown, J. A.	---	---	200	203	7	100 - 200	10/9/1980	20	80	---	Irrigation	Driller	
55-227590	(D-3-15)20ccc	514661.7	3668036	---	F. Jane Bechtold	---	---	NA	NA	NA	---	NA	NA	NA	---	Domestic	None	NOI only as of 12/2017
55-615315	(D-3-15)20ddc	515864.8	3668042	---	AZ State Land Dept	---	---	250	250	8	---	1/1/1979	NA	88	---	Unknown	None	Legacy well
55-624275	(D-3-15)29a	515766.3	3667539	---	Bearup, W. E.	---	---	150	150	10	---	1/1/1934	170	85	---	Irrigation / Livestock / Domestic	None	Legacy well
55-624276	(D-3-15)29aab	515766.3	3667539	2,715	Bearup, W. E. (CGL Family Trust, Glenn Links Trustee)	---	---	300	200	18	---	1/1/1953	NA	102	11/13/2017	Irrigation	None	Legacy well; GWSI index well 330858110495101
55-568046	(D-3-15)29abd	515665.5	3667639	---	Altobelli Properties LLC	---	---	300	300	8	132 - 216 237 - 279	11/19/1998	NA	90	---	Domestic	Driller	
55-502917	(D-3-15)29ba	515163.9	3667737	2,580	Wind Spirit Community	---	---	365	365	8	180 - 200 260 - 300 320 - 360	7/13/1982	30	160	---	Domestic / Irrigation	Driller	
55-581480	(D-3-15)29bab	515063.3	3667837	---	Alfred Yslas	---	---	200	200	6	195 - 200	6/19/2000	NA	118	---	Domestic	Driller	
55-808287	(D-3-15)29bac	515064.1	3667636	---	James F. Didominicus	---	---	254	254	14	---	1/1/1972	NA	81	---	Domestic / Irrigation	None	#1 Well; GE image with locations
55-808288	(D-3-15)29bac	515064.1	3667636	---	James F. Didominicus	---	---	198	198	7	---	1/1/1973	NA	89	---	Domestic / Irrigation	None	#2 Well; GE image with locations
---	(D-3-15)29bac	---	---	---	Melvin P. Farmer	---	---	125	---	---	---	5/8/1978	---	77	---	Domestic	Driller	35-60390 (17570)
55-808015	(D-3-15)29bad	515264.5	3667637	---	Cynthia M. Phillips	---	---	160	NA	NA	---	12/31/1970	NA	60	---	Domestic / Irrigation	None	
55-807702	(D-3-15)29bba	514862.7	3667836	---	John Herrick & Patricia Ann Smith	---	---	310	285	6	100 - 285	2/1/1974	20	65	---	Irrigation / Domestic	None	

TABLE 1. SUMMARY OF ADWR AND GWSI WELL RECORDS FOR SKUNK CAMP AREA
PINAL AND GILA COUNTIES, ARIZONA

ADWR Number	Cadastral	ADWR UTM_X (meters)	ADWR UTM_Y (meters)	Land Surface Elevation (feet amsl) ^a	Owner Name	Drilled Depth (feet bls) ^b	Borehole Diameter (inches)	Well Depth (feet bls)	Casing Depth (feet bls)	Casing Diameter (inches)	Perforated Interval (feet bls)	Completion Date	Pump Rate (gpm) ^c	Water Level (feet bmp) ^d	Date Measured	Water Use	Log	Comments
55-085953	(D-3-15)29bbb	514662	3667835	---	Vonderhorst Irrev Tr, James E. McKee Trustee	---	---	200	200	7	100 - 200	10/24/1980	30	75	---	Domestic	Driller	Possible replacement well?
55-648945	(D-3-15)29bbb	514662	3667835	---	Vonderhorst Irrev Tr, James E. McKee Trustee	---	---	200	200	6	---	1/1/1974	15	120	---	Domestic	None	Legacy well; same as 085953; also 35-34708 (17571)
55-808289	(D-3-15)29bca	514864.5	3667435	---	James F. Didominicus	---	---	203	203	14	---	1/1/1968	NA	84	---	Domestic / Irrigation	None	#3 Well; GE image with locations
55-607669	(D-3-15)29bbd	515064.9	3667435	2,710	BLM-Phoenix District	---	---	300	200	10	---	12/31/1928	375	92	11/13/2017	Domestic / Irrigation / Livestock / Wildlife	None	Legacy well; Elkins well; also 29bdb; located in stream channel; leased from BLM by Glen Links; GWSI 330845110501701
55-625194	(D-3-15)29bdb	515064.9	3667435	---	Schweitzer, M. J.	---	---	250	NA	NA	---	NA	NA	NA	---	Irrigation / Livestock / Domestic	None	Legacy well; previous mining claim; Elkins well
55-800051	(D-3-15)29dab	515868.1	3667036	2,640	BLM-Phoenix District	---	---	120	120	10	---	12/31/1928	15	74	11/18/1996	Livestock / Wildlife	None	Legacy well; Smith well; conflicting construction information; GWSI 330828110494601; submersible pump in 1996
55-800052	(D-3-15)29dab	515868.1	3667036	2,645	BLM-Phoenix District	120	---	150	150	10	---	12/31/1928	170	73	12/18/1979	Irrigation / Domestic / Livestock / Wildlife	None	Legacy well; Bearup well; GWSI 330828110495001; electric turbine pump in 1996; on 8/5/96 EC=640µs/cm, T=22C, pH=7.6, Alk=284 mg/L
55-518323	(D-3-15)30bad	513670	3667633	2,798	Amado, Charlie	---	---	NA	NA	NA	---	NA	NA	70	11/22/1996	Unknown	None	No imaged record; GWSI 330852110510701

^a feet amsl = feet above mean sea level
^b feet bls = feet below land surface
^c gpm = gallons per minute
^d feet bmp = feet below measuring point

NA = Not available
--- = No data available

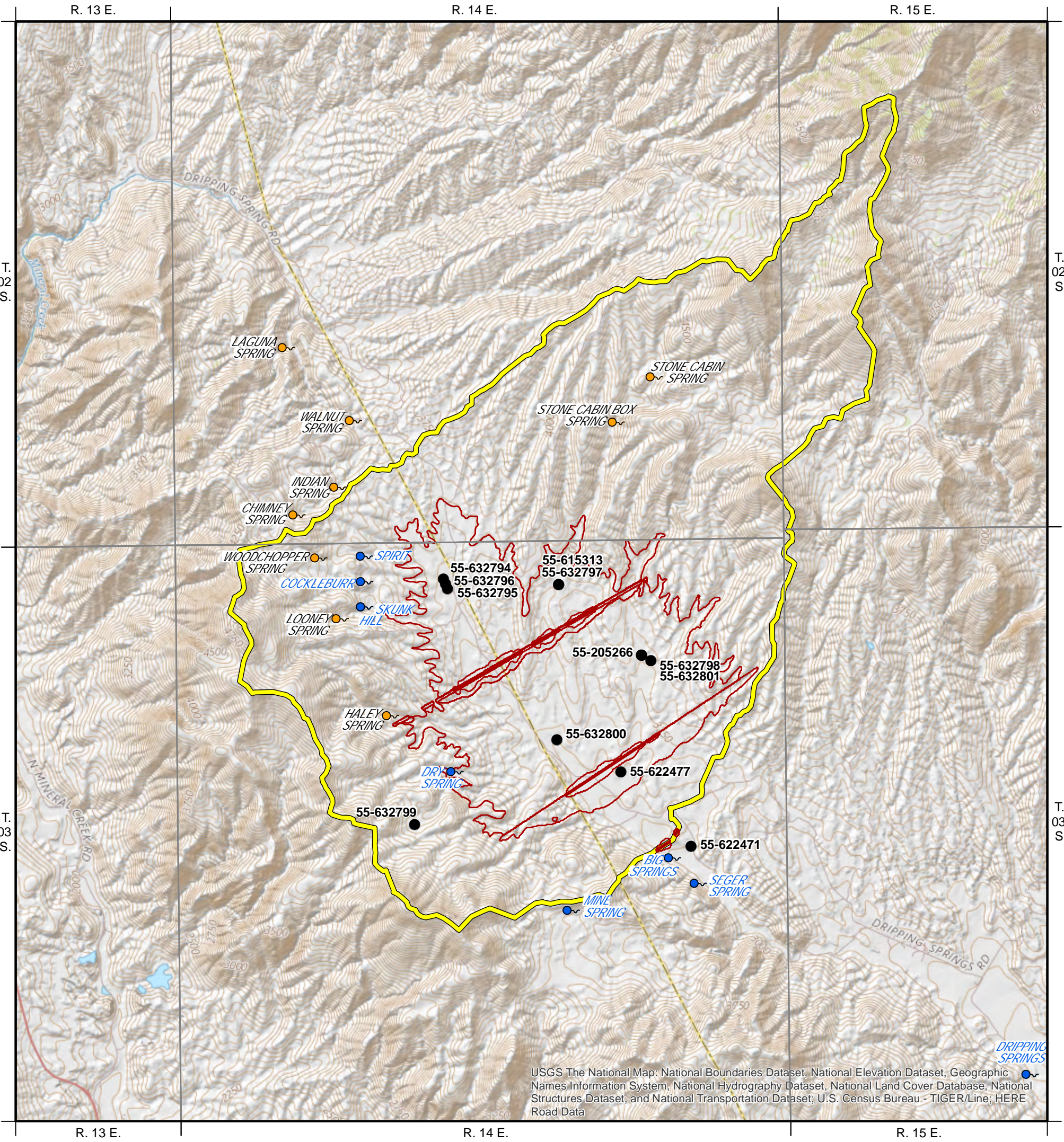


**TABLE 2. GROUNDWATER LEVELS IN THE VICINITY OF SKUNK CAMP AREA
PINAL COUNTY, ARIZONA**

ADWR Number	ADWR UTM_X (meters)	ADWR UTM_Y (meters)	Land Surface Elevation (feet amsl)^a	Water Level (feet bmp)^b	Date Measured	Groundwater Elevation (feet amsl)
55-632797	509247.4	3673529	3,410	164	4/24/2018	3,246
55-632796	507536.3	3673624	3,440	172	6/1/1936	3,268
55-632800	509143.8	3671211	3,120	73	4/19/2018	3,047
55-205266	510661.9	3672522	3,310	180	2/1/2005	3,130
55-622477	510254.2	3670510	3,160	120	11/19/1996	3,040
55-622471	511460.7	3669309	2,995	92.6	11/19/1996	2,902
55-624276	515766.3	3667539	2,715	102	11/13/2017	2,613
55-607669	515064.9	3667435	2,710	92	11/13/2017	2,618
55-800051	515868.1	3667036	2,640	74	11/18/1996	2,566
55-800052	515868.1	3667036	2,645	73	12/18/1979	2,572
55-518323	513670.0	3667633	2,798	70	11/22/1996	2,728

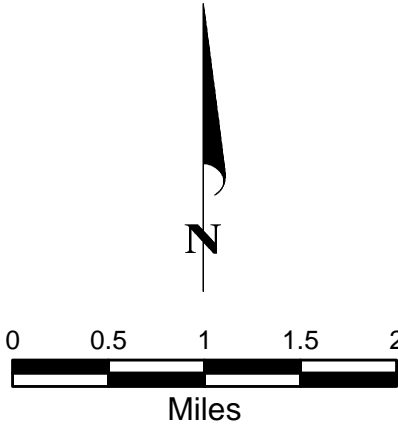
^a ft amsl = feet above mean sea level

^b ft bmp = feet below measurement point



EXPLANATION

- 55-632799 ADWR Well Location and Identifier
- Spring (ADWR surface water)
- Spring (ALRIS)
- Catchment
- Proposed TSF Footprint

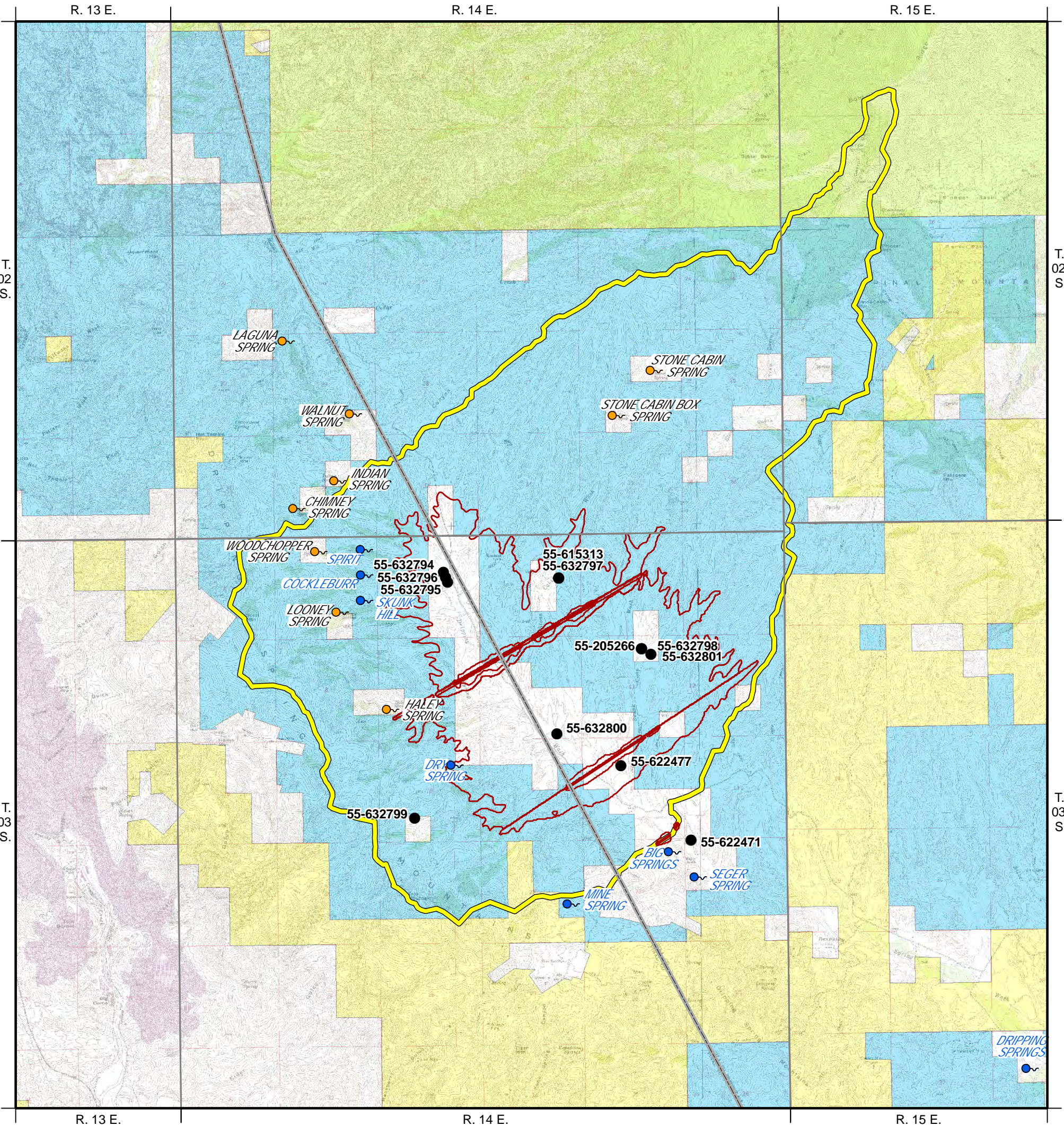


LOCATION MAP
Skunk Camp Proposed
Tailings Storage Facility

Water Resource Consultants

2018

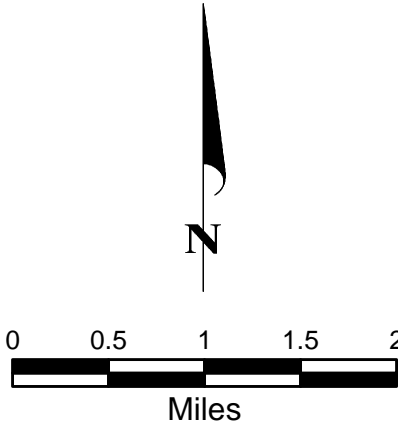
FIGURE 1



EXPLANATION

- 55-632799 ADWR Well Location and Identifier
- Spring (ADWR surface water)
- Spring (ALRIS)
- Catchment
- Proposed TSF Footprint

LAND OWNERSHIP	
	Private
	State Trust
	BLM
	Forest Service



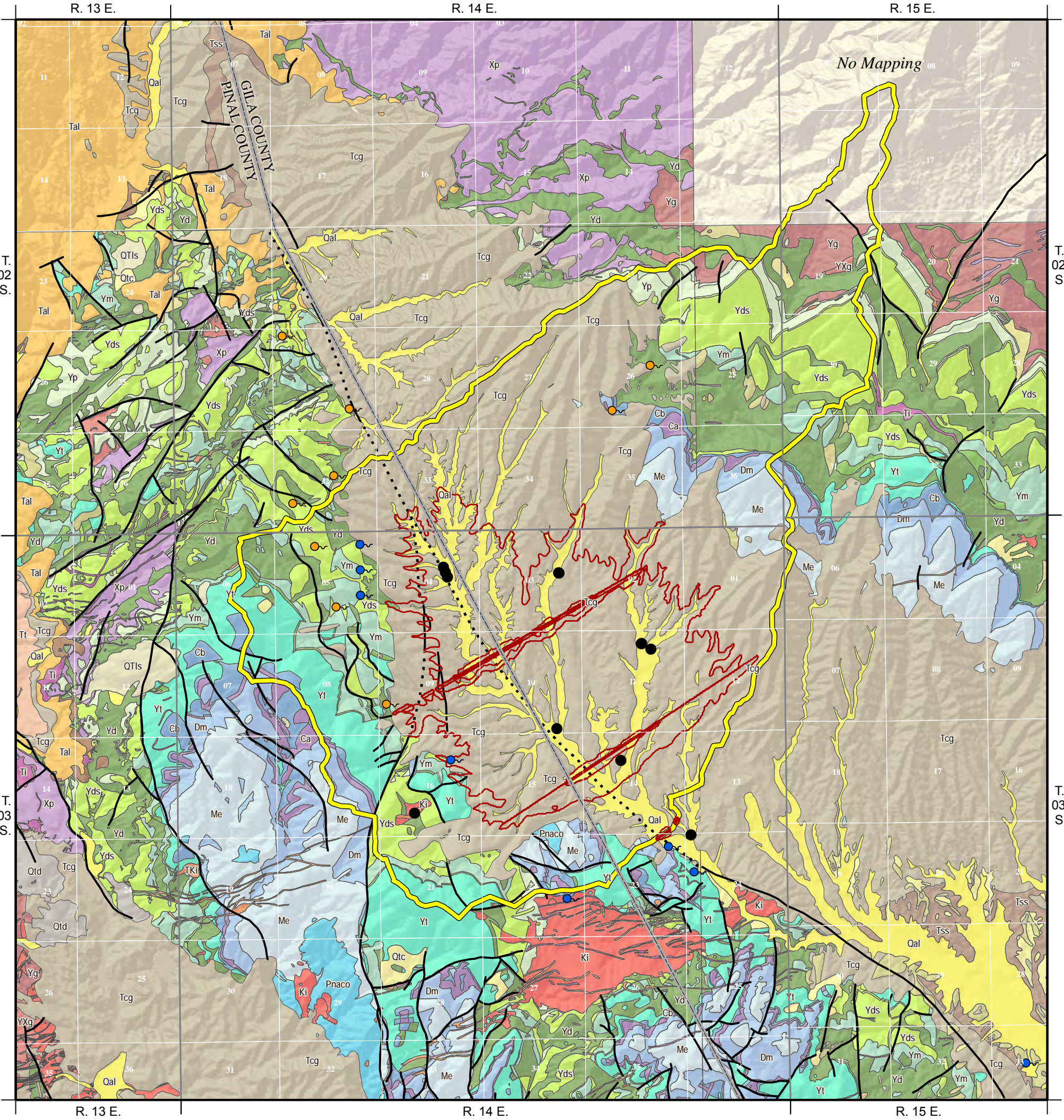
RESOLUTION
COPPER

LAND USE
Skunk Camp Proposed
Tailings Storage Facility

MONTGOMERY
& ASSOCIATES
Water Resource Consultants

2018

FIGURE 2

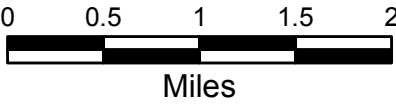


EXPLANATION

- ADWR Well Location
- Spring (ADWR surface water)
- Spring (ALRIS)
- Catchment
- Proposed TSF Footprint
- Fault; dotted where concealed

GEOLOGIC UNITS

Qtd	Disturbed Surficial Deposits (Holocene)	Pnaco	Naco Formation (Pennsylvanian)
Qal	Unconsolidated Alluvium (Holocene)	Me	Escabrosa Limestone (Mississippian)
Qtc	Talus and Colluvium (Quaternary)	Dm	Martin Formation (Devonian)
Qoa	Old Alluvium (late Pleistocene to early Pleistocene)	Ca	Abrigo Formation (Cambrian)
QTls	Older Landslide Deposits (early Quaternary to late)	Cb	Bolsa Quartzite (Cambrian)
Tcg	Conglomerate—Gila Group (Miocene) & pediment veneer	Yd	Diabase (middle Proterozoic)
Tss	Lake Deposits—Gila Group (Miocene)	Yt	Troy Quartzite (middle Proterozoic)
Tt	Tuff—Gila Group (Miocene)	Yb	Basalt (middle Proterozoic)
Tal	Apache Leap Tuff (early Miocene)	Ym	Mescal Limestone (middle Proterozoic)
Tw	Whitetail Formation (Miocene to late Oligocene)	Yds	Dripping Spring Quartzite (middle Proterozoic)
Ti	Tertiary Intrusive Rocks	Yp	Pioneer Formation (middle Proterozoic)
TKi	Tertiary to Cretaceous Intrusive Rocks	Yg	Granitic Rocks (middle Proterozoic)
Ki	Cretaceous Intrusive Rocks	YXg	Granitic Rocks (early or middle Proterozoic)
Mzbp	Basalt Porphyry (Mesozoic)	Xp	Pinal Schist (early Proterozoic)



RESOLUTION
COPPER

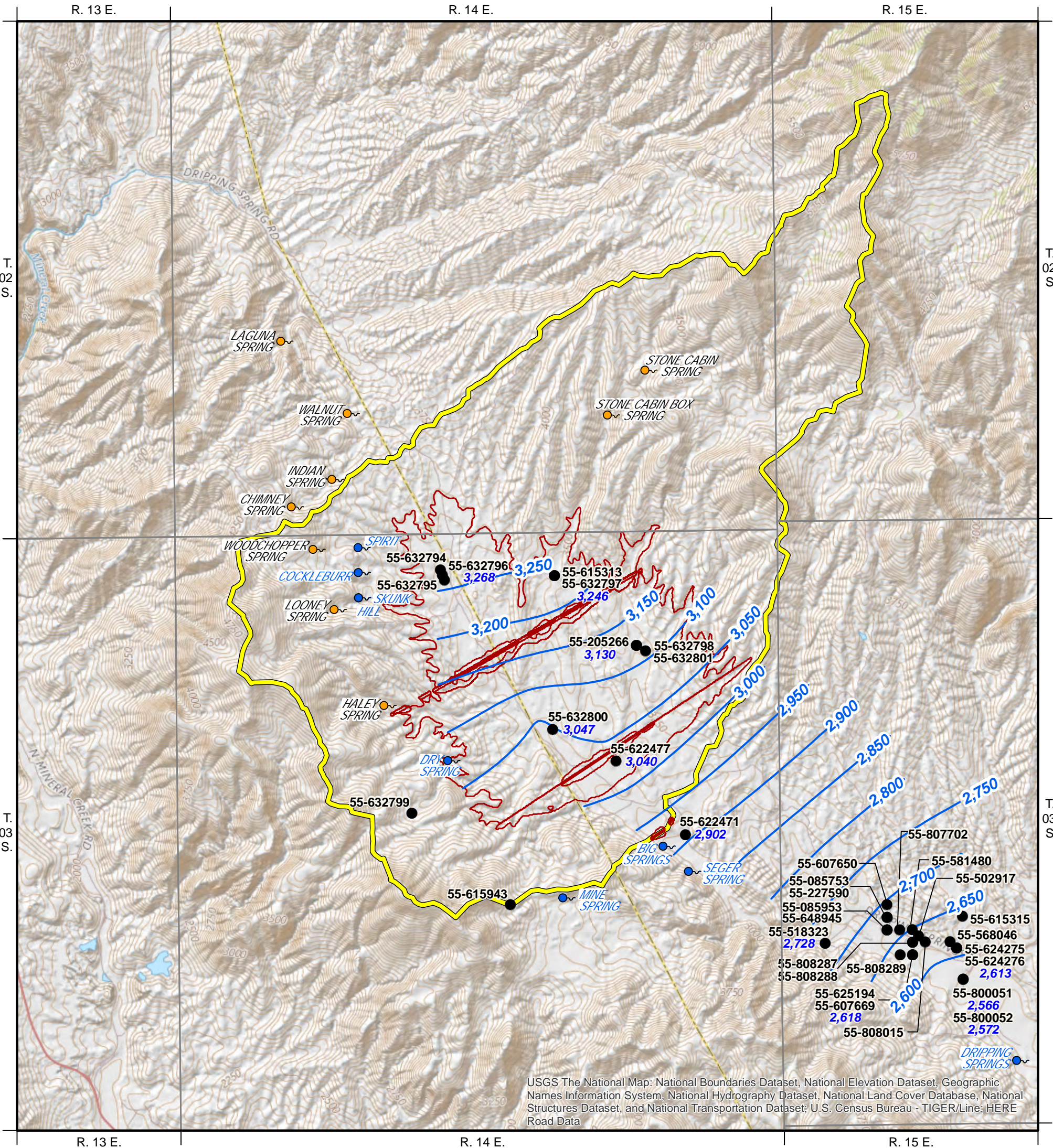
**HYDROGEOLOGIC
FEATURES**

**Skunk Camp Proposed
Tailings Storage Facility**

MONTGOMERY
& ASSOCIATES
Water Resource Consultants

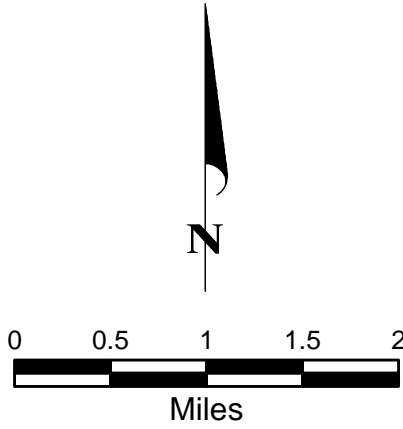
2018

FIGURE 3



EXPLANATION

- 55-622471 ADWR Well Location and Identifier
- 2,995 Groundwater Elevation (ft amsl)
- Spring (ADWR surface water)
- Spring (ALRIS)
- Catchment
- Proposed TSF Footprint
- 3,050- Groundwater Elevation Contours (ft amsl)





RESOLUTION
COPPER

**GROUNDWATER
ELEVATION MAP**

**Skunk Camp Proposed
Tailings Storage Facility**



**MONTGOMERY
& ASSOCIATES**
Water Resource Consultants

2018

FIGURE 4



Appendix A

Imaged Well Records

DEPARTMENT OF WATER RESOURCES

99 EAST VIRGINIA AVENUE
PHOENIX, ARIZONA 85004

REGISTRATION OF EXISTING WELLS

READ INSTRUCTIONS ON BACK OF THIS FORM BEFORE COMPLETING
PRINT OR TYPE - FILE IN DUPLICATE

REGISTRATION FEE (CHECK ONE)

EXEMPT WELL (NO CHARGE)

NON-EXEMPT WELL - \$10.00

ARIZONA
DEPT. OF

MAY 5 1982

WATER
RESOURCES

FOR OFFICE USE ONLY

REGISTRATION NO. 55- 632797

FILE NO. D(3-14)30cd

FILED MAY 05 1982 AT 3pm
(DATE) (TIME)

INA

AMA

1. Name of Registrant:

HEBBARD & WEBB CO.

5001 East Washington St. Phoenix Arizona 85034

(Address)

(City)

(State)

(Zip)

2. File and/or Control Number under previous groundwater law:

N/A

(File Number)

35-

(Control Number)

3. a. The well is located within the SE $\frac{1}{4}$ SW $\frac{1}{4}$ NE $\frac{1}{4}$, Section 3, of Township 3S N/S, Range 14E E/W, G & SRB & M, in the County of Gila.

- b. If in a subdivision: Name of subdivision N/A, Lot No. , Address .

4. The principal use(s) of water (Examples: irrigation - stockwater - domestic - municipal - industrial) Stockwater

5. If for irrigation use, number of acres irrigated from well .

6. Owner of land on which well is located. If same as Item 1, check this box ☒

(Address)

(City)

(State)

(Zip)

7. Well data (If data not available, write N/A) (STONE CABIN WELL)

- a. Depth of Well 300 feet
- b. Diameter of casing 6 inches
- c. Depth of casing 50 feet
- d. Type of casing Galv. Steel
- e. Maximum pump capacity 35 gallons per minute.
- f. Depth to water 165 feet below land surface.
- g. Date well completed April 1 1947
(Month) (Day) (Year)

8. The place(s) of use of water. If same as Item 3, check this box ☒.

$\frac{1}{4}$ $\frac{1}{4}$ $\frac{1}{4}$, Section Township Range

$\frac{1}{4}$ $\frac{1}{4}$ $\frac{1}{4}$, Section Township Range

Attach additional sheet if necessary.

9. DATE 5-4-82 SIGNATURE OF REGISTRANT

HEBBARD & WEBB CO.

MICROFILMED

INSTRUCTIONS FOR COMPLETING REGISTRATION FORM

General Instructions

1. A person who owns an "Existing Well" shall register the well, pursuant to A.R.S. 45-593, by filing this form in duplicate with the Department of Water Resources not later than midnight June 14, 1982. The form must be completed and signed. Failure to do so will constitute a violation of A.R.S. 45-593, and may subject the well owner to injunction and/or civil penalties, pursuant to A.R.S. Title 45, Article 12.
2. An "Existing Well" means, (1) a well which was drilled on or before June 12, 1980 and which is not abandoned or sealed, or (2) a well which was not completed on or before June 12, 1980, but for which a Notice of Intention to Drill was on file with the Arizona Water Commission on or before June 12, 1980.
3. No registration fee is required for Exempt Wells. A \$10.00 registration fee must accompany registration forms for all Non-Exempt Wells.
4. An "Exempt Well" means a well having a pump with a maximum capacity of not more than 35 gallons per minute which is used to withdraw groundwater. An Exempt Well may include the non-commercial irrigation of not more than 1 acre of land.
5. A "Non-Exempt Well" means a well that is not an "Exempt Well".

INSTRUCTIONS FOR REGISTRATION QUESTIONS

1. The Registrant must be the owner of the well and may be an individual, public or private corporation, company, partnership, firm, association, society, estate, trust, any other private organization or enterprise, the United States, any state, territory or country or a governmental entity, political subdivision or municipal corporation organized under or subject to the constitution and laws of this State.
2. If you own an existing irrigation well drilled at any time, or any other type of well drilled on or after June 20, 1968, you should have an assigned control and/or file number. Write these numbers in item 2. If you do not know the number, please explain the reason on the form or on an attached sheet.
3.
 - a. Fill in the Section, Township and Range in all cases if it is available.
 - b. If the well is in a subdivision and you have this information, give the subdivision name, Lot Number, and Address.
4. Show all purposes for which the water is used.
5. If the well is used for irrigation, give the number of acres irrigated in 1980 from the well.
6. If the owner of the land is an individual, give the last name, first name, middle initial. If the owner of the land is a corporation, partnership, firm, etc., fill in the appropriate title.
7. Complete the section on Well Data with the most accurate information available to you. If the data is not available, write N/A in the blanks.
8. Give the legal description of the place of use of the water. If place of use is in a subdivision and legal description is not available, give the subdivision name, Lot Number and/or address on the blank line.
9. The person in whose name a well is registered shall notify the Department of any change in ownership and shall keep all information on the registration record current and accurate. A form entitled "Change of Well Information/Ownership" is available for this purpose. A blank form will be furnished with the returned duplicate copy of the registration form.

DEPARTMENT OF WATER RESOURCES
99 EAST VIRGINIA AVENUE
PHOENIX, ARIZONA 85004

REGISTRATION OF EXISTING WELLS

READ INSTRUCTIONS ON BACK OF THIS FORM BEFORE COMPLETING
PRINT OR TYPE — FILE IN DUPLICATE

REGISTRATION FEE (CHECK ONE)
EXEMPT WELL (NO CHARGE) ☒
NON-EXEMPT WELL — \$10.00 ☐

ARIZONA
DEPT. OF

MAY -5 03:00

WATER
RECEIVED

FOR OFFICE USE ONLY
REGISTRATION NO. 55- 632794
FILE NO. D(3-14)40C
FILED MAY 05 1982 AT 3pm
(DATE) (TIME)
INA _____
AMA _____

1. Name of Registrant:

HEBBARD & WEBB CO.

5001 East Washington St. Phoenix Arizona 85034
(Address) (City) (State) (Zip)

2. File and/or Control Number under previous groundwater law:

N/A 35-
(File Number) (Control Number)

3. a. The well is located within the --- $\frac{1}{4}$ SW $\frac{1}{4}$ NE $\frac{1}{4}$, Section 4,
of Township 3S N/S, Range 14E E/W, G & SRB & M, in the
County of Pinal.

b. If in a subdivision: Name of subdivision N/A,
Lot No. _____, Address _____

4. The principal use(s) of water (Examples: irrigation - stockwater - domestic - municipal - industrial)
Stockwater - Domestic

5. If for irrigation use, number of acres irrigated from well _____

6. Owner of land on which well is located. If same as Item 1, check this box ☒

(Address) (City) (State) (Zip)

7. Well data (If data not available, write N/A) (HEADQUARTERS #3 - Inside Pasture)

- a. Depth of Well 392 feet
b. Diameter of casing 8 inches
c. Depth of casing 57 feet
d. Type of casing Galv. Steel
e. Maximum pump capacity 35 gallons per minute.
f. Depth to water 175 feet below land surface.
g. Date well completed May 1 1943
(Month) (Day) (Year)

8. The place(s) of use of water. If same as Item 3, check this box ☒.

--- $\frac{1}{4}$ --- $\frac{1}{4}$ --- $\frac{1}{4}$, Section _____ Township _____ Range _____
--- $\frac{1}{4}$ --- $\frac{1}{4}$ --- $\frac{1}{4}$, Section _____ Township _____ Range _____

Attach additional sheet if necessary.

9. DATE 5-4-82 SIGNATURE OF REGISTRANT

James M Webb
HEBBARD & WEBB CO. MICROFILMED

INSTRUCTIONS FOR COMPLETING REGISTRATION FORM

General Instructions

1. A person who owns an "Existing Well" shall register the well, pursuant to A.R.S. 45-593, by filing this form in duplicate with the Department of Water Resources not later than midnight June 14, 1982. The form must be completed and signed. Failure to do so will constitute a violation of A.R.S. 45-593, and may subject the well owner to injunction and/or civil penalties, pursuant to A.R.S. Title 45, Article 12.
2. An "Existing Well" means, (1) a well which was drilled on or before June 12, 1980 and which is not abandoned or sealed, or (2) a well which was not completed on or before June 12, 1980, but for which a Notice of Intention to Drill was on file with the Arizona Water Commission on or before June 12, 1980.
3. No registration fee is required for Exempt Wells. A \$10.00 registration fee must accompany registration forms for all Non-Exempt Wells.
4. An "Exempt Well" means a well having a pump with a maximum capacity of not more than 35 gallons per minute which is used to withdraw groundwater. An Exempt Well may include the non-commercial irrigation of not more than 1 acre of land.
5. A "Non-Exempt Well" means a well that is not an "Exempt Well".

INSTRUCTIONS FOR REGISTRATION QUESTIONS

1. The Registrant must be the owner of the well and may be an individual, public or private corporation, company, partnership, firm, association, society, estate, trust, any other private organization or enterprise, the United States, any state, territory or country or a governmental entity, political subdivision or municipal corporation organized under or subject to the constitution and laws of this State.
2. If you own an existing irrigation well drilled at any time, or any other type of well drilled on or after June 20, 1968, you should have an assigned control and/or file number. Write these numbers in item 2. If you do not know the number, please explain the reason on the form or on an attached sheet.
3.
 - a. Fill in the Section, Township and Range in all cases if it is available.
 - b. If the well is in a subdivision and you have this information, give the subdivision name, Lot Number, and Address.
4. Show all purposes for which the water is used.
5. If the well is used for irrigation, give the number of acres irrigated in 1980 from the well.
6. If the owner of the land is an individual, give the last name, first name, middle initial. If the owner of the land is a corporation, partnership, firm, etc., fill in the appropriate title.
7. Complete the section on Well Data with the most accurate information available to you. If the data is not available, write N/A in the blanks.
8. Give the legal description of the place of use of the water. If place of use is in a subdivision and legal description is not available, give the subdivision name, Lot Number and/or address on the blank line.
9. The person in whose name a well is registered shall notify the Department of any change in ownership and shall keep all information on the registration record current and accurate. A form entitled "Change of Well Information/Ownership" is available for this purpose. A blank form will be furnished with the returned duplicate copy of the registration form.

DEPARTMENT OF WATER RESOURCES
99 EAST VIRGINIA AVENUE
PHOENIX, ARIZONA 85004

REGISTRATION OF EXISTING WELLS

READ INSTRUCTIONS ON BACK OF THIS FORM BEFORE COMPLETING
PRINT OR TYPE - FILE IN DUPLICATE

REGISTRATION FEE (CHECK ONE)
EXEMPT WELL (NO CHARGE) ☒
NON-EXEMPT WELL - \$10.00 ☐

ARIZONA
DEPT. OF

82 MAY -5 1982

WATER
RESOURCES

48
FOR OFFICE USE ONLY
REGISTRATION NO. 35- 632795
FILE NO. D(3-14)40C
FILED MAY 05 1982 AT 3pm
INA
AMA

1. Name of Registrant:

HEBBARD & WEBB CO.

5001 East Washington St. Phoenix Arizona 84034
(Address) (City) (State) (Zip)

2. File and/or Control Number under previous groundwater law:

N/A 35-
(File Number) (Control Number)

3. a. The well is located within the --- ¼ SW ¼ NE ¼, Section 4, of Township 3S N/S, Range 14E E/W, G & SRB & M, in the County of Pinal.

b. If in a subdivision: Name of subdivision _____, Lot No. _____, Address _____.

4. The principal use(s) of water (Examples: irrigation - stockwater - domestic - municipal - industrial)
Stockwater - Domestic

5. If for irrigation use, number of acres irrigated from well _____.

6. Owner of land on which well is located. If same as Item 1, check this box ☒

(Address) (City) (State) (Zip)

7. Well data (If data not available, write N/A) (HEADQUARTERS #2 - On Hill)

a. Depth of Well 400 feet
b. Diameter of casing 8 inches
c. Depth of casing 34 feet
d. Type of casing Galv. Steel
e. Maximum pump capacity 35 gallons per minute.
f. Depth to water 231 feet below land surface.
g. Date well completed September 1 1941
(Month) (Day) (Year)

8. The place(s) of use of water. If same as Item 3, check this box ☒.

¼ ¼ ¼, Section Township Range
¼ ¼ ¼, Section Township Range

Attach additional sheet if necessary.

9. DATE 5-4-82 SIGNATURE OF REGISTRANT James M Webb
HEBBARD & WEBB CO.

MICROFILMED

INSTRUCTIONS FOR COMPLETING REGISTRATION FORM

General Instructions

1. A person who owns an "Existing Well" shall register the well, pursuant to A.R.S. 45-593, by filing this form in duplicate with the Department of Water Resources not later than midnight June 14, 1982. The form must be completed and signed. Failure to do so will constitute a violation of A.R.S. 45-593, and may subject the well owner to injunction and/or civil penalties, pursuant to A.R.S. Title 45, Article 12.
2. An "Existing Well" means, (1) a well which was drilled on or before June 12, 1980 and which is not abandoned or sealed, or (2) a well which was not completed on or before June 12, 1980, but for which a Notice of Intention to Drill was on file with the Arizona Water Commission on or before June 12, 1980.
3. No registration fee is required for Exempt Wells. A \$10.00 registration fee must accompany registration forms for all Non-Exempt Wells.
4. An "Exempt Well" means a well having a pump with a maximum capacity of not more than 35 gallons per minute which is used to withdraw groundwater. An Exempt Well may include the non-commercial irrigation of not more than 1 acre of land.
5. A "Non-Exempt Well" means a well that is not an "Exempt Well".

INSTRUCTIONS FOR REGISTRATION QUESTIONS

1. The Registrant must be the owner of the well and may be an individual, public or private corporation, company, partnership, firm, association, society, estate, trust, any other private organization or enterprise, the United States, any state, territory or country or a governmental entity, political subdivision or municipal corporation organized under or subject to the constitution and laws of this State.
2. If you own an existing irrigation well drilled at any time, or any other type of well drilled on or after June 20, 1968, you should have an assigned control and/or file number. Write these numbers in item 2. If you do not know the number, please explain the reason on the form or on an attached sheet.
3.
 - a. Fill in the Section, Township and Range in all cases if it is available.
 - b. If the well is in a subdivision and you have this information, give the subdivision name, Lot Number, and Address.
4. Show all purposes for which the water is used.
5. If the well is used for irrigation, give the number of acres irrigated in 1980 from the well.
6. If the owner of the land is an individual, give the last name, first name, middle initial. If the owner of the land is a corporation, partnership, firm, etc., fill in the appropriate title.
7. Complete the section on Well Data with the most accurate information available to you. If the data is not available, write N/A in the blanks.
8. Give the legal description of the place of use of the water. If place of use is in a subdivision and legal description is not available, give the subdivision name, Lot Number and/or address on the blank line.
9. The person in whose name a well is registered shall notify the Department of any change in ownership and shall keep all information on the registration record current and accurate. A form entitled "Change of Well Information/Ownership" is available for this purpose. A blank form will be furnished with the returned duplicate copy of the registration form.

DEPARTMENT OF WATER RESOURCES
99 EAST VIRGINIA AVENUE
PHOENIX, ARIZONA 85004

REGISTRATION OF EXISTING WELLS

READ INSTRUCTIONS ON BACK OF THIS FORM BEFORE COMPLETING
PRINT OR TYPE - FILE IN DUPLICATE

ARIZONA
DEPT. OF
WATER
RESOURCES

REGISTRATION FEE (CHECK ONE)
EXEMPT WELL (NO CHARGE) ☒ **82 MAY -5 13:00**
NON-EXEMPT WELL - \$10.00 ☐

48
FOR OFFICE USE ONLY
REGISTRATION NO. 55- 632796
FILE NO. D(3-14)40C
FILED MAY 05 1982 AT 3pm
(DATE) (TIME)
INA _____
AMA _____

1. Name of Registrant:
HEBBARD & WEBB CO.
5001 East Washington St. Phoenix Arizona 84034
(Address) (City) (State) (Zip)
2. File and/or Control Number under previous groundwater law:
N/A 35-
(File Number) (Control Number)
3. a. The well is located within the --- $\frac{1}{4}$ SW $\frac{1}{4}$ NE $\frac{1}{4}$, Section 4,
of Township 3S N/S, Range 14E E/W, G & SRB & M, in the
County of Pinal.
b. If in a subdivision: Name of subdivision N/A,
Lot No. _____, Address _____
4. The principal use(s) of water (Examples: irrigation - stockwater - domestic - municipal - industrial)
Stockwater - Domestic
5. If for irrigation use, number of acres irrigated from well _____
6. Owner of land on which well is located. If same as Item 1, check this box ☒

(Address) (City) (State) (Zip)
7. Well data (If data not available, write N/A) (HEADQUARTERS #1)
a. Depth of Well 400 feet
b. Diameter of casing 6 inches
c. Depth of casing 70 feet
d. Type of casing Galv. Steel
e. Maximum pump capacity 35 gallons per minute.
f. Depth to water 172 feet below land surface.
g. Date well completed June 1 1936.
(Month) (Day) (Year)
8. The place(s) of use of water. If same as Item 3, check this box ☒
--- $\frac{1}{4}$ --- $\frac{1}{4}$ --- $\frac{1}{4}$, Section _____ Township _____ Range _____
--- $\frac{1}{4}$ --- $\frac{1}{4}$ --- $\frac{1}{4}$, Section _____ Township _____ Range _____
- Attach additional sheet if necessary.
9. DATE 5-4-82 SIGNATURE OF REGISTRANT James M Webb
HEBBARD & WEBB CO.

MICROFILMED

INSTRUCTIONS FOR COMPLETING REGISTRATION FORM

General Instructions

1. A person who owns an "Existing Well" shall register the well, pursuant to A.R.S. 45-593, by filing this form in duplicate with the Department of Water Resources not later than midnight June 14, 1982. The form must be completed and signed. Failure to do so will constitute a violation of A.R.S. 45-593, and may subject the well owner to injunction and/or civil penalties, pursuant to A.R.S. Title 45, Article 12.
2. An "Existing Well" means, (1) a well which was drilled on or before June 12, 1980 and which is not abandoned or sealed, or (2) a well which was not completed on or before June 12, 1980, but for which a Notice of Intention to Drill was on file with the Arizona Water Commission on or before June 12, 1980.
3. No registration fee is required for Exempt Wells. A \$10.00 registration fee must accompany registration forms for all Non-Exempt Wells.
4. An "Exempt Well" means a well having a pump with a maximum capacity of not more than 35 gallons per minute which is used to withdraw groundwater. An Exempt Well may include the non-commercial irrigation of not more than 1 acre of land.
5. A "Non-Exempt Well" means a well that is not an "Exempt Well".

INSTRUCTIONS FOR REGISTRATION QUESTIONS

1. The Registrant must be the owner of the well and may be an individual, public or private corporation, company, partnership, firm, association, society, estate, trust, any other private organization or enterprise, the United States, any state, territory or country or a governmental entity, political subdivision or municipal corporation organized under or subject to the constitution and laws of this State.
2. If you own an existing irrigation well drilled at any time, or any other type of well drilled on or after June 20, 1968, you should have an assigned control and/or file number. Write these numbers in item 2. If you do not know the number, please explain the reason on the form or on an attached sheet.
3.
 - a. Fill in the Section, Township and Range in all cases if it is available.
 - b. If the well is in a subdivision and you have this information, give the subdivision name, Lot Number, and Address.
4. Show all purposes for which the water is used.
5. If the well is used for irrigation, give the number of acres irrigated in 1980 from the well.
6. If the owner of the land is an individual, give the last name, first name, middle initial. If the owner of the land is a corporation, partnership, firm, etc., fill in the appropriate title.
7. Complete the section on Well Data with the most accurate information available to you. If the data is not available, write N/A in the blanks.
8. Give the legal description of the place of use of the water. If place of use is in a subdivision and legal description is not available, give the subdivision name, Lot Number and/or address on the blank line.
9. The person in whose name a well is registered shall notify the Department of any change in ownership and shall keep all information on the registration record current and accurate. A form entitled "Change of Well Information/Ownership" is available for this purpose. A blank form will be furnished with the returned duplicate copy of the registration form.

DEPARTMENT OF WATER RESOURCES
99 EAST VIRGINIA AVENUE
PHOENIX, ARIZONA 85004

REGISTRATION OF EXISTING WELLS

READ INSTRUCTIONS ON BACK OF THIS FORM BEFORE COMPLETING
PRINT OR TYPE — FILE IN DUPLICATE

REGISTRATION FEE (CHECK ONE)
EXEMPT WELL (NO CHARGE) ☒
NON-EXEMPT WELL — \$10.00 ☐

ARIZONA
DEPT. OF

MAY -5 1982

WATER
RESOURCES

48
FOR OFFICE USE ONLY
REGISTRATION NO. 55- 632800
FILE NO. D(3-14)10dc
FILED MAY 05 1982 AT 3pm
(DATE) (TIME)
INA _____
AMA _____

1. Name of Registrant:
HEBBARD & WEBB CO.
5001 East Washington St. Phoenix Arizona 84034
(Address) (City) (State) (Zip)
2. File and/or Control Number under previous groundwater law:
N/A 35-
(File Number) (Control Number)
3. a. The well is located within the --- 1/4 SW 1/4 SE 1/4, Section 10,
of Township 3S N/S, Range 14E E/W, G & SRB & M, in the
County of Gila.
b. If in a subdivision: Name of subdivision N/A,
Lot No. _____, Address _____
4. The principal use(s) of water (Examples: irrigation - stockwater - domestic - municipal - industrial)
Stockwater
5. If for irrigation use, number of acres irrigated from well _____
6. Owner of land on which well is located. If same as Item 1, check this box ☒

(Address) (City) (State) (Zip)
7. Well data (If data not available, write N/A) (LOWER WELL)
a. Depth of Well 250 feet
b. Diameter of casing 8 inches
c. Depth of casing 250 feet
d. Type of casing Galv. Steel
e. Maximum pump capacity 35 gallons per minute.
f. Depth to water 74 feet below land surface.
g. Date well completed May 1 1940.
(Month) (Day) (Year)
8. The place(s) of use of water. If same as Item 3, check this box ☒
1/4 1/4 1/4, Section _____ Township _____ Range _____
1/4 1/4 1/4, Section _____ Township _____ Range _____
Attach additional sheet if necessary.
9. DATE 5-4-82 SIGNATURE OF REGISTRANT James M. Webb
HEBBARD & WEBB CO.

MICROFILMED

INSTRUCTIONS FOR COMPLETING REGISTRATION FORM

General Instructions

1. A person who owns an "Existing Well" shall register the well, pursuant to A.R.S. 45-593, by filing this form in duplicate with the Department of Water Resources not later than midnight June 14, 1982. The form must be completed and signed. Failure to do so will constitute a violation of A.R.S. 45-593, and may subject the well owner to injunction and/or civil penalties, pursuant to A.R.S. Title 45, Article 12.
2. An "Existing Well" means, (1) a well which was drilled on or before June 12, 1980 and which is not abandoned or sealed, or (2) a well which was not completed on or before June 12, 1980, but for which a Notice of Intention to Drill was on file with the Arizona Water Commission on or before June 12, 1980.
3. No registration fee is required for Exempt Wells. A \$10.00 registration fee must accompany registration forms for all Non-Exempt Wells.
4. An "Exempt Well" means a well having a pump with a maximum capacity of not more than 35 gallons per minute which is used to withdraw groundwater. An Exempt Well may include the non-commercial irrigation of not more than 1 acre of land.
5. A "Non-Exempt Well" means a well that is not an "Exempt Well".

INSTRUCTIONS FOR REGISTRATION QUESTIONS

1. The Registrant must be the owner of the well and may be an individual, public or private corporation, company, partnership, firm, association, society, estate, trust, any other private organization or enterprise, the United States, any state, territory or country or a governmental entity, political subdivision or municipal corporation organized under or subject to the constitution and laws of this State.
2. If you own an existing irrigation well drilled at any time, or any other type of well drilled on or after June 20, 1968, you should have an assigned control and/or file number. Write these numbers in item 2. If you do not know the number, please explain the reason on the form or on an attached sheet.
3.
 - a. Fill in the Section, Township and Range in all cases if it is available.
 - b. If the well is in a subdivision and you have this information, give the subdivision name, Lot Number, and Address.
4. Show all purposes for which the water is used.
5. If the well is used for irrigation, give the number of acres irrigated in 1980 from the well.
6. If the owner of the land is an individual, give the last name, first name, middle initial. If the owner of the land is a corporation, partnership, firm, etc., fill in the appropriate title.
7. Complete the section on Well Data with the most accurate information available to you. If the data is not available, write N/A in the blanks.
8. Give the legal description of the place of use of the water. If place of use is in a subdivision and legal description is not available, give the subdivision name, Lot Number and/or address on the blank line.
9. The person in whose name a well is registered shall notify the Department of any change in ownership and shall keep all information on the registration record current and accurate. A form entitled "Change of Well Information/Ownership" is available for this purpose. A blank form will be furnished with the returned duplicate copy of the registration form.



ARIZONA DEPARTMENT OF WATER RESOURCES
Records Management Section
500 N. 3rd Street * Phoenix, Arizona 85004
(602) 417-2405 * (800) 352-8488
www.water.az.gov

Well Driller Report and Well Log

This report should be prepared by the driller in detail and filed with the Department within 30 days following completion of the well.

**** PLEASE PRINT CLEARLY ****

MAR - 7 2006

FILE NUMBER

D(3-14) 11 ABB

WELL REGISTRATION NUMBER

55-205266

PERMIT NUMBER (IF ISSUED)

SECTION 1. DRILLING AUTHORIZATION

Drilling Firm

NAME

MIDWAY TRADING COMPANY

ADDRESS

P.O. BOX 1119

CITY/STATE/ZIP

TONTO BASIN, AZ 85553

DWR LICENSE NUMBER

642

TELEPHONE NUMBER

520-356-7131

FAX

COMPLETED MAR 14 2006

SECTION 2. REGISTRY INFORMATION

Well Owner

FULL NAME OF COMPANY, ORGANIZATION OR INDIVIDUAL

WEBB CATTLE CO

MAILING ADDRESS

1401 N 24TH ST STE 1

CITY / STATE / ZIP

PHOENIX, AZ 85008

CONTACT PERSON NAME AND TITLE

TELEPHONE NUMBER

602-275-5715

FAX

WELL NAME

Location of Well

WELL LOCATION ADDRESS (IF KNOWN)

TOWNSHIP (N/S)	RANGE (E/W)	SECTION	160 ACRE	40 ACRE	10 ACRE
35	14E	11	NE 1/4	NW 1/4	NW 1/4
LATITUDE			LONGITUDE		
° ' " N			° ' " W		

LAND SURFACE ELEVATION AT WELL

Feet Above Sea Level

METHOD OF LATITUDE / LONGITUDE (CHECK ONE)

☐ USGS Quad Map ☐ Conventional Survey ☐ GPS: ☐ Hand-Held ☐ Survey-Grade

COUNTY ASSESSOR'S PARCEL ID NUMBER

BOOK 102 MAP 35 PARCEL 001

COUNTY WHERE WELL IS LOCATED

Gila

SECTION 3. WELL CONSTRUCTION DETAILS

Drill Method

CHECK ONE

- ☐ Air Rotary
☐ Bored or Augered
☒ Cable Tool
☐ Dual Rotary
☐ Mud Rotary
☐ Reverse Circulation
☐ Driven
☐ Jetted
☐ Air Percussion / Odex Tubing
☐ Other (please specify)

Method of Well Development

CHECK ONE

- ☐ Airlift
☒ Bail
☐ Surge Back
☐ Surge Pump
☐ Other (please specify)

Condition of Well

CHECK ONE

- ☒ Capped
☐ Pump Installed

Method of Sealing at Reduction Points

CHECK ONE

- ☒ None
☐ Packed
☐ Swedged
☐ Welded
☐ Other (please specify)

Condition of Well

DATE WELL CONSTRUCTION STARTED

1-16-05

DATE WELL CONSTRUCTION COMPLETED

2-1-05

I state that this notice is filed in compliance with A.R.S. §45-596 and is complete and correct to the best of my knowledge and belief.

DRILLING FIRM

Midway Trading Co.

SIGNATURE OF QUALIFYING PARTY

James E. Burt

DATE

3-21-06

Well Driller Report and Well Log

WELL REGISTRATION NUMBER

55- 205266

SECTION 4. WELL CONSTRUCTION DESIGN (AS BUILT) (attach additional page if needed)

DEPTH OF BORING

230

Feet Below Land Surface

DEPTH OF COMPLETED WELL

230

Feet Below Land Surface

Water Level Information

STATIC WATER LEVEL

180

Feet Below Land Surface

DATE MEASURED

2-1-05

TIME MEASURED

IF FLOWING WELL, METHOD OF FLOW REGULATION

☐ Valve☐ Other: _____[illegible]

Installed Annular Material

[illegible]

Well Driller Report and Well Log

WELL REGISTRATION NUMBER

55- 205266

SECTION 5. GEOLOGIC LOG OF WELL

[illegible]

Well Driller Report and Well Log

WELL REGISTRATION NUMBER

55- 205266

SECTION 6. WELL SITE PLAN

NAME OF WELL OWNER

WEBB CATTLE CO

COUNTY ASSESSOR'S PARCEL ID NUMBER

BOOK

102

MAP

35

PARCEL

001

- * Please draw the following: (1) the boundaries of property on which the well was located; (2) the proposed well location; (3) the locations of all septic tank systems and sewer systems on the property or within 100 feet of the well location, even if on neighboring properties; and (4) any permanent structures on the property that may aid in locating the well.
- * Please indicate the distance between the well location and any septic tank system or sewer system.



1" = _____ ft

VACANT
LAND

ARIZONA DEPARTMENT OF WATER RESOURCES
GROUNDWATER MANAGEMENT SUPPORT SECTION

500 North Third Street
Phoenix, Arizona 85004

THIS AUTHORIZATION SHALL BE IN POSSESSION OF THE DRILLER DURING ALL DRILL OPERATIONS

WELL REGISTRATION NO: 55-205266 *Skunk Camp*

AUTHORIZED DRILLER: MIDWAY TRADING COMPANY

LICENSE NO: 642

NOTICE OF INTENTION TO DRILL AN EXEMPT WELL(S) HAS BEEN FILED WITH THE DEPARTMENT BY:

WELL OWNER: WEBB CATTLE CO 1401 N 24TH ST STE 1 PHOENIX, AZ 85008

The well(s) is/are to be located in the:

NW ¼ of the NW ¼ of the NE ¼ Section 11 Township 3 SOUTH Range 14 EAST

No. of wells in this project: 1 Assessor Parcel No: 102-35-001

THIS AUTHORIZATION EXPIRES AT MIDNIGHT ON THE 23RD DAY OF SEPTEMBER, 2005

Shannon L. Peep
GROUNDWATER MANAGEMENT SUPPORT

THE DRILLER MUST FILE A LOG OF THE WELL
WITHIN 30 DAYS OF COMPLETION OF DRILLING





Water Management Support Section
P.O. Box 458 • Phoenix, Arizona 85001-0458
(602) 417-2470 • (800) 352-8488
www.water.az.gov

**Notice of Intent to
Drill, Deepen, Replace or Modify a Well**
(except a Non-Exempt Well in an Active Management Area)

3150 OF
\$88 FEE

- Review instructions prior to completing form in black or blue ink.
- You must include with your Notice:
- Check or money order in the amount of the appropriate filing fee. For a well located within an AMA or INA, the fee is \$150.00. For a well not located within an AMA or INA, the fee is \$50.00 if the well will be used solely for domestic purposes (see page 2 and instructions) and will have a pump with a maximum capacity of not more than 35 gallons per minute. Otherwise, the fee is \$150.00.
- Authority for fee: A.R.S. § 45-596.

**** PLEASE PRINT CLEARLY ****

AMA / INA	B	SB	
RECEIVED	DATE	WS	
9-24-04	09	15	
ISSUED	DATE	WOARF	CERCLA
9-28-04			

FILE NUMBER
D(3-14)11A88
WELL REGISTRATION NUMBER
55-205266

SECTION 1. COUNTY OR LOCAL HEALTH AUTHORITY ENDORSEMENT (if applicable)

If water from the proposed well will be used for domestic purposes on a parcel of land of 5 or fewer acres, the applicable county or local health authority must endorse all items in Section 1 before submission to the Department of Water Resources. You must also attach a site plan (see instructions).

CHECK ONE

- ☐ County or Local Health Authority Recommends Approval (pursuant to A.R.S. § 45-596 (G) and (F))
 - ☐ Field Inspection Performed
 - ☐ Site Plan Review Only
- ☐ Insufficient Information to Make a Determination

Official County or Local Seal or Stamp

COUNTY OR LOCAL AUTHORITY NAME AND TITLE

TELEPHONE NUMBER

DATE

COUNTY OR LOCAL AUTHORITY SIGNATURE

SECTION 2. REGISTRY INFORMATION

Well Type CHECK ONE <input checked="" type="checkbox"/> Exempt (Pump has a maximum capacity of not more than 35 gpm and water is not used for irrigation purposes inside an AMA.) (See instructions.) <input type="checkbox"/> Non-Exempt (Pump has a maximum capacity of more than 35 gpm or water is used for irrigation purposes inside an AMA.) (See instructions.)	Proposed Action CHECK ONE <input checked="" type="checkbox"/> Drill New Well <input type="checkbox"/> Deepen <input type="checkbox"/> Replace <input type="checkbox"/> Modify If Deepening, Replacing or Modifying: ORIGINAL WELL REGISTRATION NUMBER 55-632801 MAXIMUM CAPACITY OF ORIGINAL WELL 35 Gallons Per Minute	Location of Well WELL LOCATION ADDRESS (IF ANY) TOWNSHIP (NS) RANGE (EW) SECTION 160 ACRE 40 ACRE 10 ACRE 3S 14E 11 NE 1/4 NW 1/4 NW 1/4 COUNTY ASSESSOR'S PARCEL ID NUMBER BOOK MAP PARCEL # OF ACRES 102 35 001 80 PLACE OF WATER USE (ONLY IF DIFFERENT FROM LOCATION OF WELL) TOWNSHIP (NS) RANGE (EW) SECTION 160 ACRE 40 ACRE 10 ACRE 1/4 1/4 1/4 COUNTY WHERE WELL IS LOCATED Gila
DESIGN PUMP CAPACITY 15 Gallons Per Minute	DISTANCE & DIRECTION FROM ORIGINAL WELL 20 Feet West	

SECTION 3. OWNER INFORMATION

Well Owner FULL NAME OF COMPANY, ORGANIZATION, OR INDIVIDUAL WEBB CATTLE CO. MAILING ADDRESS 1401 N 24th St. Suite 1 CITY / STATE / ZIP CODE Phx, AZ 85008 CONTACT PERSON NAME AND TITLE Jim Webb, President TELEPHONE NUMBER 602 275 5715 FAX 602-244-1340	Landowner (if different from Well Owner) FULL NAME OF COMPANY, GOVERNMENT AGENCY, OR INDIVIDUAL MAILING ADDRESS CITY / STATE / ZIP CODE CONTACT PERSON NAME AND TITLE TELEPHONE NUMBER FAX
--	---

SECTION 4.

Questions	Yes	No	If Yes:
1. Is the proposed well site within 100 feet of a septic tank system, sewer disposal area, landfill, hazardous materials or petroleum storage area or tank?		X	You must also request a variance (A.A.C. R12-15-818).
2. Is there another well name or identification number associated with this well?		X	PLEASE STATE
3. Is the proposed well the second exempt well on this parcel for the same use?	X		If the proposed well is in an Active Management Area, you must also file a supplemental form 55-40A. NOT IN AREA

Notice of Intent to Drill, Deepen, Replace or Modify a Well

WELL REGISTRATION NUMBER
55-205204

SECTION 5. DRILLING AUTHORIZATION SECTION 6. WATER / SITE INFORMATION

Drilling Firm		Principal Use of Water		Other Uses of Water	
NAME <i>Midway Trading Co.</i>		CHECK ONE		CHECK ALL THAT APPLY	
DWR LICENSE NUMBER <i>642</i>	ROC LICENSE CATEGORY <i>K-53</i>	<input type="checkbox"/> Irrigation <input type="checkbox"/> Utility <input type="checkbox"/> Commercial <input type="checkbox"/> Domestic <input type="checkbox"/> Municipal <input type="checkbox"/> Industrial <input type="checkbox"/> Mining <input type="checkbox"/> Stock <input type="checkbox"/> Recharge <input type="checkbox"/> Dewatering <input checked="" type="checkbox"/> Other (please specify): <i>Livestock</i>		<input type="checkbox"/> Irrigation <input type="checkbox"/> Utility <input type="checkbox"/> Commercial <input type="checkbox"/> Domestic <input type="checkbox"/> Municipal <input type="checkbox"/> Industrial <input type="checkbox"/> Mining <input type="checkbox"/> Stock <input type="checkbox"/> Recharge <input type="checkbox"/> Dewatering <input type="checkbox"/> Other (please specify):	
TELEPHONE NUMBER <i>928-479-2106</i>		FAX <i>same</i>			
MAILING ADDRESS <i>P.O. Box 1119</i>					
CITY / STATE / ZIP CODE <i>Tonto Basin Az. 85553</i>					

RECEIVED
SEP 24 2004

SECTION 7. PROPOSED WELL CONSTRUCTION DESIGN (attach separate sheet if needed) DATE CONSTRUCTION IS TO BEGIN *OCT 2004*

Borehole			Casing														
DEPTH FROM SURFACE		BOREHOLE DIAMETER (inches)	DEPTH FROM SURFACE		OUTER DIAMETER (inches)	MATERIAL TYPE (T)				PERFORATION TYPE (T)					GROUTING MATERIAL		
FROM (feet)	TO (feet)		FROM (feet)	TO (feet)		STEEL	PVC	ABS	IF OTHER TYPE, DESCRIBE	BLANK OR NONE	WIRE WRAP	SHUTTER SCREEN	M/LS KNIFE	SLOTTED		IF OTHER TYPE, DESCRIBE	
0	400	8				X*											Cement
0	20	12	0	20	6	X											11
20	300	8				X				X							
300	400	8				X							X				

* ADWR well construction standards require a surface seal consisting of a minimum of 20 feet of steel casing. Cement grout must be used to fill the annular space between the surface casing and the borehole. (A.A.C. R12-15-811(B))

The Department's issuance of an authorization to drill a well is not a determination of whether water withdrawn from the well is legally surface water or groundwater. The legal nature of the water withdrawn from the well may be the subject of court action in the future as part of a determination of surface water rights in your area. If there are court proceedings that could affect your well, you will be notified and be given the opportunity to participate. If you have questions regarding the legal nature of the water to be withdrawn from your proposed well, please consult with an experienced civil engineer, hydrologist or water rights attorney.

For the purposes of determining appropriate fees outside AMAs or INAs, "domestic purposes" is defined as "uses related to the supply, service and activities of households and private residences and includes the application of water to less than 2 acres of land to produce plants or parts of plants for sale or human consumption, or for use as feed for livestock, range livestock or poultry, as such terms are defined in A.R.S. § 3-1201."

I state that this notice is filed in compliance with A.R.S. § 45-596 and is complete and correct to the best of my knowledge and belief.

TYPE OR PRINT NAME AND TITLE <i>JAMES M. WEBB President Webb Cattle Co.</i>	
SIGNATURE OF WELL OWNER OR LANDOWNER <i>James M. Webb</i>	DATE <i>9-24-04</i>



(602) 417-2470 • (800) 352-8488

www.water.az.gov

SEP 24 2004

- Review instructions prior to completing form in black or blue ink.
- You must include with your Notice:
- Check or money order in the amount of the appropriate filing fee. For a well located within an AMA or INA, the fee is \$150.00. For a well not located within an AMA or INA, the fee is \$50.00 if the well will be used solely for domestic purposes (see page 2 and instructions) and will have a pump with a maximum capacity of not more than 35 gallons per minute. Otherwise, the fee is \$150.00.
- Authority for fee: A.R.S. § 45-596.

** PLEASE PRINT CLEARLY **

Drill, deepen, replace or modify a well
(except a Non-Exempt Well in an Active Management Area)

AMA / INA	B	SB
RECEIVED	DATE	WS
ISSUED	DATE	WCARF CERCLA

FILE NUMBER
WELL REGISTRATION NUMBER
55-

SECTION 1. COUNTY OR LOCAL HEALTH AUTHORITY ENDORSEMENT (if applicable)

If water from the proposed well will be used for domestic purposes on a parcel of land of 5 or fewer acres, the applicable county or local health authority must endorse all items in Section 1 before submission to the Department of Water Resources. You must also attach a site plan (see instructions).

CHECK ONE

- ☐ County or Local Health Authority Recommends Approval
(pursuant to A.R.S. § 45-596 (G) and (F))
- ☐ Field Inspection Performed
- ☐ Site Plan Review Only
- ☐ Insufficient Information to Make a Determination

Official County or Local Seal or Stamp

COUNTY OR LOCAL AUTHORITY NAME AND TITLE

TELEPHONE NUMBER

DATE

COUNTY OR LOCAL AUTHORITY SIGNATURE

SECTION 2. REGISTRY INFORMATION

Well Type

CHECK ONE

☒ Exempt

Pump has a maximum capacity of not more than 35 gpm and water is not used for irrigation purposes inside an AMA. (See instructions.)

☐ Non-Exempt

Pump has a maximum capacity of more than 35 gpm or water is used for irrigation purposes inside an AMA. (See instructions.)

DESIGN PUMP CAPACITY

15 Gallons Per Minute

Proposed Action

CHECK ONE

☒ Drill New Well☐ Deepen☐ Replace☐ Modify

If Deepening, Replacing or Modifying:

ORIGINAL WELL REGISTRATION NUMBER

55-632801

MAXIMUM CAPACITY OF ORIGINAL WELL

35 Gallons Per Minute

DISTANCE & DIRECTION FROM ORIGINAL WELL

20 Feet West

Location of Well

WELL LOCATION ADDRESS (IF ANY)

TOWNSHIP (N/S)	RANGE (E/W)	SECTION	160 ACRE	40 ACRE	10 ACRE
3S	14E	11	NE 1/4	NW 1/4	NW 1/4

COUNTY ASSESSOR'S PARCEL ID NUMBER

BOOK	MAP	PARCEL	# OF ACRES
102	35	001	80

PLACE OF WATER USE (ONLY IF DIFFERENT FROM LOCATION OF WELL)

TOWNSHIP (N/S)	RANGE (E/W)	SECTION	160 ACRE	40 ACRE	10 ACRE
			1/4	1/4	1/4

COUNTY WHERE WELL IS LOCATED

Gila

SECTION 3. OWNER INFORMATION

Well Owner

FULL NAME OF COMPANY, ORGANIZATION, OR INDIVIDUAL

WEBB CATTLE CO.

MAILING ADDRESS

1401 N 24th St. Suite 1

Landowner (if different from Well Owner)

FULL NAME OF COMPANY, GOVERNMENT AGENCY, OR INDIVIDUAL

MAILING ADDRESS

CITY / STATE / ZIP CODE

JM WEBB LIVESTOCK

1401 N. 24TH ST., SUITE 1 PH. (602) 275-5715
PHOENIX, AZ 85008-4618BANK ONE, NA
PHOENIX, ARIZONA 85073
91-2-1221

1502

9-24-2004
DATEAMOUNT
\$ 150.00

PAY One Hundred Fifty and 00/100 Dollars

O THE
ORDER
OF

ADWR

New Well at Shunk Camp

Details on back
Security Features Included

ARIZONA DEPARTMENT OF WATER RESOURCES

500 North 3rd Street, Phoenix, Arizona 85004

Telephone (602) 417-2470

Fax (602) 417-2422

September 28, 2004



Janet Napolitano
Governor

Herb Guenther
Director

WEBB CATTLE CO
1401 N 24TH ST STE 1
PHOENIX, AZ 85008

Registration No. 55-205266
File No. D(3-14) 11 ABB

Dear Well Owner:

Enclosed is a copy of the Notice of Intention (NOI) to Drill a well that you recently filed with this Department pursuant to A.R.S. § 45-596. This is to inform you that the Department has approved the NOI and has mailed or otherwise provided a drilling card authorizing the drilling of the well to the well driller identified in the NOI. The driller may not begin drilling until he has received the drilling card, which must be displayed on the drill rig during drilling.

Well drilling activities must be completed within one year after the date the NOI was filed with the Department. If drilling is not completed within one year, you must file a new NOI before proceeding with further drilling. If in the course of drilling the well, it is determined that the well cannot be successfully completed as initially intended (dry hole, cave in, lost tools, etc.), the well must be properly abandoned and a Well Abandonment Completion Report must be filed as required by A.A.C. R12-15-816(F).

If you change drillers, you must notify the Department of the new driller's identity. Please ensure that the new driller is licensed by the Department to drill the type of well you require. A new driller may not begin drilling until he receives a new drilling card from the Department. If you are drilling a new or replacement well and it is necessary to change the location of the proposed well, you may not proceed with drilling until you file an amended NOI with the Department and the Department issues an amended drilling card to the driller. If county approval was required for the original well site plan (this applies to domestic wells on parcels that are five acres or less), you must submit a new well site plan with the new well location to your local county health authority for approval prior to filing the amended NOI with the Department.

A.R.S. § 45-600 requires the registered well owner to complete and file a Pump Installation Completion Report form (DWR form 55-56) within 30 days after the installation of pumping equipment. A form is enclosed for your use. Also enclosed is a well owner's guide that provides useful information and advice concerning your upcoming well construction project. A.R.S. § 45-600 also requires the driller to file a complete and accurate Well Drillers Report and Well Log (DWR form 55-55) within 30 days after completion of drilling. That form was mailed to your driller with the drilling card. You should insist and ensure that all of the required forms are accurately completed and timely filed with the Department.

Please be advised that A.R.S. § 45-593(C) requires the person to whom a well is registered to notify the Department of a change in ownership of the well and/or information pertaining to the physical characteristics of the well in order to keep this well registration file current and accurate. Any change in well information or a request to change well driller must be filed on a Request to Change Well Information form (DWR form 55-71A) that may be downloaded from the ADWR Internet website at <http://www.water.az.gov/adwr/content/forms/default.htm#NOI>.

Sincerely,

Monica Ortiz
NOI Unit
Water Management Support Section

Enclosures

DEPARTMENT OF WATER RESOURCES
99 EAST VIRGINIA AVENUE
PHOENIX, ARIZONA 85004

REGISTRATION OF EXISTING WELLS

READ INSTRUCTIONS ON BACK OF THIS FORM BEFORE COMPLETING
PRINT OR TYPE - FILE IN DUPLICATE

REGISTRATION FEE (CHECK ONE)
EXEMPT WELL (NO CHARGE) ☒
NON-EXEMPT WELL - \$10.00 ☐

ARIZONA
DEPT. OF

MAY -5 1982

WATER
RESOURCES

FOR OFFICE USE ONLY

REGISTRATION NO. 55- 632798

FILE NO. D13-1471105

FILED MAY 05 1982 AT 3pm
(DATE) (TIME)

INA _____

AMA _____

1. Name of Registrant:

HEBBARD & WEBB CO.

5001 East Washington St. Phoenix Arizona 85034
(Address) (City) (State) (Zip)

2. File and/or Control Number under previous groundwater law:

N/A 35-
(File Number) (Control Number)

3. a. The well is located within the --- $\frac{1}{4}$ NW $\frac{1}{4}$ NE $\frac{1}{4}$, Section 11,
of Township 3S N/S, Range 14E E/W, G & SRB & M, in the
County of Gila.

b. If in a subdivision: Name of subdivision N/A,
Lot No. _____, Address _____

4. The principal use(s) of water (Examples: irrigation - stockwater - domestic - municipal - industrial)
Stockwater

5. If for irrigation use, number of acres irrigated from well _____

6. Owner of land on which well is located. If same as Item 1, check this box ☒

(Address) (City) (State) (Zip)

7. Well data (If data not available, write N/A) (SKUNK CAMP WELL #1)

a. Depth of Well 300 feet
b. Diameter of casing 6 inches
c. Depth of casing 50 feet
d. Type of casing Galv. Steel
e. Maximum pump capacity 35 gallons per minute.
f. Depth to water 165 feet below land surface.
g. Date well completed April 1 1947
(Month) (Day) (Year)

8. The place(s) of use of water. If same as Item 3, check this box ☒.

--- $\frac{1}{4}$ --- $\frac{1}{4}$ --- $\frac{1}{4}$, Section _____ Township _____ Range _____
--- $\frac{1}{4}$ --- $\frac{1}{4}$ --- $\frac{1}{4}$, Section _____ Township _____ Range _____

Attach additional sheet if necessary.

9. DATE 5-4-82 SIGNATURE OF REGISTRANT

James M. Webb
HEBBARD & WEBB CO.

MICROFILMED

INSTRUCTIONS FOR COMPLETING REGISTRATION FORM

General Instructions

1. A person who owns an "Existing Well" shall register the well, pursuant to A.R.S. 45-593, by filing this form in duplicate with the Department of Water Resources not later than midnight June 14, 1982. The form must be completed and signed. Failure to do so will constitute a violation of A.R.S. 45-593, and may subject the well owner to injunction and/or civil penalties, pursuant to A.R.S. Title 45, Article 12.
2. An "Existing Well" means, (1) a well which was drilled on or before June 12, 1980 and which is not abandoned or sealed, or (2) a well which was not completed on or before June 12, 1980, but for which a Notice of Intention to Drill was on file with the Arizona Water Commission on or before June 12, 1980.
3. No registration fee is required for Exempt Wells. A \$10.00 registration fee must accompany registration forms for all Non-Exempt Wells.
4. An "Exempt Well" means a well having a pump with a maximum capacity of not more than 35 gallons per minute which is used to withdraw groundwater. An Exempt Well may include the non-commercial irrigation of not more than 1 acre of land.
5. A "Non-Exempt Well" means a well that is not an "Exempt Well".

INSTRUCTIONS FOR REGISTRATION QUESTIONS

1. The Registrant must be the owner of the well and may be an individual, public or private corporation, company, partnership, firm, association, society, estate, trust, any other private organization or enterprise, the United States, any state, territory or country or a governmental entity, political subdivision or municipal corporation organized under or subject to the constitution and laws of this State.
2. If you own an existing irrigation well drilled at any time, or any other type of well drilled on or after June 20, 1968, you should have an assigned control and/or file number. Write these numbers in item 2. If you do not know the number, please explain the reason on the form or on an attached sheet.
3.
 - a. Fill in the Section, Township and Range in all cases if it is available.
 - b. If the well is in a subdivision and you have this information, give the subdivision name, Lot Number, and Address.
4. Show all purposes for which the water is used.
5. If the well is used for irrigation, give the number of acres irrigated in 1980 from the well.
6. If the owner of the land is an individual, give the last name, first name, middle initial. If the owner of the land is a corporation, partnership, firm, etc., fill in the appropriate title.
7. Complete the section on Well Data with the most accurate information available to you. If the data is not available, write N/A in the blanks.
8. Give the legal description of the place of use of the water. If place of use is in a subdivision and legal description is not available, give the subdivision name, Lot Number and/or address on the blank line.
9. The person in whose name a well is registered shall notify the Department of any change in ownership and shall keep all information on the registration record current and accurate. A form entitled "Change of Well Information/Ownership" is available for this purpose. A blank form will be furnished with the returned duplicate copy of the registration form.

DEPARTMENT OF WATER RESOURCES

99 EAST VIRGINIA AVENUE
PHOENIX, ARIZONA 85004

REGISTRATION OF EXISTING WELLS

READ INSTRUCTIONS ON BACK OF THIS FORM BEFORE COMPLETING
PRINT OR TYPE — FILE IN DUPLICATE

REGISTRATION FEE (CHECK ONE)
EXEMPT WELL (NO CHARGE) ☒
NON-EXEMPT WELL — \$10.00 ☐

ARIZONA
DEPT. OF
MAY -5 1982
WATER
RESOURCES

48
FOR OFFICE USE ONLY
REGISTRATION NO. 55- 632801
FILE NO. D(3-14)1106
FILED MAY 05 1982 AT 3pm
(DATE) (TIME)
INA
AMA

- Name of Registrant:
HEBBARD & WEBB CO.
5001 East Washington St. Phoenix Arizona 85034
(Address) (City) (State) (Zip)
- File and/or Control Number under previous groundwater law:
N/A 35-
(File Number) (Control Number)
- a. The well is located within the --- $\frac{1}{4}$ NW $\frac{1}{4}$ NE $\frac{1}{4}$, Section 11,
of Township 3S N/S, Range 14E E/W, G & SRB & M, in the
County of Gila.
- b. If in a subdivision: Name of subdivision N/A
Lot No. Address
- The principal use(s) of water (Examples: irrigation - stockwater - domestic - municipal - industrial)
Stockwater
- If for irrigation use, number of acres irrigated from well
- Owner of land on which well is located. If same as Item 1, check this box ☒

(Address) (City) (State) (Zip)

- Well data (If data not available, write N/A) (SKUNK CAMP WELL #2)
 - Depth of Well 400 feet
 - Diameter of casing 6 inches
 - Depth of casing 75 feet
 - Type of casing Galv. Steel
 - Maximum pump capacity 35 gallons per minute.
 - Depth to water 175 feet below land surface.
 - Date well completed April 1 1951
(Month) (Day) (Year)
- The place(s) of use of water. If same as Item 3, check this box ☒.
 $\frac{1}{4}$ $\frac{1}{4}$ $\frac{1}{4}$, Section Township Range
 $\frac{1}{4}$ $\frac{1}{4}$ $\frac{1}{4}$, Section Township Range

Attach additional sheet if necessary.

- DATE 5-4-82 SIGNATURE OF REGISTRANT James D. Webb
HEBBARD & WEBB CO.

MICROFILMED

INSTRUCTIONS FOR COMPLETING REGISTRATION FORM

General Instructions

1. A person who owns an "Existing Well" shall register the well, pursuant to A.R.S. 45-593, by filing this form in duplicate with the Department of Water Resources not later than midnight June 14, 1982. The form must be completed and signed. Failure to do so will constitute a violation of A.R.S. 45-593, and may subject the well owner to injunction and/or civil penalties, pursuant to A.R.S. Title 45, Article 12.
2. An "Existing Well" means, (1) a well which was drilled on or before June 12, 1980 and which is not abandoned or sealed, or (2) a well which was not completed on or before June 12, 1980, but for which a Notice of Intention to Drill was on file with the Arizona Water Commission on or before June 12, 1980.
3. No registration fee is required for Exempt Wells. A \$10.00 registration fee must accompany registration forms for all Non-Exempt Wells.
4. An "Exempt Well" means a well having a pump with a maximum capacity of not more than 35 gallons per minute which is used to withdraw groundwater. An Exempt Well may include the non-commercial irrigation of not more than 1 acre of land.
5. A "Non-Exempt Well" means a well that is not an "Exempt Well".

INSTRUCTIONS FOR REGISTRATION QUESTIONS

1. The Registrant must be the owner of the well and may be an individual, public or private corporation, company, partnership, firm, association, society, estate, trust, any other private organization or enterprise, the United States, any state, territory or country or a governmental entity, political subdivision or municipal corporation organized under or subject to the constitution and laws of this State.
2. If you own an existing irrigation well drilled at any time, or any other type of well drilled on or after June 20, 1968, you should have an assigned control and/or file number. Write these numbers in item 2. If you do not know the number, please explain the reason on the form or on an attached sheet.
3.
 - a. Fill in the Section, Township and Range in all cases if it is available.
 - b. If the well is in a subdivision and you have this information, give the subdivision name, Lot Number, and Address.
4. Show all purposes for which the water is used.
5. If the well is used for irrigation, give the number of acres irrigated in 1980 from the well.
6. If the owner of the land is an individual, give the last name, first name, middle initial. If the owner of the land is a corporation, partnership, firm, etc., fill in the appropriate title.
7. Complete the section on Well Data with the most accurate information available to you. If the data is not available, write N/A in the blanks.
8. Give the legal description of the place of use of the water. If place of use is in a subdivision and legal description is not available, give the subdivision name, Lot Number and/or address on the blank line.
9. The person in whose name a well is registered shall notify the Department of any change in ownership and shall keep all information on the registration record current and accurate. A form entitled "Change of Well Information/Ownership" is available for this purpose. A blank form will be furnished with the returned duplicate copy of the registration form.



Arizona Department of Water Resources
Water Management Support Section
PO Box 458 • Phoenix, Arizona 85001-0458
(602) 771-8500 • (800) 352-8488
www.azwater.gov

REQUEST TO CHANGE WELL INFORMATION

D(3-14-14) B00

RECEIVED

FILE NUMBER

DEC 24 2007

WELL REGISTRATION NUMBER
55 - 622477

- Review instructions prior to completing form in black or blue ink.
- You must include with your Notice:
 - ▶ check or money order for any required fee(s)
- Authority for fee AAG. R12-15-151(B)(4)(a), ARS. §45-113(B)
- ** PLEASE PRINT CLEARLY **

SECTION 1. REGISTRY INFORMATION

Well Owner FULL NAME OF COMPANY, ORGANIZATION, OR INDIVIDUAL Susan Carol Bolich		Location of Well WELL LOCATION ADDRESS (IF ANY)					
MAILING ADDRESS 29315 North 144 th Street		TOWNSHIP (N/S)	RANGE (E/W)	SECTION	160 ACRE	40 ACRE	10 ACRE
CITY / STATE / ZIP CODE Scottsdale, AZ 85262		3 S	14 E	14	NW	SE	NW
CONTACT PERSON NAME AND TITLE Susan Carol Bolich		LATITUDE Degrees Minutes Seconds		LONGITUDE Degrees Minutes Seconds			
TELEPHONE NUMBER (602) 803-7899		FAX		METHOD OF LATITUDE/LONGITUDE (CHECK ONE) <input type="checkbox"/> GPS: Hand-Field <input type="checkbox"/> USGS Quad Map <input type="checkbox"/> Conventional Survey <input type="checkbox"/> GPS: Survey-Grade * IF GPS WAS USED, GEOGRAPHIC COORDINATE DATUM (CHECK ONE) <input type="checkbox"/> NAD 83 <input type="checkbox"/> Other (please specify):			
		COUNTY ASSESSOR'S PARCEL ID NUMBER BOOK MAP PARCEL			COUNTY WHERE WELL IS LOCATED Gila County		

Type of Request (CHECK ONE)

- ☐ Change of Well Drilling Contractor (Fill out Section 2) ☒ Change of Well Ownership (Fill out Section 3) ☐ Change of Well Information (location, use, etc.) (Fill out Section 4)

SECTION 2. REQUEST TO CHANGE WELL DRILLING CONTRACTOR (\$10 Fee Required)

\$10 FEE

- * If drilling or abandoning a well, the Department must receive this request and issue authorization to the new drilling firm prior to the commencement of well drilling or abandonment.

Current Well Drilling Contractor FULL NAME OF COMPANY, ORGANIZATION, OR INDIVIDUAL		New Well Drilling Contractor NAME OF COMPANY, ORGANIZATION, OR INDIVIDUAL	
DWR LICENSE NUMBER		DWR LICENSE NUMBER	ROC LICENSE CATEGORY
TELEPHONE NUMBER	FAX	TELEPHONE NUMBER	FAX

SECTION 3. STATEMENT OF CHANGE OF WELL OWNERSHIP (\$10 Fee Required)

\$10 FEE

- * If this change pertains to more than one well and the names are the same, only one \$10 fee is required.

Previous Well Owner FULL NAME OF COMPANY, ORGANIZATION, OR INDIVIDUAL Susan Carol Bolich		New Well Owner FULL NAME OF COMPANY, ORGANIZATION, OR INDIVIDUAL Rick Larry Jodsaas	
MAILING ADDRESS 29315 North 144 th Street		MAILING ADDRESS HC 2 Box 2360	
CITY / STATE / ZIP CODE Scottsdale, AZ 85262		CITY / STATE / ZIP CODE Winkelman, AZ 85292	
CONTACT PERSON NAME AND TITLE Susan Carol Bolich		CONTACT PERSON NAME AND TITLE Rick Larry Jodsaas	
TELEPHONE NUMBER (602) 803-7899	FAX	TELEPHONE NUMBER (602) 402-6382	FAX

SECTION 4. CHANGE OF WELL INFORMATION (No Fee Required)

NO FEE

NOTE: Applies only to wells that have already been drilled. For proposed wells, an amended Notice of Intent to Drill a Well must be filed.
EXPLAIN

I HEREBY CERTIFY that the above statements are true to the best of my knowledge and belief.

TYPE OR PRINT NAME AND TITLE Susan C Bolich	SIGNATURE OF WELL OWNER Susan C Bolich	DATE 11/27/07
--	---	------------------



Arizona Department of Water Resources
Water Management Support Section
PO Box 458 • Phoenix, Arizona 85001-0458
(602) 771-8500 • (800) 352-8488
www.azwater.gov

REQUEST TO CHANGE WELL INFORMATION

DEC 24 2007

FILE NUMBER

WELL REGISTRATION NUMBER

55 - 622478

- Review instructions prior to completing form in black or blue ink.
 - You must include with your Notice:
 - ▶ check or money order for any required fee(s)
 - Authority for fee AAG. R12-15-151(B)(4)(a), ARS. §45-113(B)
- ** PLEASE PRINT CLEARLY ****

SECTION 1. REGISTRY INFORMATION

Well Owner FULL NAME OF COMPANY, ORGANIZATION, OR INDIVIDUAL Susan Carol Bolich		Location of Well WELL LOCATION ADDRESS (IF ANY)					
MAILING ADDRESS 29315 North 144 th Street		TOWNSHIP (N/S) 3 S	RANGE (E/W) 15 E	SECTION 18	160 ACRE SE	40 ACRE NE	10 ACRE NE
CITY / STATE / ZIP CODE Scottsdale, AZ 85262		LATITUDE Degrees Minutes Seconds		LONGITUDE Degrees Minutes Seconds			
CONTACT PERSON NAME AND TITLE Susan Carol Bolich		METHOD OF LATITUDE/LONGITUDE (CHECK ONE) <input type="checkbox"/> *GPS: Hand-Field <input type="checkbox"/> USGS Quad Map <input type="checkbox"/> Conventional Survey <input type="checkbox"/> *GPS: Survey-Grade * IF GPS WAS USED, GEOGRAPHIC COORDINATE DATUM (CHECK ONE) <input type="checkbox"/> NAD 83 <input type="checkbox"/> Other (please specify):					
TELEPHONE NUMBER (602) 803-7899	FAX	COUNTY ASSESSOR'S PARCEL ID NUMBER BOOK MAP PARCEL				COUNTY WHERE WELL IS LOCATED Gila County	

Type of Request (CHECK ONE)

- ☐ Change of Well Drilling Contractor (Fill out Section 2) ☒ Change of Well Ownership (Fill out Section 3) ☐ Change of Well Information (location, use, etc.) (Fill out Section 4)

SECTION 2. REQUEST TO CHANGE WELL DRILLING CONTRACTOR (\$10 Fee Required)

\$10 FEE

- * If drilling or abandoning a well, the Department must receive this request and issue authorization to the new drilling firm prior to the commencement of well drilling or abandonment.

Current Well Drilling Contractor FULL NAME OF COMPANY, ORGANIZATION, OR INDIVIDUAL		New Well Drilling Contractor NAME OF COMPANY, ORGANIZATION, OR INDIVIDUAL	
DWR LICENSE NUMBER		DWR LICENSE NUMBER	ROC LICENSE CATEGORY
TELEPHONE NUMBER	FAX	TELEPHONE NUMBER	FAX

SECTION 3. STATEMENT OF CHANGE OF WELL OWNERSHIP (\$10 Fee Required)

\$10 FEE

- * If this change pertains to more than one well and the names are the same, only one \$10 fee is required.

Previous Well Owner FULL NAME OF COMPANY, ORGANIZATION, OR INDIVIDUAL Susan Carol Bolich		New Well Owner FULL NAME OF COMPANY, ORGANIZATION, OR INDIVIDUAL Rick Larry Jodsaas	
MAILING ADDRESS 29315 North 144 th Street		MAILING ADDRESS HC 2 Box 2360	
CITY / STATE / ZIP CODE Scottsdale, AZ 85262		CITY / STATE / ZIP CODE Winkelman, AZ 85292	
CONTACT PERSON NAME AND TITLE Susan Carol Bolich		CONTACT PERSON NAME AND TITLE Rick Larry Jodsaas	
TELEPHONE NUMBER (602) 803-7899	FAX	TELEPHONE NUMBER (602) 402-6382	FAX

SECTION 4. CHANGE OF WELL INFORMATION (No Fee Required)

NO FEE

NOTE: Applies only to wells that have already been drilled. For proposed wells, an amended Notice of Intent to Drill a Well must be filed.
EXPLAIN

I HEREBY CERTIFY that the above statements are true to the best of my knowledge and belief.

TYPE OR PRINT NAME AND TITLE Susan C. Bolich	SIGNATURE OF WELL OWNER Susan C. Bolich	DATE 11/27/07
--	---	-------------------------



Arizona Department of Water Resources
Water Management Support Section
PO Box 458 • Phoenix, Arizona 85001-0458
(602) 771-8500 • (800) 352-8488
www.azwater.gov

REQUEST TO CHANGE WELL INFORMATION

RECEIVED

DEC 24 2007

FILE NUMBER

WELL REGISTRATION NUMBER

55 - 622479

- Review instructions prior to completing form in black or blue ink.
 - You must include with your Notice:
 - ▶ check or money order for any required fee(s)
 - Authority for fee AAG. R12-15-151(B)(4)(a), ARS. §45-113(B)
- ** PLEASE PRINT CLEARLY ****

SECTION 1. REGISTRY INFORMATION

Well Owner FULL NAME OF COMPANY, ORGANIZATION, OR INDIVIDUAL Susan Carol Bolich		Location of Well WELL LOCATION ADDRESS (IF ANY)					
MAILING ADDRESS 29315 North 144 th Street		TOWNSHIP (N/S) 3 S	RANGE (E/W) 15 E	SECTION 8	160 ACRE NE	40 ACRE SE	10 ACRE SE
CITY / STATE / ZIP CODE Scottsdale, AZ 85262		LATITUDE Degrees Minutes Seconds		LONGITUDE Degrees Minutes Seconds			
CONTACT PERSON NAME AND TITLE Susan Carol Bolich		METHOD OF LATITUDE/LONGITUDE (CHECK ONE) <input type="checkbox"/> USGS Quad Map <input type="checkbox"/> Conventional Survey <input type="checkbox"/> GPS: Hand-Held <input type="checkbox"/> GPS: Survey-Grade					
TELEPHONE NUMBER (602) 803-7899		FAX		* IF GPS WAS USED, GEOGRAPHIC COORDINATE DATUM (CHECK ONE) <input type="checkbox"/> NAD 83 <input type="checkbox"/> Other (please specify):			
		COUNTY ASSESSOR'S PARCEL ID NUMBER BOOK MAP PARCEL				COUNTY WHERE WELL IS LOCATED Gila County	

Type of Request (CHECK ONE)

- ☐ Change of Well Drilling Contractor (Fill out Section 2) ☒ Change of Well Ownership (Fill out Section 3) ☐ Change of Well Information (location, use, etc.) (Fill out Section 4)

SECTION 2. REQUEST TO CHANGE WELL DRILLING CONTRACTOR (\$10 Fee Required)

\$10 FEE

- * If drilling or abandoning a well, the Department must receive this request and issue authorization to the new drilling firm prior to the commencement of well drilling or abandonment.

Current Well Drilling Contractor FULL NAME OF COMPANY, ORGANIZATION, OR INDIVIDUAL		New Well Drilling Contractor NAME OF COMPANY, ORGANIZATION, OR INDIVIDUAL	
DWR LICENSE NUMBER		DWR LICENSE NUMBER	ROC LICENSE CATEGORY
TELEPHONE NUMBER	FAX	TELEPHONE NUMBER	FAX

SECTION 3. STATEMENT OF CHANGE OF WELL OWNERSHIP (\$10 Fee Required)

\$10 FEE

- * If this change pertains to more than one well and the names are the same, only one \$10 fee is required.

Previous Well Owner FULL NAME OF COMPANY, ORGANIZATION, OR INDIVIDUAL Susan Carol Bolich		New Well Owner FULL NAME OF COMPANY, ORGANIZATION, OR INDIVIDUAL Rick Larry Jodsaas	
MAILING ADDRESS 29315 North 144 th Street		MAILING ADDRESS HC 2 Box 2360	
CITY / STATE / ZIP CODE Scottsdale, AZ 85262		CITY / STATE / ZIP CODE Winkelman, AZ 85284	
CONTACT PERSON NAME AND TITLE Susan Carol Bolich		CONTACT PERSON NAME AND TITLE Rick Larry Jodsaas	
TELEPHONE NUMBER (602) 803-7899	FAX	TELEPHONE NUMBER (602) 402-6382	FAX

SECTION 4. CHANGE OF WELL INFORMATION (No Fee Required)

NO FEE

NOTE: Applies only to wells that have already been drilled. For proposed wells, an amended Notice of Intent to Drill a Well must be filed.

EXPLAIN

I HEREBY CERTIFY that the above statements are true to the best of my knowledge and belief.

TYPE OR PRINT NAME AND TITLE Susan C Bolich	SIGNATURE OF WELL OWNER Susan C Bolich	DATE 11/27/07
---	--	-------------------------



Arizona Department of Water Resources
Water Management Support Section
PO Box 458 • Phoenix, Arizona 85001-0458
(602) 771-8500 • (800) 352-8488
www.azwater.gov

REQUEST TO CHANGE WELL INFORMATION

DEC 24 2007

FILE NUMBER

WELL REGISTRATION NUMBER
55 - 622471

- Review instructions prior to completing form in black or blue ink.
 - You must include with your Notice:
 - ▶ check or money order for any required fee(s)
 - Authority for fee AAG. R12-15-151(B)(4)(a), ARS. §45-113(B)
- ** PLEASE PRINT CLEARLY ****

SECTION 1. REGISTRY INFORMATION

Well Owner FULL NAME OF COMPANY, ORGANIZATION, OR INDIVIDUAL Susan Carol Bolich		Location of Well WELL LOCATION ADDRESS (IF ANY)					
MAILING ADDRESS 29315 North 144 th Street		TOWNSHIP (N/S)	RANGE (E/W)	SECTION	60 ACRE	40 ACRE	20 ACRE
CITY / STATE / ZIP CODE Scottsdale, AZ 85262		35	14 E	24	NW	NW	NW
CONTACT PERSON NAME AND TITLE Susan Carol Bolich		LATITUDE Degrees Minutes Seconds		LONGITUDE Degrees Minutes Seconds			
TELEPHONE NUMBER (602) 803-7899		FAX		METHOD OF LATITUDE/LONGITUDE (CHECK ONE) <input type="checkbox"/> USGS Quad Map <input type="checkbox"/> Conventional Survey <input type="checkbox"/> *GPS Hand-Held <input type="checkbox"/> *GPS Survey-Grade			
		* IF GPS WAS USED, GEOGRAPHIC COORDINATE DATUM (CHECK ONE) <input type="checkbox"/> NAD 83 <input type="checkbox"/> Other (please specify):					
		COUNTY ASSESSOR'S PARCEL ID NUMBER BOOK MAP PARCEL				COUNTY WHERE WELL IS LOCATED Gila County	

Type of Request (CHECK ONE)

- ☐ Change of Well Drilling Contractor (Fill out Section 2) ☒ Change of Well Ownership (Fill out Section 3) ☐ Change of Well Information (location, use, etc.) (Fill out Section 4)

SECTION 2. REQUEST TO CHANGE WELL DRILLING CONTRACTOR (\$10 Fee Required)

\$10 FEE

- If drilling or abandoning a well, the Department must receive this request and issue authorization to the new drilling firm prior to the commencement of well drilling or abandonment.

Current Well Drilling Contractor FULL NAME OF COMPANY, ORGANIZATION, OR INDIVIDUAL		New Well Drilling Contractor NAME OF COMPANY, ORGANIZATION, OR INDIVIDUAL	
DWR LICENSE NUMBER		DWR LICENSE NUMBER	ROC LICENSE CATEGORY
TELEPHONE NUMBER	FAX	TELEPHONE NUMBER	FAX

SECTION 3. STATEMENT OF CHANGE OF WELL OWNERSHIP (\$10 Fee Required)

\$10 FEE

- If this change pertains to more than one well and the names are the same, only one \$10 fee is required.

Previous Well Owner FULL NAME OF COMPANY, ORGANIZATION, OR INDIVIDUAL Susan Carol Bolich		New Well Owner FULL NAME OF COMPANY, ORGANIZATION, OR INDIVIDUAL Rick Larry Jodsaas	
MAILING ADDRESS 29315 North 144 th Street		MAILING ADDRESS HC 2 Box 2360	
CITY / STATE / ZIP CODE Scottsdale, AZ 85262		CITY / STATE / ZIP CODE Winkelman, AZ 85292	
CONTACT PERSON NAME AND TITLE Susan Carol Bolich		CONTACT PERSON NAME AND TITLE Rick Larry Jodsaas	
TELEPHONE NUMBER (602) 803-7899	FAX	TELEPHONE NUMBER (602) 402-6382	FAX

SECTION 4. CHANGE OF WELL INFORMATION (No Fee Required)

NO FEE

NOTE: Applies only to wells that have already been drilled. For proposed wells, an amended Notice of Intent to Drill a Well must be filed.
EXPLAIN

I HEREBY CERTIFY that the above statements are true to the best of my knowledge and belief.

TYPE OR PRINT NAME AND TITLE Susan C Bolich	SIGNATURE OF WELL OWNER Susan C Bolich	DATE 11/27/07
--	---	------------------



Gila County, AZ
Linda Haught Ortega, Recorder
12/05/2007
04:19PM
Doc Code: WD

Doc Id: 2007-019848
Receipt #: 61158
Rec Fee: 15.00

PIONEER TITLE AGENCY RECORDING

Recorded at the request of,
and when recorded return to:
William J. Simon
Tiffany & Bosco, P.A.
2525 E. Camelback Road, Third Floor
Phoenix, AZ 85016-9240



2007-019848
Page: 1 of 6
12/06/2007 04:19P
15.00

Gila County, AZ

WD

SPECIAL WARRANTY DEED

For good and valuable consideration, the receipt of which is hereby acknowledged, **SUSAN CAROL BOLICH**, an unmarried woman ("Grantor"), does hereby transfer, assign and convey to **RICK L. JODSAAS**, an unmarried man ("Grantee"), and his successors and assigns forever, all of Grantor's right, title and interest in and to that certain real property located in Gila and Pinal Counties, State of Arizona, which is legally described in Exhibit A attached hereto and made a part hereof, including any rights to minerals, surface water and wells, subject to: taxes, assessments, reservations in patents, easements, right of way, encumbrances, liens, covenants, conditions and restrictions as may appear of record; any and all conditions, easements, encroachments, rights of way or restrictions which a physical inspection, or accurate ALTA survey of the property would reveal; and any applicable zoning and use laws and regulations of any municipality, county, state or federal government or agency effecting the property.

Grantor hereby warrants the title to the property against all acts of Grantor and no others, subject to the matters set forth above.

DATED Nov. 2, 2007.

DEC 24 2007

GRANTOR:

Susan C. Bolich
Susan Carol Bolich

STATE OF ARIZONA)
County of Maricopa) ss.

The foregoing Special Warranty Deed was acknowledged before me this 2nd day of November, 2007, by Susan Carol Bolich.

Jessica A. Lopez
Notary Public

My commission expires:

9/5/2011
Exhibit A is attached.





2007-019848

Page: 2 of 5

12/05/2007 04:19P

15.00

Gila County, AZ

WD

EXHIBIT A TO SPECIAL WARRANTY DEED

(Legal Description of Real Property)

UNOFFICIAL
COPY

DEC 24 2007



Gila County, AZ

WD

2007-019848

Page: 3 of 5

12/05/2007 04:19P
15.00

Exhibit A

PARCEL NO. 1

The Southeast quarter of the Southeast quarter of Section 11, Township 3 South, Range 14 East of the Gila and Salt River Base and Meridian, Gila County, Arizona;

EXCEPTING therefrom all coal, oil, gas and other mineral deposits, as reserved in instrument recorded as Docket 365, Page 822.

PARCEL NO. 2

The South half of the Southwest quarter of Section 11, Township 3 South, Range 14 East of the Gila and Salt River Base and Meridian, Gila County, Arizona;

EXCEPTING therefrom 1/16th interest in all coal, oil, gas and other mineral deposits, as reserved in instrument recorded as Docket 314, Page 211.

PARCEL NO. 3

The Northwest quarter of the Southeast quarter of Section 12, Township 3 South, Range 14 East of the Gila and Salt River Base and Meridian, Gila County, Arizona ;

EXCEPTING therefrom all coal, oil, gas and other mineral deposits as reserved in instrument recorded as Docket 365, Page 822.

PARCEL NO. 4

The West half of the Southwest quarter of Section 13, Township 3 South, Range 14 East of the Gila and Salt River Base and Meridian, Gila County, Arizona;

EXCEPTING therefrom all coal, oil, gas and other mineral deposits, as reserved in instrument recorded as Docket 365, Page 822.

PARCEL NO. 5

The Southwest quarter of the Southeast quarter; the Northwest quarter of the Southeast quarter; the East half of the Southeast quarter; the Southeast quarter of the Northwest quarter; the Southwest quarter of the Northwest quarter and the Northeast quarter of the Southwest quarter of Section 14, Township 3 South, Range 14 East of the Gila and Salt River Base and Meridian, Gila County, Arizona.

EXCEPTING therefrom all coal, oil, gas and other mineral deposits, as reserved in instrument recorded as Docket 365, Page 822.

PARCEL NO. 6

The North half of the Northwest quarter of Section 14, Township 3 South, Range 14 East of the Gila and Salt River Base and Meridian, Gila County, Arizona;

EXCEPTING therefrom 1/16th interest in all coal, oil, gas and other mineral deposits, as reserved in instrument recorded as Docket 367, Page 108;



2007-019848

Page: 4 of 5

12/05/2007 04:10P

15.00

Gila County, AZ

MD

EXCEPTING therefrom 15/16 interest in all coal, oil, gas and other mineral deposits, as reserved in instrument recorded as Docket 365, Page 822.

PARCEL NO. 7

The Northeast quarter of the Northeast quarter of Section 15, Township 3 South, Range 14 East of the Gila and Salt River Base and Meridian, Gila County, Arizona.

EXCEPTING therefrom all coal, oil, gas and other mineral deposits, as reserved in instrument recorded as Docket 251, Page 60.

PARCEL NO. 8

The Southeast quarter of the Northeast quarter of Section 23, Township 3 South, Range 14 East of the Gila and Salt River Base and Meridian, Gila County, Arizona.

EXCEPTING therefrom 1/16th interest in all coal, oil, gas and other mineral deposits as reserved in instrument recorded as Docket 344, Page 966.

EXCEPTING therefrom 15/16 interest in all coal, oil, gas and other mineral deposits, as reserved in instrument recorded as Docket 365, Page 822.

PARCEL NO. 9

The North half of the Northeast quarter of Section 23, Township 3 South, Range 14 East of the Gila and Salt River Base and Meridian, Gila County, Arizona.

EXCEPTING therefrom all coal, oil, gas and other mineral deposits, as reserved in instrument recorded as Docket 365, Page 822.

PARCEL NO. 10

The East half of the Northwest quarter and the Southwest quarter of the Northwest quarter of Section 24, Township 3 South, Range 14 East of the Gila and Salt River Base and Meridian, Gila County, Arizona;

EXCEPTING therefrom all coal, oil, gas and other mineral deposits, as reserved in instrument recorded as Docket 137, Page 63.

PARCEL NO. 11

The Northwest quarter of the Northwest quarter of Section 24, Township 3 South, Range 14 East of the Gila and Salt River Base and Meridian, Gila County, Arizona.

PARCEL NO. 12

The Southwest quarter of the Southeast quarter of Section 29, Township 2 South, Range 15 East of the Gila and Salt River Base and Meridian, Gila County, Arizona.

EXCEPTING therefrom all coal, oil, gas and other mineral deposits, as reserved in instrument recorded as Docket 365, Page 822.

PARCEL NO. 13



2007-019848

Page: 6 of 5

12/05/2007 04:19P

15.00

The South half of the Southeast quarter of the Northwest quarter and the North half of the Northeast quarter of the Southwest quarter of Section 30, Township 2 South, Range 15 East of the Gila and Salt River Base and Meridian, Gila County, Arizona;

EXCEPTING therefrom all coal, oil, gas and other mineral deposits, as reserved in instrument recorded as Docket 137, Page 65.

PARCEL NO. 14

The Southeast quarter of the Southwest quarter and the South half of the Southeast quarter of Section 31, Township 2 South, Range 15 East of the Gila and Salt River Base and Meridian, Gila County, Arizona;

EXCEPTING therefrom all coal, oil, gas and other mineral deposits, as reserved in instrument recorded as Docket 365, Page 822.

PARCEL NO. 15

The Northeast quarter of the Northwest quarter; the Northwest quarter of the Northeast quarter; and the Southeast quarter of the Northeast quarter of Section 8, Township 3 South, Range 15 East of the Gila and Salt River Base and Meridian, Gila County, Arizona.

EXCEPTING therefrom all coal, oil, gas and other mineral deposits, as reserved in instrument recorded as Docket 365, Page 822.

PARCEL NO. 16

All that portion of Lots 1, 2 and 5 of Section 23, Township 3 South, Range 14 East of the Gila and Salt River Base and Meridian, Pinal County, Arizona, lying Westerly of the Easterly boundary line of Pinal County;

EXCEPT any portion lying within Iron King, Hoosier Bay, Copper King, Copper Depot and Copper Depot 2 Lode Mining Claims as shown on Mineral Survey No. 2447 in Riverside Mining District;

EXCEPT 1/16th of all gas, oil, metals and mineral rights as set forth in ARS 37-231, Subsection C, as reserved in the Patent from the State of Arizona recorded January 09, 1969 as Docket 557, Page 306;

EXCEPTING therefrom all coal, oil, gas and other mineral deposits together with reasonable access for the purpose of exploring for or developing same, as reserved in deed recorded as Docket 759, Page 209.

TIFFANY & BOSCO
P.A.

THIRD FLOOR CAMELBACK ESPLANADE II
2525 EAST CAMELBACK ROAD
PHOENIX, ARIZONA 85016-9240
TELEPHONE: (602) 255-6000
FACSIMILE: (602) 255-0103
general@tblaw.com
www.tblaw.com

WILLIAM J. SIMON
ATTORNEY AT LAW
DIRECT LINE: (602) 255-6004
wjs@tblaw.com

December 21, 2007

Arizona Department of Water Resources
Attention: Water Management Support Section
P.O. Box 33589
Phoenix, AZ 85067

**Re: Previous Well Owner: Susan Carol Bolich
New Well Owner: Rick Larry Jodsaas**

Dear Sir or Madam:

Enclosed are the following documents:

1. 4 signed original Requests to Change Well Information;
2. Check in the amount of \$10.00 as fee.

Please process this Request and have a copy of the conformed documents mailed to me at the above address when complete.

Very truly yours,

TIFFANY & BOSCO, P.A.



William J. Simon

WJS/jal

Enclosures

cc: Rick L. Jodsaas w/o enclosures
13489-001/357489

Printed: 12/24/2007 11:25:30 AM

Store 0010
Sale Receipt #
12/24/2007
Page 1

Arizona Department of Water Resources

3550 N Central Ave
Phoenix AZ 85012

TIFFANY & BOSCO

2525 EAST CAMELBACK ROAD

PHOENIX, AZ 85016

602-255-6000

Date: 12/24/2007

Cashier: WRLXS

Type: Mail

DCS/INV#	DESCRIPTION	ATTR	SIZE	QTY	PRICE	EXT PRICE
F 78	4439-12 CHANGE OF WELL OWNERSHIP	15238		1	10.00	10.00
			1 Unit(s)		Subtotal:	10.00
					RECEIPT TOTAL:	10.00
					Tendered:	10.00

Check #: 10.00 # 28654

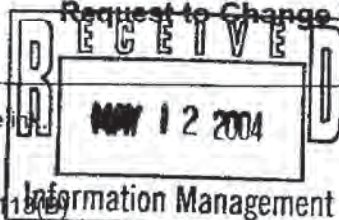
various

We Appreciate Your Business!



Arizona Department of Water Resources
Groundwater Management Support Section
P.O. Box 458 • Phoenix, Arizona 85001-0458
(602) 417-2470 • (800) 352-8488
www.water.az.gov

Request to Change Well Information



FILE NUMBER

WELL REGISTRATION NUMBER

55 - 622477

- ❖ Review instructions prior to completing form in black or blue ink.
- ❖ You must include with your Notice:
 - check or money order for any required fee(s)
- ❖ Authority for fee: A.A.C. R12-15-151(B)(4)(a), A.R.S. § 45-118(B)

** PLEASE PRINT CLEARLY **

SECTION 1. REGISTRY INFORMATION

Well Owner		Location of Well					
FULL NAME OF COMPANY, ORGANIZATION, OR INDIVIDUAL		WELL LOCATION ADDRESS (IF ANY)					
Richard Seger							
MAILING ADDRESS		TOWNSHIP (N/S)	RANGE (E/W)	SECTION	160 ACRE	40 ACRE	10 ACRE
HCR Box 2360 Dripping Springs Rd.		35	14E	14	NW ¼	SE ¼	NW ¼
CITY / STATE / ZIP CODE		LATITUDE			LONGITUDE		
Winkelman, AZ 85242		Degrees Minutes Seconds ° ' " N			Degrees Minutes Seconds ° ' " W		
CONTACT PERSON NAME AND TITLE		COUNTY ASSESSOR'S PARCEL ID NUMBER					
Richard Seger, Owner		BOOK MAP PARCEL					
TELEPHONE NUMBER		COUNTY WHERE WELL IS LOCATED					
928-719-1374		Gila County					

Type of Request (CHECK ONE)

- ☐ Change of Well Drilling Contractor (Fill out Section 2) ☒ Change of Well Ownership (Fill out Section 3) ☐ Change of Well Information (location, use, etc.) (Fill out Section 4)

SECTION 2. REQUEST TO CHANGE WELL DRILLING CONTRACTOR (\$10 Fee Required)

- ❖ If drilling or abandoning a well, the Department must receive this request and issue authorization to the new drilling firm prior to the commencement of well drilling or abandonment.

\$10 FEE

Current Well Drilling Contractor		New Well Drilling Contractor	
FULL NAME OF COMPANY, ORGANIZATION, OR INDIVIDUAL		FULL NAME OF COMPANY, ORGANIZATION, OR INDIVIDUAL	
DWR LICENSE NUMBER		DWR LICENSE NUMBER	ROC LICENSE CATEGORY
TELEPHONE NUMBER		TELEPHONE NUMBER	FAX

SECTION 3. STATEMENT OF CHANGE OF WELL OWNERSHIP (\$10 Fee Required)

- ❖ If this change pertains to more than one well and the names are the same, only one \$10 fee is required.

\$10 FEE

Previous Well Owner		New Well Owner	
FULL NAME OF COMPANY, ORGANIZATION, OR INDIVIDUAL		FULL NAME OF COMPANY, ORGANIZATION, OR INDIVIDUAL	
Richard Seger		Susan Carol Bolich	
MAILING ADDRESS		MAILING ADDRESS	
HCE Box 2360 Dripping Springs Rd.		HCR Box 2360 Dripping Springs Rd.	
CITY / STATE / ZIP CODE		CITY / STATE / ZIP CODE	
Winkelman, AZ 85242		Winkelman, AZ 85242	
CONTACT PERSON NAME AND TITLE		CONTACT PERSON NAME AND TITLE	
Richard Seger, Owner		Susan Bolich, Owner	
TELEPHONE NUMBER		TELEPHONE NUMBER	FAX
928-719-1374		928-719-1374	

SECTION 4. CHANGE OF WELL INFORMATION (No Fee Required)

NO FEE

NOTE: Applies only to wells that have already been drilled. For proposed wells, an amended Notice of Intent to Drill a Well must be filed.

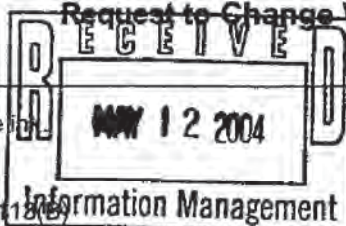
EXPLAIN	
I HEREBY CERTIFY that the above statements are true to the best of my knowledge and belief.	
TYPE OR PRINT NAME AND TITLE	SIGNATURE OF WELL OWNER
	Richard J. Seger
	DATE



Arizona Department of Water Resources
Groundwater Management Support Section
P.O. Box 458 • Phoenix, Arizona 85001-0458
(602) 417-2470 • (800) 352-8488
www.water.az.gov

013-14)14 B PD

Request to Change Well Information



FILE NUMBER

WELL REGISTRATION NUMBER

55 - 622477

- ❖ Review instructions prior to completing form in black or blue ink.
 - ❖ You must include with your Notice:
 - check or money order for any required fee(s)
 - ❖ Authority for fee: A.A.C. R12-15-151(B)(4)(a), A.R.S. § 45-118(B)
- ** PLEASE PRINT CLEARLY ****

SECTION 1. REGISTRY INFORMATION

Well Owner		Location of Well					
FULL NAME OF COMPANY, ORGANIZATION, OR INDIVIDUAL		WELL LOCATION ADDRESS (IF ANY)					
Richard Seger							
MAILING ADDRESS		TOWNSHIP (N/S)	RANGE (E/W)	SECTION	160 ACRE	40 ACRE	10 ACRE
HCR Box 2360 Dripping Springs Rd.		35	14E	14	NW ¼	SE ¼	NW ¼
CITY / STATE / ZIP CODE		LATITUDE			LONGITUDE		
Winkelman, AZ 85242		Degrees	Minutes	Seconds	Degrees	Minutes	Seconds
CONTACT PERSON NAME AND TITLE		COUNTY ASSESSOR'S PARCEL ID NUMBER					
Richard Seger, Owner		BOOK		MAP		PARCEL	
TELEPHONE NUMBER		COUNTY WHERE WELL IS LOCATED					
928-719-1374		Gila County					
FAX							

Type of Request (CHECK ONE)

- ☐ Change of Well Drilling Contractor (Fill out Section 2) ☒ Change of Well Ownership (Fill out Section 3) ☐ Change of Well Information (location, use, etc.) (Fill out Section 4)

SECTION 2. REQUEST TO CHANGE WELL DRILLING CONTRACTOR (\$10 Fee Required)

- ♦ If drilling or abandoning a well, the Department must receive this request and issue authorization to the new drilling firm prior to the commencement of well drilling or abandonment.

\$10 FEE

Current Well Drilling Contractor		New Well Drilling Contractor	
FULL NAME OF COMPANY, ORGANIZATION, OR INDIVIDUAL		FULL NAME OF COMPANY, ORGANIZATION, OR INDIVIDUAL	
DWR LICENSE NUMBER		DWR LICENSE NUMBER	ROC LICENSE CATEGORY
TELEPHONE NUMBER		TELEPHONE NUMBER	FAX
FAX			

SECTION 3. STATEMENT OF CHANGE OF WELL OWNERSHIP (\$10 Fee Required)

- ♦ If this change pertains to more than one well and the names are the same, only one \$10 fee is required.

\$10 FEE

Previous Well Owner		New Well Owner	
FULL NAME OF COMPANY, ORGANIZATION, OR INDIVIDUAL		FULL NAME OF COMPANY, ORGANIZATION, OR INDIVIDUAL	
Richard Seger		Susan Carol Bolich	
MAILING ADDRESS		MAILING ADDRESS	
HCE Box 2360 Dripping Springs Rd.		HCR Box 2360 Dripping Springs Rd.	
CITY / STATE / ZIP CODE		CITY / STATE / ZIP CODE	
Winkelman, AZ 85242		Winkelman, AZ 85242	
CONTACT PERSON NAME AND TITLE			

ORIGINAL DOCUMENT IS PRINTED ON CHEMICAL REACTIVE PAPER & HAS A MICROPRINTED BORDER

FIRST AMERICAN
P.O. Box 843
Tucson, AZ 85702
(520) 425-4481

PR. 4000
Ofc. 4235

Bank of America -
Global Client Svcs 333 S. Beaudry
Avenue
Los Angeles CA 90017-1466

1233

Date 04/30/2004

FILE NO. 235-4116667

235303043

*****\$40.00*****

DOLLARS

\$*****40.00

Escrow Trust Account
VOID AFTER 12/31/2004

PAY

Re:

TO THE
ORDER
OF

Arizona Department of Water Resources Groundwater Management Support
P O Box 458
Phoenix, AZ 85001-0458

Brown

DEPARTMENT OF WATER RESOURCES
99 EAST VIRGINIA AVENUE
PHOENIX, ARIZONA 85004



REGISTRATION OF EXISTING WELLS

READ INSTRUCTIONS ON BACK OF THIS FORM BEFORE COMPLETING
PRINT OR TYPE - FILE IN DUPLICATE

REGISTRATION FEE (CHECK ONE)

EXEMPT WELL (NO CHARGE) ☒

NON-EXEMPT WELL - \$10.00 ☐

FOR OFFICE USE ONLY

REGISTRATION NO. 55- 622477

FILE NO. D(3-14)146db

FILED JUN 12 1982 AT 9 am
(DATE) (TIME)

INA

AMA

1. Name of Registrant:

Brown Land and Cattle Co.

Box 2784

Globe, AZ

85501

(Address)

(City)

(State)

(Zip)

2. File and/or Control Number under previous groundwater law:

(File Number)

35-
(Control Number)

3. a. The well is located within the NW $\frac{1}{4}$ SE $\frac{1}{4}$ NW $\frac{1}{4}$, Section 14,
of Township 3 ~~N~~ Range 14 ~~E~~ G & SRB & M, in the
County of Gila

b. If in a subdivision: Name of subdivision _____
Lot No. _____, Address _____

4. The principal use(s) of water (Examples: irrigation stockwater - domestic - municipal - industrial)

5. If for irrigation use, number of acres irrigated from well 1

6. Owner of land on which well is located. If same as Item 1, check this box ☒

(Address)

(City)

(State)

(Zip)

7. Well data (If data not available, write N/A)

a. Depth of Well 900 feet

b. Diameter of casing 10 inches

c. Depth of casing 900 feet

d. Type of casing steel

e. Maximum pump capacity 6 gallons per minute.

f. Depth to water 90 feet below land surface.

g. Date well completed _____
(Month) (Day) (Year)

8. The place(s) of use of water. If same as Item 3, check this box ☒

1/4 1/4 1/4, Section _____ Township _____ Range _____

1/4 1/4 1/4, Section _____ Township _____ Range _____

Attach additional sheet if necessary.

9. DATE 6-14-82 SIGNATURE OF REGISTRANT

Paul Brown

MICROFILMED

INSTRUCTIONS FOR COMPLETING REGISTRATION FORM

General Instructions

1. A person who owns an "Existing Well" shall register the well, pursuant to A.R.S. 45-593, by filing this form **in duplicate** with the Department of Water Resources not later than midnight June 14, 1982. The form must be completed and signed. Failure to do so will constitute a violation of A.R.S. 45-593, and may subject the well owner to injunction and/or civil penalties, pursuant to A.R.S. Title 45, Article 12.
2. An "Existing Well" means, (1) a well which was drilled on or before June 12, 1980 and which is not abandoned or sealed, or (2) a well which was not completed on or before June 12, 1980, but for which a Notice of Intention to Drill was on file with the Arizona Water Commission on or before June 12, 1980.
3. No registration fee is required for Exempt Wells. A \$10.00 registration fee must accompany registration forms for all Non-Exempt Wells.
4. An "Exempt Well" means a well having a pump with a maximum capacity of not more than 35 gallons per minute which is used to withdraw groundwater. An Exempt Well may include the non-commercial irrigation of not more than 1 acre of land.
5. A "Non-Exempt Well" means a well that is not an "Exempt Well".

INSTRUCTIONS FOR REGISTRATION QUESTIONS

1. The Registrant must be the owner of the well and may be an individual, public or private corporation, company, partnership, firm, association, society, estate, trust, any other private organization or enterprise, the United States, any state, territory or country or a governmental entity, political subdivision or municipal corporation organized under or subject to the constitution and laws of this State.
2. If you own an existing irrigation well drilled at any time, or any other type of well drilled on or after June 20, 1968, you should have an assigned control and/or file number. Write these numbers in item 2. If you do not know the number, please explain the reason on the form or on an attached sheet.
3.
 - a. Fill in the Section, Township and Range in all cases if it is available.
 - b. If the well is in a subdivision and you have this information, give the subdivision name, Lot Number, and Address.
4. Show all purposes for which the water is used.
5. If the well is used for irrigation, give the number of acres irrigated in 1980 from the well.
6. If the owner of the land is an individual, give the last name, first name, middle initial. If the owner of the land is a corporation, partnership, firm, etc., fill in the appropriate title.
7. Complete the section on Well Data with the most accurate information available to you. If the data is not available, write N/A in the blanks.
8. Give the legal description of the place of use of the water. If place of use is in a subdivision and legal description is not available, give the subdivision name, Lot Number and/or address on the blank line.
9. The person in whose name a well is registered shall notify the Department of any change in ownership and shall keep all information on the registration record current and accurate. A form entitled "Change of Well Information/Ownership" is available for this purpose. A blank form will be furnished with the returned duplicate copy of the registration form.



DEPARTMENT OF WATER RESOURCES
99 East Virginia Avenue
Suite 100
Phoenix, Arizona 85004

CHANGE OF WELL INFORMATION

Registration No. 622477

I request the following information be changed in Well File Number D(3-14)14 bdb

Date _____, 19____ Signature of Well Owner _____

STATEMENT OF CHANGE OF WELL OWNERSHIP

I, Neil Brown, state that I am (no longer) the
(new) owner of the well described below:

Township 3S Range 14E Section 14, SE 1/4 NW 1/4

Registration #55-_____ File No. _____

<u>Neil Brown</u> Previous Owner	<u>Lorena Brown</u> New Owner
<u>Rt. 1 Box 409</u> Address	<u>HCA Box 2360</u> Address
<u>Shuman, Arizona</u> City State Zip	<u>W. Kelman AZ 85292</u> City State Zip

NOTE: ARS §45-593 requires that the Department be notified of change of well ownership and that the well owner is required to keep the Department's Well Registration records current and accurate. Well data and ownership changes must be submitted within 30 days after changes take place.

NOTE: SAVE THIS FORM TO REPORT FUTURE
CHANGES IN OWNERSHIP OR WELL
DATA SUCH AS PUMP CAPACITY, ETC.

ENTERED JUL 11 1988

DEPARTMENT OF WATER RESOURCES

99 EAST VIRGINIA AVENUE
PHOENIX, ARIZONA 85004

REGISTRATION OF EXISTING WELLS

READ INSTRUCTIONS ON BACK OF THIS FORM BEFORE COMPLETING
PRINT OR TYPE - FILE IN DUPLICATE

REGISTRATION FEE (CHECK ONE)	
EXEMPT WELL (NO CHARGE)	<input checked="" type="checkbox"/>
NON-EXEMPT WELL - \$10.00	<input type="checkbox"/>

ARIZONA
DEPT. OF

MAY -5 1982 13:00

WATER
RESOURCES

FOR OFFICE USE ONLY	
REGISTRATION NO. 55-	632799
FILE NO.	D(3-14)16cd
FILED	MAY 05 1982
(DATE)	AT 3pm (TIME)
INA	
AMA	

1. Name of Registrant:

HEBBARD & WEBB CO.

5001 East Washington St. Phoenix Arizona 85034
(Address) (City) (State) (Zip)

2. File and/or Control Number under previous groundwater law:

N/A 35-
(File Number) (Control Number)

3. a. The well is located within the --- 1/4 SE 1/4 SW 1/4, Section 16
of Township 3S N/S, Range 14E E/W, G & SRB & M, in the
County of Pinal.

b. If in a subdivision: Name of subdivision N/A
Lot No. , Address .

4. The principal use(s) of water (Examples: irrigation - stockwater - domestic - municipal - industrial)
Stockwater

5. If for irrigation use, number of acres irrigated from well .

6. Owner of land on which well is located. If same as Item 1, check this box ☒

(Address) (City) (State) (Zip)

7. Well data (If data not available, write N/A) (OLD PASTURE WELL)

a. Depth of Well 51 feet
b. Diameter of casing N/A inches
c. Depth of casing N/A feet
d. Type of casing N/A .
e. Maximum pump capacity 35 gallons per minute.
f. Depth to water 2 feet below land surface.
g. Date well completed January 1 1951
(Month) (Day) (Year)

8. The place(s) of use of water. If same as Item 3, check this box ☒.

1/4 1/4 1/4, Section Township Range
1/4 1/4 1/4, Section Township Range

Attach additional sheet if necessary.

9. DATE 5-4-82 SIGNATURE OF REGISTRANT James M Webb

HEBBARD & WEBB CO

MICROFILMED

INSTRUCTIONS FOR COMPLETING REGISTRATION FORM

General Instructions

1. A person who owns an "Existing Well" shall register the well, pursuant to A.R.S. 45-593, by filing this form in duplicate with the Department of Water Resources not later than midnight June 14, 1982. The form must be completed and signed. Failure to do so will constitute a violation of A.R.S. 45-593, and may subject the well owner to injunction and/or civil penalties, pursuant to A.R.S. Title 45, Article 12.
2. An "Existing Well" means, (1) a well which was drilled on or before June 12, 1980 and which is not abandoned or sealed, or (2) a well which was not completed on or before June 12, 1980, but for which a Notice of Intention to Drill was on file with the Arizona Water Commission on or before June 12, 1980.
3. No registration fee is required for Exempt Wells. A \$10.00 registration fee must accompany registration forms for all Non-Exempt Wells.
4. An "Exempt Well" means a well having a pump with a maximum capacity of not more than 35 gallons per minute which is used to withdraw groundwater. An Exempt Well may include the non-commercial irrigation of not more than 1 acre of land.
5. A "Non-Exempt Well" means a well that is not an "Exempt Well".

INSTRUCTIONS FOR REGISTRATION QUESTIONS

1. The Registrant must be the owner of the well and may be an individual, public or private corporation, company, partnership, firm, association, society, estate, trust, any other private organization or enterprise, the United States, any state, territory or country or a governmental entity, political subdivision or municipal corporation organized under or subject to the constitution and laws of this State.
2. If you own an existing irrigation well drilled at any time, or any other type of well drilled on or after June 20, 1968, you should have an assigned control and/or file number. Write these numbers in item 2. If you do not know the number, please explain the reason on the form or on an attached sheet.
3.
 - a. Fill in the Section, Township and Range in all cases if it is available.
 - b. If the well is in a subdivision and you have this information, give the subdivision name, Lot Number, and Address.
4. Show all purposes for which the water is used.
5. If the well is used for irrigation, give the number of acres irrigated in 1980 from the well.
6. If the owner of the land is an individual, give the last name, first name, middle initial. If the owner of the land is a corporation, partnership, firm, etc., fill in the appropriate title.
7. Complete the section on Well Data with the most accurate information available to you. If the data is not available, write N/A in the blanks.
8. Give the legal description of the place of use of the water. If place of use is in a subdivision and legal description is not available, give the subdivision name, Lot Number and/or address on the blank line.
9. The person in whose name a well is registered shall notify the Department of any change in ownership and shall keep all information on the registration record current and accurate. A form entitled "Change of Well Information/Ownership" is available for this purpose. A blank form will be furnished with the returned duplicate copy of the registration form.

DEPARTMENT OF WATER RESOURCES
99 EAST VIRGINIA AVENUE
PHOENIX, ARIZONA 85004

REGISTRATION OF EXISTING WELLS

READ INSTRUCTIONS ON BACK OF THIS FORM BEFORE COMPLETING
PRINT OR TYPE - FILE IN DUPLICATE

REGISTRATION FEE (CHECK ONE)	
EXEMPT WELL (NO CHARGE)	<input type="checkbox"/>
NON-EXEMPT WELL - \$10.00	<input checked="" type="checkbox"/>

U8

FOR OFFICE USE ONLY	
REGISTRATION NO. 55-	615943
FILE NO.	0(3-11)22 CAC
FILED	6-14-82 AT 4:35 P
(DATE)	(TIME)
INA	

1. Name of Registrant:
THE STATE OF ARIZONA - STATE LAND DEPARTMENT
1624 W. ADAMS PHOENIX ARIZONA 85007
(Address) (City) (State) (Zip)
2. File and/or Control Number under previous groundwater law:
(File Number) _____ (Control Number) 35-
3. a. The well is located within the SW NE SE SW SE 22
of Township 3 NS 14 SE SS G & SRB & M, in the
County of Pima.
- b. If in a subdivision: Name of subdivision _____
Lot No. _____, Address _____
4. The principal use(s) of water (Examples: irrigation - stockwater - domestic - municipal - industrial)
Industrial
5. If for irrigation use, number of acres irrigated from well _____
6. Owner of land on which well is located. If same as Item 1, check this box ☒

NOT APPLICABLE

(Address) (City) (State) (Zip)

7. Well data (If data not available, write N/A)
- a. Depth of Well 501 feet
- b. Diameter of casing 10 inches
- c. Depth of casing 501 feet
- d. Type of casing Steel
- e. Maximum pump capacity N/A gallons per minute.
- f. Depth to water 240 feet below land surface.
- g. Date well completed N/A
(Month) (Day) (Year)
8. The place(s) of use of water. If same as Item 3, check this box ☒.
- 1/4 1/4 1/4, Section _____ Township _____ Range _____
1/4 1/4 1/4, Section _____ Township _____ Range _____

Attach additional sheet if necessary.

9. DATE June 14, 1982 SIGNATURE OF REGISTRANT

for Gerald L. Smith
STATE LAND COMMISSIONER
MICROFILMED

INSTRUCTIONS FOR COMPLETING REGISTRATION FORM

General Instructions

1. A person who owns an "Existing Well" shall register the well, pursuant to A.R.S. 45-593, by filing this form in duplicate with the Department of Water Resources not later than midnight June 14, 1982. The form must be completed and signed. Failure to do so will constitute a violation of A.R.S. 45-593, and may subject the well owner to injunction and/or civil penalties, pursuant to A.R.S. Title 45, Article 12.
2. An "Existing Well" means, (1) a well which was drilled on or before June 12, 1980 and which is not abandoned or sealed, or (2) a well which was not completed on or before June 12, 1980, but for which a Notice of Intention to Drill was on file with the Arizona Water Commission on or before June 12, 1980.
3. No registration fee is required for Exempt Wells. A \$10.00 registration fee must accompany registration forms for all Non-Exempt Wells.
4. An "Exempt Well" means a well having a pump with a maximum capacity of not more than 35 gallons per minute which is used to withdraw groundwater. An Exempt Well may include the non-commercial irrigation of not more than 1 acre of land.
5. A "Non-Exempt Well" means a well that is not an "Exempt Well".

INSTRUCTIONS FOR REGISTRATION QUESTIONS

1. The Registrant must be the owner of the well and may be an individual, public or private corporation, company, partnership, firm, association, society, estate, trust, any other private organization or enterprise, the United States, any state, territory or country or a governmental entity, political subdivision or municipal corporation organized under or subject to the constitution and laws of this State.
2. If you own an existing irrigation well drilled at any time, or any other type of well drilled on or after June 20, 1968, you should have an assigned control and/or file number. Write these numbers in item 2. If you do not know the number, please explain the reason on the form or on an attached sheet.
3.
 - a. Fill in the Section, Township and Range in all cases if it is available.
 - b. If the well is in a subdivision and you have this information, give the subdivision name, Lot Number, and Address.
4. Show all purposes for which the water is used.
5. If the well is used for irrigation, give the number of acres irrigated in 1980 from the well.
6. If the owner of the land is an individual, give the last name, first name, middle initial. If the owner of the land is a corporation, partnership, firm, etc., fill in the appropriate title.
7. Complete the section on Well Data with the most accurate information available to you. If the data is not available, write N/A in the blanks.
8. Give the legal description of the place of use of the water. If place of use is in a subdivision and legal description is not available, give the subdivision name, Lot Number and/or address on the blank line.
9. The person in whose name a well is registered shall notify the Department of any change in ownership and shall keep all information on the registration record current and accurate. A form entitled "Change of Well Information/Ownership" is available for this purpose. A blank form will be furnished with the returned duplicate copy of the registration form.

CHANGE OF WELL INFORMATION

Registration No. 55- 615 943

I request the following information be changed in Well File Number D(14-15)35 CBD

Location from D(14-15)35 CBD
To D(3-14)22 CAC

Date 6/19, 1983 Shirley A. Adams
 Signature of Well Owner

STATEMENT OF CHANGE OF WELL OWNERSHIP

I, _____, state that I am (no longer) the
 (new) owner of the well described below:

Township _____ Range _____ Section _____, _____ $\frac{1}{4}$ _____ $\frac{1}{4}$ _____ $\frac{1}{4}$

Registration #55- _____ File No. _____

Previous Owner _____ New Owner _____

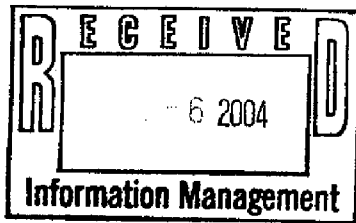
Address _____ Address _____

City _____ State _____ Zip _____ City _____ State _____ Zip _____

NOTE: ARS 45-593 requires that the Department be notified of change of well ownership and that the well owner is required to keep the Department's Well Registration records current and accurate. Well data and ownership changes must be submitted within 30 days after changes take place.

NOTE: SAVE THIS FORM TO REPORT FUTURE
 CHANGES IN OWNERSHIP OR WELL
 DATA SUCH AS PUMP CAPACITY, ETC.

MICROFILMED



Susan Carol Bolich
Victory Cross Ranch
HC 2 Box 2360
Winkelman, AZ 85292

8-2-04

AZ Dept of Water Resources
Information Management
PO Box 458
Phoenix, AZ 85001

To whom it may concern,

As of May 1, 2004, I am the new owner of Victory Cross Ranch (HC 2 Box 2360 Dripping Springs Rd, Winkelman, AZ 85292). The paperwork for registering the water rights has been processed and apparently is in my name. I am requesting a copy of this current registration with my name on the paperwork as the current owner, so that I may have the proper ownership on file.

Also please note that the wrong zip code was typed in (by the title company or whomever filled the application out) on the 'Request to Change Well Information' Form for the following registration numbers:

55-622471 (I've included a copy of this one with the wrong info highlighted for your review)

55-622477

55-622478

55-622479

Do we also have numbers ending in 72, 73, 74, 75, 76? Could it still be in Seger's name? Please let me know.

Please check that the correct zip code is reflected on all paperwork, and if it is not correct on the ownership that you are sending me, please update it before sending it so that I have the correct information on my paperwork.

If you have any questions you may contact me at 928-719-1374.

Thank you,

A handwritten signature in cursive script, appearing to read "Susan Bolich".

Susan Carol Bolich

ENTERED AUG 13 2004



Arizona Department of Water Resources
Groundwater Management Support Section
P.O. Box 458 • Phoenix, Arizona 85001-0458
(602) 417-2470 • (800) 352-8488
www.water.az.gov

Request to Change Well Information

- ❖ Review instructions prior to completing form in black or blue ink.
- ❖ You must include with your Notice:
 - check or money order for any required fee(s)
- ❖ Authority for fee: A.A.C. R12-15-151(B)(4)(a), A.R.S. § 45-113(B)

** PLEASE PRINT CLEARLY **

FILE NUMBER

WELL REGISTRATION NUMBER

55 - 622471

SECTION 1. REGISTRY INFORMATION

Well Owner FULL NAME OF COMPANY, ORGANIZATION, OR INDIVIDUAL Richard Seger		Location of Well WELL LOCATION ADDRESS (IF ANY)					
MAILING ADDRESS HCR Box 2360 Dripping Springs Rd.		TOWNSHIP (N/S) 3S	RANGE (E/W) 14E	SECTION 24	160 ACRE NW ¼	40 ACRE NW ¼	10 ACRE NW ¼
CITY / STATE / ZIP CODE Winkelman, AZ 85242		LATITUDE Degrees Minutes Seconds			LONGITUDE Degrees Minutes Seconds		
CONTACT PERSON NAME AND TITLE Richard Seger, Owner		COUNTY ASSESSOR'S PARCEL ID NUMBER BOOK MAP PARCEL					
TELEPHONE NUMBER 928-719-1374	FAX	COUNTY WHERE WELL IS LOCATED Gila County					

Type of Request (CHECK ONE)

- ☐ Change of Well Drilling Contractor (Fill out Section 2) ☒ Change of Well Ownership (Fill out Section 3) ☐ Change of Well Information (location, use, etc.) (Fill out Section 4)

SECTION 2. REQUEST TO CHANGE WELL DRILLING CONTRACTOR (\$10 Fee Required)

- ♦ If drilling or abandoning a well, the Department must receive this request and issue authorization to the new drilling firm prior to the commencement of well drilling or abandonment.

\$10 FEE

Current Well Drilling Contractor FULL NAME OF COMPANY, ORGANIZATION, OR INDIVIDUAL		New Well Drilling Contractor FULL NAME OF COMPANY, ORGANIZATION, OR INDIVIDUAL	
DWR LICENSE NUMBER		DWR LICENSE NUMBER	ROC LICENSE CATEGORY
TELEPHONE NUMBER	FAX	TELEPHONE NUMBER	FAX

SECTION 3. STATEMENT OF CHANGE OF WELL OWNERSHIP (\$10 Fee Required)

- ♦ If this change pertains to more than one well and the names are the same, only one \$10 fee is required.

\$10 FEE

Previous Well Owner FULL NAME OF COMPANY, ORGANIZATION, OR INDIVIDUAL Richard Seger		New Well Owner FULL NAME OF COMPANY, ORGANIZATION, OR INDIVIDUAL Susan Carol Bolich	
MAILING ADDRESS HCR Box 2360 Dripping Springs Rd.		MAILING ADDRESS HCR Box 2360 Dripping Springs Rd.	
CITY / STATE / ZIP CODE Winkelman, AZ 85242		CITY / STATE / ZIP CODE Winkelman, AZ 85242	
CONTACT PERSON NAME AND TITLE Richard Seger, Owner		CONTACT PERSON NAME AND TITLE Susan Bolich, Owner	
TELEPHONE NUMBER 928-719-1374	FAX	TELEPHONE NUMBER 928-719-1374	FAX

SECTION 4. CHANGE OF WELL INFORMATION (No Fee Required)

NO FEE

NOTE: Applies only to wells that have already been drilled. For proposed wells, an amended Notice of Intent to Drill a Well must be filed.

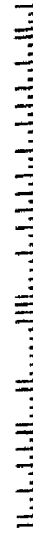
EXPLAIN ENTERED AUG 13 2004	
I HEREBY CERTIFY that the above statements are true to the best of my knowledge and belief.	
TYPE OR PRINT NAME AND TITLE Richard Seger	SIGNATURE OF WELL OWNER Richard Seger
DATE	

Victory Cross Ranch
HC 2 Box 2360
Winkelman, AZ 85292



AZ Dept of Water Resources
Information Management
PO Box 458
Phoenix, AZ 85001

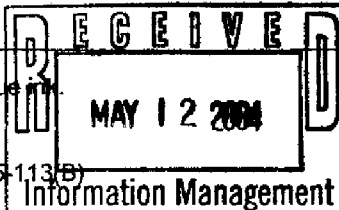
09 199 00 00 1 00 00 00 00 00





Arizona Department of Water Resources
Groundwater Management Support Section
P.O. Box 458 • Phoenix, Arizona 85001-0458
(602) 417-2470 • (800) 352-8488
www.water.az.gov

D13-14) 24 B3B
Request to Change Well Information



FILE NUMBER
WELL REGISTRATION NUMBER
55 - 622471

- ❖ Review instructions prior to completing form in black or blue ink.
- ❖ You must include with your Notice:
 - check or money order for any required fee(s)
- ❖ Authority for fee: A.A.C. R12-15-151(B)(4)(a), A.R.S. § 45-113(B)

** PLEASE PRINT CLEARLY **

SECTION 1. REGISTRY INFORMATION	
Well Owner FULL NAME OF COMPANY, ORGANIZATION, OR INDIVIDUAL Richard Seger	Location of Well WELL LOCATION ADDRESS (IF ANY)
MAILING ADDRESS HCR Box 2360 Dripping Springs Rd.	TOWNSHIP (N/S) RANGE (E/W) SECTION 3S 14E 24
CITY / STATE / ZIP CODE Winkelman, AZ 85242	160 ACRE 40 ACRE 10 ACRE NW 1/4 NW 1/4 NW 1/4
CONTACT PERSON NAME AND TITLE Richard Seger, Owner	LATITUDE Degrees Minutes Seconds ° ' " N
TELEPHONE NUMBER 928-719-1374	LONGITUDE Degrees Minutes Seconds ° ' " W
FAX	COUNTY ASSESSOR'S PARCEL ID NUMBER BOOK MAP PARCEL
	COUNTY WHERE WELL IS LOCATED Gila County

Type of Request (CHECK ONE)		
<input type="checkbox"/> Change of Well Drilling Contractor (Fill out Section 2)	<input checked="" type="checkbox"/> Change of Well Ownership (Fill out Section 3)	<input type="checkbox"/> Change of Well Information (location, use, etc.) (Fill out Section 4)

SECTION 2. REQUEST TO CHANGE WELL DRILLING CONTRACTOR (\$10 Fee Required)	
♦ If drilling or abandoning a well, the Department must receive this request and issue authorization to the new drilling firm <u>prior to</u> the commencement of well drilling or abandonment.	
\$10 FEE	
Current Well Drilling Contractor FULL NAME OF COMPANY, ORGANIZATION, OR INDIVIDUAL DWR LICENSE NUMBER TELEPHONE NUMBER FAX	New Well Drilling Contractor FULL NAME OF COMPANY, ORGANIZATION, OR INDIVIDUAL DWR LICENSE NUMBER ROC LICENSE CATEGORY TELEPHONE NUMBER FAX

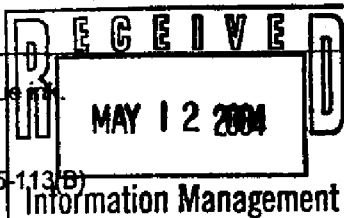
SECTION 3. STATEMENT OF CHANGE OF WELL OWNERSHIP (\$10 Fee Required)	
♦ If this change pertains to more than one well and the names are the same, only one \$10 fee is required.	
\$10 FEE	
Previous Well Owner FULL NAME OF COMPANY, ORGANIZATION, OR INDIVIDUAL MAILING ADDRESS CITY / STATE / ZIP CODE CONTACT PERSON NAME AND TITLE TELEPHONE NUMBER FAX	New Well Owner FULL NAME OF COMPANY, ORGANIZATION, OR INDIVIDUAL MAILING ADDRESS CITY / STATE / ZIP CODE CONTACT PERSON NAME AND TITLE TELEPHONE NUMBER FAX

SECTION 4. CHANGE OF WELL INFORMATION (No Fee Required)	
NOTE: Applies only to wells that have already been drilled. For proposed wells, an amended Notice of Intent to Drill a Well must be filed.	
EXPLAIN	
I HEREBY CERTIFY that the above statements are true to the best of my knowledge and belief.	
TYPE OR PRINT NAME AND TITLE	SIGNATURE OF WELL OWNER DATE



Arizona Department of Water Resources
Groundwater Management Support Section
P.O. Box 458 • Phoenix, Arizona 85001-0458
(602) 417-2470 • (800) 352-8488
www.water.az.gov

Request to Change Well Information



FEE NUMBER
WELL REGISTRATION NUMBER
55 - 622471

- ❖ Review instructions prior to completing form in black or blue ink.
- ❖ You must include with your Notice:
 - check or money order for any required fee(s)
- ❖ Authority for fee: A.A.C. R12-15-151(B)(4)(a), A.R.S. § 45-113(B)
- ** PLEASE PRINT CLEARLY **

SECTION 1. REGISTRY INFORMATION						
Well Owner				Location of Well		
FULL NAME OF COMPANY, ORGANIZATION, OR INDIVIDUAL				WELL LOCATION ADDRESS (IF ANY)		
Richard Seger						
MAILING ADDRESS				TOWNSHIP (NS)	RANGE (EW)	SECTION
HCR Box 2360 Dripping Springs Rd.				3S	14E	24
CITY / STATE / ZIP CODE				LATITUDE	LONGITUDE	
Winkelman, AZ 85242						



First American Title Insurance Agency, Inc.

P.O. Box 843
Tolpe, AZ 85502
(928) 425-4481

PR 4000
Ofc. 4235

Bank of America -
Global Client Svcs 333 S. Beaudry
Avenue
Los Angeles CA 90017-1466

1233

Date 04/30/2004

FILE NO. 235-4116667

PAY

*****\$40.00*****

DOLLARS

\$*****40.00

Re:

TO THE
ORDER
OF

Arizona Department of Water Resources Groundwater Management Support
P O Box 458
Phoenix, AZ 85001-0458

SECTION 3. STATEMENT OF CHANGE OF WELL OWNERSHIP (\$10 Fee Required)				\$10 FEE
♦ If this change pertains to more than one well and the names are the same, only one \$10 fee is required.				
Previous Well Owner		New Well Owner		
FULL NAME OF COMPANY, ORGANIZATION, OR INDIVIDUAL		FULL NAME OF COMPANY, ORGANIZATION, OR INDIVIDUAL		
Richard Seger		Susan Carol Bolich		
MAILING ADDRESS		MAILING ADDRESS		
HCE Box 2360 Dripping Springs Rd.		HCR Box 2360 Dripping Springs Rd.		
CITY / STATE / ZIP CODE		CITY / STATE / ZIP CODE		
Winkelman, AZ 85242		Winkelman, AZ 85242		
CONTACT PERSON NAME AND TITLE		CONTACT PERSON NAME AND TITLE		
Richard Seger, Owner		Susan Bolich, Owner		
TELEPHONE NUMBER	FAX	TELEPHONE NUMBER	FAX	
928-719-1374		928-719-1374		

SECTION 4. CHANGE OF WELL INFORMATION (No Fee Required)		NO FEE
NOTE: Applies only to wells that have already been drilled. For proposed wells, an amended Notice of Intent to Drill a Well must be filed.		
EXPLAIN		
I HEREBY CERTIFY that the above statements are true to the best of my knowledge and belief.		
TYPE OR PRINT NAME AND TITLE	SIGNATURE OF WELL OWNER	DATE
	Richard P. Seger	

DEPARTMENT OF WATER RESOURCES

99 EAST VIRGINIA AVENUE
PHOENIX, ARIZONA 85004

REGISTRATION OF EXISTING WELLS

READ INSTRUCTIONS ON BACK OF THIS FORM BEFORE COMPLETING
PRINT OR TYPE - FILE IN DUPLICATE

REGISTRATION FEE (CHECK ONE)

EXEMPT WELL (NO CHARGE) ☐NON-EXEMPT WELL - \$10.00 ☒

FOR OFFICE USE ONLY

REGISTRATION NO. 55- 622471FILE NO. D(3-14)24 BBBFILED JUN 12 1982 AT 9am
(DATE) (TIME)

INA

AMA

1. Name of Registrant:

BROWN LAND AND CATTLEBox 2784
(Address)GLOBE
(City)ARIZ.
(State)85501
(Zip)2. File and/or Control Number under previous groundwater law: NA - THIS LAND PURCHASED FROM THELMA HAGEN IN SEPTEMBER 1974

(File Number)

35-

(Control Number)

3. a. The well is located within the NW 1/4 NW 1/4 NW 1/4, Section 24, of Township 3 S. N3 Range 14 E. EW, G & SRB & M, in the County of GILA.

b. If in a subdivision: Name of subdivision _____, Lot No. _____, Address _____.

4. The principal use(s) of water (Examples: irrigation - stockwater - domestic - municipal - industrial)

IRRIGATION - DOMESTIC5. If for irrigation use, number of acres irrigated from well 70.6. Owner of land on which well is located. If same as Item 1, check this box ☒

(Address)

(City)

(State)

(Zip)

7. Well data (If data not available, write N/A)

a. Depth of Well 1400 feetb. Diameter of casing 20 inchesc. Depth of casing 1400 feetd. Type of casing STOVE PIPEe. Maximum pump capacity 1200 gallons per minute.f. Depth to water 150 feet below land surface.g. Date well completed NA
(Month) (Day) (Year)8. The place(s) of use of water. If same as Item 3, check this box ☐1/4 SE 1/4 SE 1/4, Section 14 Township 35 Range 14 E1/4 NE 1/4 NE 1/4, Section 23 Township 3 S. Range 14 ENW 1/4 NW 1/4 SECTION 24 T. 36 R. 14 E

Attach additional sheet if necessary.

9. DATE 6-12-82 SIGNATURE OF REGISTRANTCarl Brown

MICROFILMED

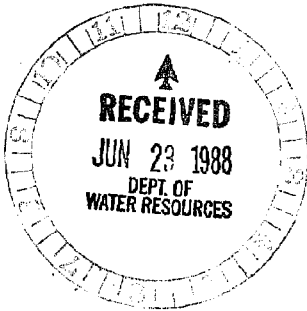
INSTRUCTIONS FOR COMPLETING REGISTRATION FORM

General Instructions

1. A person who owns an "Existing Well" shall register the well, pursuant to A.R.S. 45-593, by filing this form in duplicate with the Department of Water Resources not later than midnight June 14, 1982. The form must be completed and signed. Failure to do so will constitute a violation of A.R.S. 45-593, and may subject the well owner to injunction and/or civil penalties, pursuant to A.R.S. Title 45, Article 12.
2. An "Existing Well" means, (1) a well which was drilled on or before June 12, 1980 and which is not abandoned or sealed, or (2) a well which was not completed on or before June 12, 1980, but for which a Notice of Intention to Drill was on file with the Arizona Water Commission on or before June 12, 1980.
3. No registration fee is required for Exempt Wells. A \$10.00 registration fee must accompany registration forms for all Non-Exempt Wells.
4. An "Exempt Well" means a well having a pump with a maximum capacity of not more than 35 gallons per minute which is used to withdraw groundwater. An Exempt Well may include the non-commercial irrigation of not more than 1 acre of land.
5. A "Non-Exempt Well" means a well that is not an "Exempt Well".

INSTRUCTIONS FOR REGISTRATION QUESTIONS

1. The Registrant must be the owner of the well and may be an individual, public or private corporation, company, partnership, firm, association, society, estate, trust, any other private organization or enterprise, the United States, any state, territory or country or a governmental entity, political subdivision or municipal corporation organized under or subject to the constitution and laws of this State.
2. If you own an existing irrigation well drilled at any time, or any other type of well drilled on or after June 20, 1968, you should have an assigned control and/or file number. Write these numbers in item 2. If you do not know the number, please explain the reason on the form or on an attached sheet.
3.
 - a. Fill in the Section, Township and Range in all cases if it is available.
 - b. If the well is in a subdivision and you have this information, give the subdivision name, Lot Number, and Address.
4. Show all purposes for which the water is used.
5. If the well is used for irrigation, give the number of acres irrigated in 1980 from the well.
6. If the owner of the land is an individual, give the last name, first name, middle initial. If the owner of the land is a corporation, partnership, firm, etc., fill in the appropriate title.
7. Complete the section on Well Data with the most accurate information available to you. If the data is not available, write N/A in the blanks.
8. Give the legal description of the place of use of the water. If place of use is in a subdivision and legal description is not available, give the subdivision name, Lot Number and/or address on the blank line.
9. The person in whose name a well is registered shall notify the Department of any change in ownership and shall keep all information on the registration record current and accurate. A form entitled "Change of Well Information/Ownership" is available for this purpose. A blank form will be furnished with the returned duplicate copy of the registration form.



DEPARTMENT OF WATER RESOURCES
99 East Virginia Avenue
Suite 100
Phoenix, Arizona 85004
CHANGE OF WELL INFORMATION

Registration No. 622471
I request the following information be changed in Well File Number D(3-14)24666

Date _____, 19____ Signature of Well Owner _____

STATEMENT OF CHANGE OF WELL OWNERSHIP

I, Paul Brown, state that I am (no longer) the
(~~new~~) owner of the well described below:

Township 3S Range WE Section 24, NW $\frac{1}{4}$ NW $\frac{1}{4}$

Registration #55-_____ File No. _____

Paul Brown - Larana Brown
Previous Owner

Richard J or Nancy Segre
New Owner

P.O. Box 409
Address

HCA Box 2360
Address

Mesa, Arizona 85534
City State Zip

Winkelman AZ 85292
City State Zip

NOTE: ARS §45-593 requires that the Department be notified of change of well ownership and that the well owner is required to keep the Department's Well Registration records current and accurate. Well data and ownership changes must be submitted within 30 days after changes take place.

NOTE: SAVE THIS FORM TO REPORT FUTURE
CHANGES IN OWNERSHIP OR WELL
DATA SUCH AS PUMP CAPACITY, ETC.

ENTERED JUL 11 1988

BROWN LAND & CATTLE CO.
BOX 2784
GLOBE AZ 85501

STATE OF ARIZONA
DEPARTMENT OF WATER RESOURCES
WATER RIGHTS ADMINISTRATION
99 EAST VIRGINIA
PHOENIX, ARIZONA 85004

MICROFILMED

RECEIPT

KIND ENTRY	FILE REFERENCE NO.
55	622471
55	THRU

ACCOUNT NO.				INT. ACCT.	ITEM DESCRIPTION	RATE	\$ AMOUNT
FUND SOURCE	AGENCY	CHAPTER	DIV.				
					Filing Fee for Registration of	10.00	10.00
					Existing Wells	WAITER	PAYMENT
						GUESTS	1
						CHK NO	1495
					File No. D(3-14)24 bbb	55-1	10.00
						TAX	0.00
						TOTL	10.00
						GEN.CHEK	10.00
						# 2924 A	15:33

9/30/82 jc

Check # 1495

TOTAL

\$

10.00

REPORT OF WELL DRILLER

This report should be prepared by the driller in all detail and filed with the State Land Commissioner following completion of the well.

1. OWNER Thelma W. Hagan
Name
Box 150 Globe, Ariz
Address
2. Lessee or Operator
Name
Address
3. DRILLER Weber Well Drilling Co.
Name
P. O. Box 5354, Phoenix 10, Arizona
Address
4. Location of well: Twp. 35 Rge. 14E Section 24 NW $\frac{1}{4}$ NW $\frac{1}{4}$ NW $\frac{1}{4}$
10-acre subdivision
5. Intention to Drill File No. D(3-14) 24666 Permit No.

DESCRIPTION OF WELL

6. Total depth of hole 1475 ft.
7. Type of casing O.D.
8. Diameter and length of casing 16 in. from 0 to 615, in. from to in. from to
9. Method of sealing at reduction points
10. Perforated from 260 to 600, from to from to from to
11. Size of cuts 1/4 x 4 Number of cuts per foot 6
12. If screen was installed: Length ft. Diam. in. Type
13. Method of construction drilled
drilled, dug, driven, bored, jetted, etc.
14. Date started 10/11/61
Month Day Year
15. Date completed 3/14/62
Month Day Year
16. Depth of water 160 ft.
If flowing well, so state.
17. Describe point from which depth measurements were made, and give sea-level elevation if available
surface
18. If flowing well, state method of flow regulation

19. REMARKS:

622471

DO NOT WRITE IN THIS SPACE	
OFFICE RECORD	
Received <u>5-3-63</u>	by <u>D</u>
Filed <u>5-3-63</u>	by <u>D</u>
File No. <u>D(3-14) 24666</u>	

LOG OF WELL

Indicate depth at which water was first encountered, and the depth and thickness of water bearing beds. If water is artesian, indicate depth at which encountered, and depth to which it rose in well.

[illegible]

I hereby certify that this well was drilled by me (or under my supervision), and that each and all of the statements herein contained ~~are~~ are true to the best of my knowledge and belief.



Driller Walter W. Drilling Co.
Name

P.O. Box 5354 Phx
Address

Date 4-30-63

Appendix B

Photographs of Field-verified Wells at the Skunk Camp Site



PHOTO 1a. Haley Spring, May 2018.



PHOTO 1b. Concrete trough below Haley Spring, May 2018.



PHOTO 2a. Looney Spring, May 2018.



PHOTO 2b. Looney Spring discharge pipe, June 2018.



PHOTO 3a. Skunk Spring, view of contact between diabase and quartzite bedrock; dry in June 2018.



PHOTO 3b. Skunk Spring close up; dry in June 2018.



PHOTO 4a. Chimney Spring, June 2018.



PHOTO 4b. Chimney Spring; concrete headwall in quartzite; June 2018.



PHOTO 5a. Indian Spring; view of concrete headwall, June 2018.



PHOTO 5b. Indian Spring discharge pipe in headwall, June 2018.



PHOTO 6a. Stone Cabin Spring, June 2018.



PHOTO 6b. Close up of Stone Cabin Spring, June 2018.



PHOTO 7a. Stone Cabin Box Spring, June 2018.



PHOTO 7b. Close up Stone Cabin Box Spring, June 2018.