

**Resolution Copper Project and Land Exchange
Environmental Impact Statement**

USDA Forest Service
Tonto National Forest
Arizona

January 16, 2025

Process Memorandum to File

Republished Final Environmental Impact Statement Acreage Consistency Approach

This document is deliberative and is prepared by the third-party contractor in compliance with the National Environmental Policy Act and other laws, regulations, and policies to document ongoing process and analysis steps. This document does not take the place of any Line Officer's decision space related to this project.

**Prepared by:
Chris Garrett
SWCA Environmental Consultants**

Revision History

Date	Personnel	Revisions Made
1/16/2025	C. Garrett	Process memorandum created.

Purpose of Process Memorandum

A review of the version of the final environmental impact statement (FEIS) published in January 2021 (later rescinded in March 2021) and the Resolution Copper Project geographic information system (GIS) files maintained by SWCA Environmental Consultants (SWCA) identified potential discrepancies in the presentation of acreage throughout the document. These are not necessarily errors, but rather differences in acreage due to different methods of dealing with overlap of facilities, or acreages that had not been consistently updated to reflect project changes.

The purpose of this process memorandum is to provide a consistent acreage, broken down by

- project component or facility,
- alternative, and
- ownership (private, state, federal).

In addition, where slight discrepancies are identified with the GIS coverage, a rationale is provided for the acreage to be used consistently in the FEIS.

Regardless of these minor changes to GIS for private, State, or Federal land jurisdiction of the project footprint, the design features and mitigations described within each alternative of the EIS will be conducted on all lands; therefore, the effects analysis by resource remains correct.

Data Sources

The source for the acreages described are GIS files developed by SWCA to support the National Environmental Policy Act (NEPA) analysis. The specific file relied upon was obtained from M. Standart, GIS specialist, on December 5, 2024, and was titled: "Alternative_Ownership_Calcs_12052024.xlsx". This file consists of a table of acreages broken out by component, alternative, and ownership.

A hard copy of the data in this file is included as attachment 1.

Consistent Acreage for Alternatives

The consistent acreages for each alternative to use in the FEIS to represent the footprint of physical disturbance are given below in tables 1 through 4. Yellow highlighted cells indicate discrepancies with the GIS data. If needed, footnotes provide the rationale for the number presented in the table. Note that all components are mutually exclusive with no overlap, and acres were rounded to the nearest acre.

Table 1. Consistent FEIS acreages for Alternatives 2 and 3

Component	Forest Service Ownership (acres)	Private Ownership (acres)	State Ownership (acres)	Other Ownership (acres)	Total Federal Ownership (acres)	Total Area (acres)
<i>Common components</i>						
West Plant Site	0	940	0	0	0	940
East Plant Site	85	104	0	0	85	189
MARRCO	235	285	165	0	235	685
Filter plant and loadout facility	0	553	0	0	0	553
Borrow areas	90	0	0	0	90	90
Subsidence zone (excluding East Plant Site)	1,458	67	147	0	1,458	1,672
Transmission line (new 230 kV, from West Plant Site to Silver King Substation, via East Plant Site (Oak Flat Substation))	378	292	0	0	378	670
Access road	0	0	0	0	0	0
<i>Tailings storage facility–related components</i>						
Fence line (outside tailings storage facility)	1,553	41	0	0	1,553	1,594
Tailings storage facility	3,309	0	0	0	3,309	3,309
Pipeline	78	0	0	0	78	78
Total All Tailings Storage Facility Components	4,940	41	0	0	4,940	4,981
Grand Total All Components (excluding recreation and Silver King Road option)	7,186	2,282	312	0	7,186	9,780
<i>Silver King Road realignment option</i>						
Silver King Road realignment	9	4	0	0	9	13
<i>Recreation mitigation</i>						
Proposed RUG/Inconceivables	42	0	0	0	42	42
Castleberry Campground	2	48	0	0	2	50
Total Recreation Components	44	48	0	0	44	92

Notes for table 1, Alternatives 2 and 3

1. MARRCO – The GIS coverage used shows 6 acres of private land as Bureau of Reclamation lands; this was determined to be erroneous.
2. Filter plant and loadout facility – The GIS coverage shows 9 acres of private land as State land; this was determined to be erroneous.
3. Subsidence zone – Due to minor overlap with other project components, there is a 5-acre difference in the subsidence zone between alternatives. For simplicity, the subsidence zone acreage was kept constant as 1,672 acres for all alternatives.
4. Recreation mitigation acreage varies slightly in the GIS files, due in part to how road acreage is calculated. The assessment of RUG/Inconceivables mitigation is documented in the project record (PR #0003325), and acreages have been kept consistent with those initial calculations (RUG/Inconceivables = 42 acres; Castleberry Campground = 50 acres).

Table 2. Consistent FEIS acreages for Alternative 4

Component	Forest Service Ownership (acres)	Private Ownership (acres)	State Ownership (acres)	Other Ownership (acres)	Total Federal Ownership (acres)	Total Area (acres)
<i>Common components</i>						
West Plant Site	70	994	0	0	70	1,064
East Plant Site	85	104	0	0	85	189
MARRCO	235	285	165	0	235	685
Filter plant and loadout facility	0	0	0	0	0	0
Borrow areas	0	0	0	0	0	0
Subsidence zone (excluding East Plant Site)	1,458	67	147	0	1,458	1,672
Transmission Line (new 230 kV, from West Plant Site to Silver King Substation, via East Plant Site [Oak Flat Substation])	378	292	0	0	378	670
Access road	1	2	0	0	1	3
<i>Tailings storage facility–related components</i>						
Fence line (outside tailings storage facility)	3,350	44	0	0	3,350	3,394
Tailings storage facility	2,266	0	0	0	2,266	2,266
Pipeline	14	10	0	0	14	24
Total All Tailings Storage Facility Components	5,630	54	0	0	5,630	5,684
Grand Total All Components (excluding recreation and Silver King Road option)	7,857	1,798	312	0	7,857	9,967
<i>Silver King Road realignment option</i>						
Silver King Road realignment	9	4	0	0	9	13
<i>Recreation mitigation</i>						
Proposed RUG/Inconceivables	42	0	0	0	42	42
Castleberry Campground	2	48	0	0	2	50
Total Recreation Components	44	48	0	0	44	92

Notes for table 2, Alternative 4

1. MARRCO – The GIS coverage used shows 6 acres of private land as Bureau of Reclamation lands; this was determined to be erroneous.
2. Filter plant and loadout facility – Note that the filter plant for Alternative 4 is moved to the West Plant Site, hence more acreage for that component.
3. Subsidence zone – Due to minor overlap with other project components, there is a 5-acre difference in the subsidence zone between alternatives. For simplicity, the subsidence zone acreage was kept constant as 1,672 acres for all alternatives.
4. Recreation mitigation acreage varies slightly in the GIS files, due in part to how road acreage is calculated. The assessment of RUG/Inconceivables mitigation is documented in the project record (PR #0003325), and acreages have been kept consistent with those initial calculations (RUG/Inconceivables = 42 acres; Castleberry Campground = 50 acres).
5. Access road refers to a segment that connects U.S. Route 60 to MARRCO corridor (see attachment 2, figure 2-1).

Table 3. Consistent FEIS Acreages for Alternative 5

Component	Forest Service Ownership (acres)	Private Ownership (acres)	State Ownership (acres)	Other Ownership (acres)	Total Federal Ownership (acres)	Total Area (acres)
<i>Common components</i>						
West Plant Site	0	940	0	0	0	940
East Plant Site	85	104	0	0	85	189
MARRCO	235	285	165	0	235	685
Filter plant and loadout facility	0	553	0	0	0	553
Borrow areas	0	0	0	0	0	0
Subsidence zone (excluding East Plant Site)	1,458	67	147	0	1,458	1,672
Transmission line (new 230 kV, from West Plant Site to Silver King Substation, via East Plant Site [Oak Flat Substation])	378	292	0	0	378	670
Access road	0	2	0	7	0	9
<i>Tailings storage facility–related components</i>						
Fence line (outside tailings storage facility)	0	161	1,787	2,944	2,944	4,892
Tailings storage facility	0	0	2,366	3,523	3,523	5,889
Pipeline	493	107	137	576	1,069	1,313
Total All Tailings Storage Facility Components	493	268	4,290	7,043	7,536	12,094
Grand Total All Components (excluding recreation and Silver King Road option)	2,649	2,511	4,602	7,050	9,699	16,812
<i>Silver King Road realignment option</i>						
Silver King Road realignment	9	4	0	0	9	13
<i>Recreation mitigation</i>						
Proposed RUG/Inconceivables	42	0	0	0	42	42
Castleberry Campground	2	48	0	0	2	50
Total Recreation Components	44	48	0	0	44	92

Notes for table 3, Alternative 5

1. MARRCO – The GIS coverage used shows 6 acres of private land as Bureau of Reclamation lands; this was determined to be erroneous.
2. Filter plant and loadout facility – The GIS coverage shows 9 acres of private land as state land; this was determined to be erroneous.
3. Subsidence zone – Due to minor overlap with other project components, there is a 5-acre difference in the subsidence zone between alternatives. For simplicity, the subsidence zone acreage was kept constant as 1,672 acres for all alternatives.
4. Recreation mitigation acreage varies slightly in the GIS files, due in part to how road acreage is calculated. The assessment of RUG/Inconceivables mitigation is documented in the project record (PR #0003325) and acreages have been kept consistent with those initial calculations (RUG/Inconceivables = 42 acres; Castleberry Campground = 50 acres).
5. Access road – Other ownership refers to Bureau of Reclamation; refers to two segments of road needed to connect tailings pipeline to existing road network (see attachment 2, figure 2-2).
6. Tailings fence line and storage facility – Other ownership refers to Bureau of Land Management.
7. Tailings pipeline – Other ownership refers to 444 acres Bureau of Land Management and 132 acres Bureau of Reclamation.

Table 4. Consistent FEIS Acreages for Alternative 6

Component	Forest Service Ownership (acres)	Private Ownership (acres)	State Ownership (acres)	Other Ownership (acres)	Total Federal Ownership (acres)	Total Area (acres)
<i>Common components</i>						
West Plant Site	0	940	0	0	0	940
East Plant Site	85	104	0	0	85	189
MARRCO	235	285	165	0	235	685
Filter plant and loadout facility	0	553	0	0	0	553
Borrow areas	0	6	387	0	0	393
Subsidence zone (excluding East Plant Site)	1,458	67	147	0	1,458	1,672
Transmission lines (excludes colocation with tailings pipeline)	52	60	11	0	52	123
Access road	2	2	0	0	2	4
<i>Tailings storage facility–related components</i>						
Fence line (outside tailings storage facility)	0	627	4,589	0	0	5,216
Tailings storage facility	0	1,560	2,442	0	0	4,002
Pipeline	626	66	469	0	626	1,161
Total All Tailings Storage Facility Components	626	2,253	7,500	0	626	10,379
Grand Total All Components (excluding recreation and Silver King Road option)	2,458	4,270	8,210	0	2,458	14,938
<i>Silver King Road realignment option</i>						
Silver King Road realignment	9	4	0	0	9	13
<i>Recreation mitigation</i>						
Proposed RUG/Inconceivables	42	0	0	0	42	42
Castleberry Campground	2	48	0	0	2	50
Total Recreation Components	44	48	0	0	44	92

Notes for table 4, Alternative 6

1. MARRCO – The GIS coverage used shows 6 acres of private land as Bureau of Reclamation lands; this was determined to be erroneous.
2. Filter plant and loadout facility – The GIS coverage shows 9 acres of private land as State land; this was determined to be erroneous.
3. Subsidence zone – Due to minor overlap with other project components, there is a 5-acre difference in the subsidence zone between alternatives. For simplicity, the subsidence zone acreage was kept constant as 1,672 acres for all alternatives.
4. Recreation mitigation acreage varies slightly in the GIS files, due in part to how road acreage is calculated. The assessment of RUG/Inconceivables mitigation is documented in the project record (PR #0003325), and acreages have been kept consistent with those initial calculations (RUG/Inconceivables = 42 acres; Castleberry Campground = 50 acres).
5. Access road – Refers to multiple small segments needed to access tailings pipeline/transmission line corridor to existing road network (see attachment 2, figure 2-3).
6. Tailings pipeline includes these components:

Component	Forest Service Ownership (acres)	Private Ownership (acres)	State Ownership (acres)	Total Area (acres)
Pipeline (from West Plant Site to intersection with 230 kV line on Oak Flat)	134	3	0	137
Pipeline collocated with transmission line	329	62	442	833
Pipeline – Devil’s Canyon crossing (overhead span)	5	0	0	5
Pipeline – North tunnel (underground)	122	0	0	122

Component	Forest Service Ownership (acres)	Private Ownership (acres)	State Ownership (acres)	Total Area (acres)
Pipeline – Queen Creek crossing (overhead span)	3	0	0	3
Pipeline – Underground boring (under Mineral Creek)	33	1	27	61
Total	626	66	469	1,161

7. Transmission lines include these components:

Component	Forest Service Ownership (acres)	Private Ownership (acres)	State Ownership (acres)	Total Area (acres)
Transmission Line (230 kV, new from West Plant Site to East Plant Site [Oak Flat Substation])	0	43	0	43
Transmission Line (230 kV, new from East Plant Site [Oak Flat Substation] to tailings pipeline corridor, following existing 115 kV line)	26	9	0	35
Transmission Line (230 kV, new from tailings pipeline corridor to Silver King substation, following existing 115 kV line)	26	0	0	26
Transmission Mineral Creek Crossing (new 115 kV for tailings facility, only portion not collocated with pipeline)	0	8	11	19
Total	52	60	11	123

Consistent Acreage for Land Exchange

The following details the consistent acreage used in the FEIS for the land exchange parcels.

Table 5. Consistent land exchange parcel acreages

Parcel	Acreage	Notes
Oak Flat Federal Parcel	2,422	No change from Public Law (PL) 113-291
Apache Leap South End Parcel	140	PL 113-291 specified 110 acres for this parcel. Resolution Copper increased the offered parcel by an additional 32 acres, and minor map revisions were made of privately held land as part of the Apache Leap Special Management Area. The additional land was provided to allow for a more contiguous parcel to mitigate for Tribal and cultural values as part of mitigation RC-CR-04 (appendix J) and for ease of surveying.
Tangle Creek Parcel	148	No change from PL 113-291
Turkey Creek Parcel	147	No change from PL 113-291
Cave Creek Parcel	149	No change from PL 113-291
East Clear Creek Parcel	640	No change from PL 113-291
Lower San Pedro River Parcel	3,120	PL 113-291 specified 3,050 acres for this parcel. Final cadastral surveys were completed on the Lower San Pedro River Parcel, resulting in additional private acres that would be transferred to Federal ownership.
Appleton Ranch Parcel	956	PL 113-291 specified 940 acres for this parcel. Final cadastral surveys were completed on the Appleton Ranch Parcel, resulting in additional private acres that would be transferred to Federal ownership.
Dripping Springs Parcel	160	No change from PL 113-291
Total for Federal land to become private	2,422	No change from PL 113-291
Total for private land to become federal	5,460	PL 113-291 originally specified 5,344 acres

ATTACHMENT 1

GIS Acreages from SWCA Environmental Consultants, December 5, 2024

From: [Michael Standart](#)
To: [chris](#); [Victoria Boyne](#); [Donna Morey](#)
Subject: RE: Resolution - acreage mayhem
Date: Thursday, December 5, 2024 6:24:00 AM
Attachments: [image001.png](#)
[image002.png](#)
[image003.png](#)
[image004.png](#)
[image005.png](#)
[Alternative_Ownership_Calcs_12052024.xlsx](#)

Chris,
Attached are the ownership calcs with the Rec areas included.

From: chris@tarasqueconsulting.com <chris@tarasqueconsulting.com>
Sent: Wednesday, December 4, 2024 7:39 AM
To: Michael Standart <Michael.Standart@swca.com>; Victoria Boyne <vboyne@swca.com>; Donna Morey <dmorey@swca.com>
Subject: RE: Resolution - acreage mayhem

Hi Mike –

Can you give me a spreadsheet that looks like this that has these columns? If I had that I could use it as a master sheet to check all of our calculations in Chapter 2 and elsewhere:

- Area Name
- Alternative
- Ownership/Land Status
- Acreage

That would be the perfect tool for making sure we're consistent...

C

Contents of “Alternative Ownership Calcs_12052024.xlsx”

Area Name	Alt	Owner	Acres
Borrow_Area	Alternative 2	USFS	90.2140423
Castleberry Campground	Alternative 2	Private	3.074502256
Castleberry Campground	Alternative 2	Private	36.83726451
Castleberry Campground	Alternative 2	Private	0.039195505
Castleberry Campground	Alternative 2	Private	0.08772532
Castleberry Campground	Alternative 2	USFS	0.086296479
Castleberry Campground	Alternative 2	USFS	0.263614988
Castleberry Campground	Alternative 2	USFS	0.000479422
East_Plant_Site	Alternative 2	Private	13.91710128
East_Plant_Site	Alternative 2	Private	89.93909171
East_Plant_Site	Alternative 2	USFS	84.91785583
Fenceline	Alternative 2	Private	40.58402268
Fenceline	Alternative 2	USFS	1553.377234
Fenceline	Alternative 2	USFS	0.00127034
Filter_Plant_Site	Alternative 2	Private	543.7653629
Filter_Plant_Site	Alternative 2	State	8.741673365
Inconceivables	Alternative 2	USFS	1.432586598
Inconceivables	Alternative 2	USFS	14.66227496
MARRCO	Alternative 2	BR	5.875094911
MARRCO	Alternative 2	Private	17.31407018
MARRCO	Alternative 2	Private	28.53715865
MARRCO	Alternative 2	Private	0.002717715
MARRCO	Alternative 2	Private	0.086602617
MARRCO	Alternative 2	Private	8.13263411
MARRCO	Alternative 2	Private	153.4007542
MARRCO	Alternative 2	Private	71.96726368
MARRCO	Alternative 2	State	41.56282942
MARRCO	Alternative 2	State	123.1193335
MARRCO	Alternative 2	USFS	235.2308812
Pipeline	Alternative 2	USFS	50.27493121
Pipeline	Alternative 2	USFS	24.27480879
Pipeline	Alternative 2	USFS	3.350974942

Area Name	Alt	Owner	Acres
Pipeline	Alternative 2	USFS	0.00127034
Proposed RUG	Alternative 2	Private	0.001461174
Proposed RUG	Alternative 2	Private	0.050445967
Proposed RUG	Alternative 2	Private	0.071514457
Proposed RUG	Alternative 2	Private	0.002016565
Proposed RUG	Alternative 2	Private	0.039195505
Proposed RUG	Alternative 2	Private	0.08772532
Proposed RUG	Alternative 2	USFS	0.812933379
Proposed RUG	Alternative 2	USFS	22.55320095
Proposed RUG	Alternative 2	USFS	0.000479422
SilverKing_Realignment_Road	Alternative 2	Private	0.946093119
SilverKing_Realignment_Road	Alternative 2	Private	0.040714468
SilverKing_Realignment_Road	Alternative 2	Private	0.890131404
SilverKing_Realignment_Road	Alternative 2	Private	1.465524994
SilverKing_Realignment_Road	Alternative 2	Private	0.037903175
SilverKing_Realignment_Road	Alternative 2	Private	0.261797646
SilverKing_Realignment_Road	Alternative 2	Private	0.041582899
SilverKing_Realignment_Road	Alternative 2	USFS	1.929880451
SilverKing_Realignment_Road	Alternative 2	USFS	0.99522116
SilverKing_Realignment_Road	Alternative 2	USFS	6.134432799
SilverKing_Realignment_Road	Alternative 2	USFS	0.036277129
SilverKing_Realignment_Road	Alternative 2	USFS	0.213835175
Subsidence_Zone	Alternative 2	Private	27.14232655
Subsidence_Zone	Alternative 2	Private	40.02793478
Subsidence_Zone	Alternative 2	State	0.013297754
Subsidence_Zone	Alternative 2	State	141.776506
Subsidence_Zone	Alternative 2	USFS	9.397282411
Subsidence_Zone	Alternative 2	USFS	1448.880608
Tailings_Facility	Alternative 2	USFS	3309.431911
Transmission_Line	Alternative 2	Private	239.5489066
Transmission_Line	Alternative 2	Private	1.039742968
Transmission_Line	Alternative 2	Private	42.52306984
Transmission_Line	Alternative 2	Private	9.206022131

Area Name	Alt	Owner	Acres
Transmission_Line	Alternative 2	USFS	313.5463685
Transmission_Line	Alternative 2	USFS	7.522924777
Transmission_Line	Alternative 2	USFS	0.692102332
Transmission_Line	Alternative 2	USFS	25.77449584
Transmission_Line	Alternative 2	USFS	4.385960769
Transmission_Line	Alternative 2	USFS	25.92098067
West_Plant_Site	Alternative 2	Private	7.530305996
West_Plant_Site	Alternative 2	Private	932.433471
West_Plant_Site	Alternative 2	USFS	0.122823607
Access_Road	Alternative 4	Private	0.890131404
Access_Road	Alternative 4	Private	1.465524994
Access_Road	Alternative 4	Private	0.041582899
Access_Road	Alternative 4	USFS	0.99522116
Access_Road	Alternative 4	USFS	0.213835175
Alt_4_Loadout_Facility	Alternative 4	Private	0.132687218
Alt_4_Loadout_Facility	Alternative 4	Private	1.962855766
Alt_4_Loadout_Facility	Alternative 4	Private	7.530305996
Castleberry Campground	Alternative 4	Private	3.074502256
Castleberry Campground	Alternative 4	Private	36.83726451
Castleberry Campground	Alternative 4	Private	0.039195505
Castleberry Campground	Alternative 4	Private	0.08772532
Castleberry Campground	Alternative 4	USFS	0.086296479
Castleberry Campground	Alternative 4	USFS	0.263614988
Castleberry Campground	Alternative 4	USFS	0.000479422
East_Plant_Site	Alternative 4	Private	13.91710128
East_Plant_Site	Alternative 4	Private	89.93909171
East_Plant_Site	Alternative 4	USFS	84.91785583
Fenceline	Alternative 4	Private	23.76497027
Fenceline	Alternative 4	Private	20.11053876
Fenceline	Alternative 4	USFS	3306.793511
Fenceline	Alternative 4	USFS	0.004817867
Fenceline	Alternative 4	USFS	24.27480879
Fenceline	Alternative 4	USFS	18.8686074

Area Name	Alt	Owner	Acres
Filter_Plant_Site	Alternative 4	Private	543.7653629
Filter_Plant_Site	Alternative 4	State	8.741673365
Inconceivables	Alternative 4	USFS	1.432586598
Inconceivables	Alternative 4	USFS	14.66227496
MARRCO	Alternative 4	BR	5.875094911
MARRCO	Alternative 4	Private	17.31407018
MARRCO	Alternative 4	Private	28.53715865
MARRCO	Alternative 4	Private	0.002717715
MARRCO	Alternative 4	Private	0.086602617
MARRCO	Alternative 4	Private	8.13263411
MARRCO	Alternative 4	Private	153.4007542
MARRCO	Alternative 4	Private	71.96726368
MARRCO	Alternative 4	State	41.56282942
MARRCO	Alternative 4	State	123.1193335
MARRCO	Alternative 4	USFS	235.2308812
Pipeline	Alternative 4	Private	10.23385704
Pipeline	Alternative 4	USFS	14.46141418
Pipeline	Alternative 4	USFS	0.004817867
Proposed RUG	Alternative 4	Private	0.001461174
Proposed RUG	Alternative 4	Private	0.050445967
Proposed RUG	Alternative 4	Private	0.071514457
Proposed RUG	Alternative 4	Private	0.002016565
Proposed RUG	Alternative 4	USFS	0.812933379
Proposed RUG	Alternative 4	USFS	22.55320095
Subsidence_Zone	Alternative 4	Private	27.14232655
Subsidence_Zone	Alternative 4	Private	40.02793478
Subsidence_Zone	Alternative 4	State	0.013297754
Subsidence_Zone	Alternative 4	State	141.776506
Subsidence_Zone	Alternative 4	USFS	9.397282411
Subsidence_Zone	Alternative 4	USFS	1448.880608
Tailings_Facility	Alternative 4	USFS	2262.77461
Tailings_Facility	Alternative 4	USFS	3.350974942
Transmission_Line	Alternative 4	Private	239.5489066

Area Name	Alt	Owner	Acres
Transmission_Line	Alternative 4	Private	1.039742968
Transmission_Line	Alternative 4	Private	42.52306984
Transmission_Line	Alternative 4	Private	9.206022131
Transmission_Line	Alternative 4	USFS	313.5463685
Transmission_Line	Alternative 4	USFS	7.522924777
Transmission_Line	Alternative 4	USFS	0.692102332
Transmission_Line	Alternative 4	USFS	25.77449584
Transmission_Line	Alternative 4	USFS	4.385960769
Transmission_Line	Alternative 4	USFS	25.92098067
West_Plant_Site	Alternative 4	Private	58.68906373
West_Plant_Site	Alternative 4	Private	0.173400251
West_Plant_Site	Alternative 4	Private	3.033340188
West_Plant_Site	Alternative 4	Private	0.037903175
West_Plant_Site	Alternative 4	Private	932.433471
West_Plant_Site	Alternative 4	USFS	63.34647934
West_Plant_Site	Alternative 4	USFS	0.01362969
West_Plant_Site	Alternative 4	USFS	6.134432799
West_Plant_Site	Alternative 4	USFS	0.122823607
Access_Road	Alternative 5	BR	6.819956454
Access_Road	Alternative 5	Private	1.377103123
Access_Road	Alternative 5	Private	0.430759321
Castleberry Campground	Alternative 5	Private	36.83726451
Castleberry Campground	Alternative 5	Private	0.08772532
Castleberry Campground	Alternative 5	USFS	0.263614988
East_Plant_Site	Alternative 5	Private	13.91710128
East_Plant_Site	Alternative 5	Private	89.93909171
East_Plant_Site	Alternative 5	USFS	84.91785583
Fenceline	Alternative 5	BLM	2944.055961
Fenceline	Alternative 5	Private	3.775729607
Fenceline	Alternative 5	Private	156.9801902
Fenceline	Alternative 5	State	24.1955527
Fenceline	Alternative 5	State	1472.477519
Fenceline	Alternative 5	State	290.7189288

Area Name	Alt	Owner	Acres
Fenceline	Alternative 5	State	0.028161134
Filter_Plant_Site	Alternative 5	Private	543.7653629
Filter_Plant_Site	Alternative 5	State	8.741673365
Inconceivables	Alternative 5	USFS	14.66227496
MARRCO	Alternative 5	BR	5.875094911
MARRCO	Alternative 5	Private	17.31407018
MARRCO	Alternative 5	Private	28.53715865
MARRCO	Alternative 5	Private	0.002717715
MARRCO	Alternative 5	Private	0.086602617
MARRCO	Alternative 5	Private	8.13263411
MARRCO	Alternative 5	Private	153.4007542
MARRCO	Alternative 5	Private	71.96726368
MARRCO	Alternative 5	State	41.56282942
MARRCO	Alternative 5	State	123.1193335
MARRCO	Alternative 5	USFS	235.2308812
Pipeline	Alternative 5	BLM	58.37502364
Pipeline	Alternative 5	BLM	3.944327175
Pipeline	Alternative 5	BLM	68.25062877
Pipeline	Alternative 5	BLM	207.8621978
Pipeline	Alternative 5	BLM	0.005372776
Pipeline	Alternative 5	BLM	105.6904331
Pipeline	Alternative 5	BR	131.7625987
Pipeline	Alternative 5	Private	65.68223666
Pipeline	Alternative 5	Private	2.315110062
Pipeline	Alternative 5	Private	0.689243022
Pipeline	Alternative 5	Private	2.260966804
Pipeline	Alternative 5	Private	2.197619423
Pipeline	Alternative 5	Private	15.09533612
Pipeline	Alternative 5	Private	1.41838698
Pipeline	Alternative 5	Private	6.483949072
Pipeline	Alternative 5	Private	2.012603255
Pipeline	Alternative 5	Private	0.173400251
Pipeline	Alternative 5	Private	1.962855766

Area Name	Alt	Owner	Acres
Pipeline	Alternative 5	Private	3.033340188
Pipeline	Alternative 5	Private	0.261797646
Pipeline	Alternative 5	Private	0.041582899
Pipeline	Alternative 5	Private	3.074502256
Pipeline	Alternative 5	Private	0.001461174
Pipeline	Alternative 5	Private	0.039195505
Pipeline	Alternative 5	State	31.84555802
Pipeline	Alternative 5	State	104.6652808
Pipeline	Alternative 5	State	0.028161134
Pipeline	Alternative 5	USFS	469.6961348
Pipeline	Alternative 5	USFS	20.43905824
Pipeline	Alternative 5	USFS	0.01362969
Pipeline	Alternative 5	USFS	0.036277129
Pipeline	Alternative 5	USFS	0.213835175
Pipeline	Alternative 5	USFS	0.086296479
Pipeline	Alternative 5	USFS	0.812933379
Pipeline	Alternative 5	USFS	1.432586598
Pipeline	Alternative 5	USFS	0.000479422
Proposed RUG	Alternative 5	Private	0.050445967
Proposed RUG	Alternative 5	Private	0.071514457
Proposed RUG	Alternative 5	Private	0.002016565
Proposed RUG	Alternative 5	USFS	22.55320095
Subsidence_Zone	Alternative 5	Private	27.14232655
Subsidence_Zone	Alternative 5	Private	40.02793478
Subsidence_Zone	Alternative 5	State	0.013297754
Subsidence_Zone	Alternative 5	State	141.776506
Subsidence_Zone	Alternative 5	USFS	9.397282411
Subsidence_Zone	Alternative 5	USFS	1448.880608
Tailings_Facility	Alternative 5	BLM	3523.652389
Tailings_Facility	Alternative 5	State	2365.580523
Transmission_Line	Alternative 5	Private	239.5489066
Transmission_Line	Alternative 5	Private	1.039742968
Transmission_Line	Alternative 5	Private	42.52306984

Area Name	Alt	Owner	Acres
Transmission_Line	Alternative 5	Private	9.206022131
Transmission_Line	Alternative 5	USFS	313.5463685
Transmission_Line	Alternative 5	USFS	7.522924777
Transmission_Line	Alternative 5	USFS	0.692102332
Transmission_Line	Alternative 5	USFS	25.77449584
Transmission_Line	Alternative 5	USFS	4.385960769
Transmission_Line	Alternative 5	USFS	25.92098067
West_Plant_Site	Alternative 5	Private	7.530305996
West_Plant_Site	Alternative 5	Private	932.433471
West_Plant_Site	Alternative 5	USFS	0.122823607
Access Roads	Alternative 6	BLM	0.008851744
Access Roads	Alternative 6	Private	0.551148287
Access Roads	Alternative 6	Private	1.039742968
Access Roads	Alternative 6	State	0.030034385
Access Roads	Alternative 6	USFS	1.247723762
Access Roads	Alternative 6	USFS	0.692102332
Borrow Area	Alternative 6	Private	5.582840084
Borrow Area	Alternative 6	State	172.5820854
Borrow Area	Alternative 6	State	214.4534264
Borrow Area	Alternative 6	State	4.44366E-05
Castleberry Campground	Alternative 6	Private	3.074502256
Castleberry Campground	Alternative 6	Private	36.83726451
Castleberry Campground	Alternative 6	Private	0.039195505
Castleberry Campground	Alternative 6	Private	0.08772532
Castleberry Campground	Alternative 6	USFS	0.086296479
Castleberry Campground	Alternative 6	USFS	0.263614988
Castleberry Campground	Alternative 6	USFS	0.000479422
East Plant Site	Alternative 6	Private	13.91710128
East Plant Site	Alternative 6	Private	89.93909171
East Plant Site	Alternative 6	USFS	84.91785583
Filter Plant Disturbance	Alternative 6	Private	543.7653629
Filter Plant Disturbance	Alternative 6	State	8.741673365
Inconceivables	Alternative 6	USFS	1.432586598

Area Name	Alt	Owner	Acres
Inconceivables	Alternative 6	USFS	14.66227496
MARRCO	Alternative 6	BR	5.875094911
MARRCO	Alternative 6	Private	17.31407018
MARRCO	Alternative 6	Private	28.53715865
MARRCO	Alternative 6	Private	0.002717715
MARRCO	Alternative 6	Private	0.086602617
MARRCO	Alternative 6	Private	8.13263411
MARRCO	Alternative 6	Private	153.4007542
MARRCO	Alternative 6	Private	71.96726368
MARRCO	Alternative 6	State	41.56282942
MARRCO	Alternative 6	State	123.1193335
MARRCO	Alternative 6	USFS	235.2308812
Pipeline	Alternative 6	Private	3.342116345
Pipeline	Alternative 6	USFS	52.33231964
Pipeline	Alternative 6	USFS	58.43083692
Pipeline	Alternative 6	USFS	18.8686074
Pipeline	Alternative 6	USFS	4.385960769
Pipeline and Transmission Line Collocated	Alternative 6	Private	41.36290818
Pipeline and Transmission Line Collocated	Alternative 6	Private	20.20478684
Pipeline and Transmission Line Collocated	Alternative 6	State	131.4684567
Pipeline and Transmission Line Collocated	Alternative 6	State	310.0838948
Pipeline and Transmission Line Collocated	Alternative 6	USFS	321.2816155
Pipeline and Transmission Line Collocated	Alternative 6	USFS	7.522924777
Pipeline Devils Canyon Span	Alternative 6	USFS	5.378993455
Pipeline North Tunnel	Alternative 6	USFS	121.9851683
Pipeline Queen Creek Span	Alternative 6	USFS	3.237064202
Pipeline Underground Boring	Alternative 6	Private	0.609032217
Pipeline Underground Boring	Alternative 6	State	2.583344133
Pipeline Underground Boring	Alternative 6	State	24.82219616
Pipeline Underground Boring	Alternative 6	USFS	32.92815075
Proposed RUG	Alternative 6	Private	0.001461174
Proposed RUG	Alternative 6	Private	0.050445967
Proposed RUG	Alternative 6	Private	0.071514457

Area Name	Alt	Owner	Acres
Proposed RUG	Alternative 6	Private	0.002016565
Proposed RUG	Alternative 6	USFS	0.812933379
Proposed RUG	Alternative 6	USFS	22.55320095
Silver King Realignment	Alternative 6	Private	0.946093119
Silver King Realignment	Alternative 6	Private	0.040714468
Silver King Realignment	Alternative 6	Private	0.890131404
Silver King Realignment	Alternative 6	Private	1.465524994
Silver King Realignment	Alternative 6	Private	0.037903175
Silver King Realignment	Alternative 6	Private	0.261797646
Silver King Realignment	Alternative 6	Private	0.041582899
Silver King Realignment	Alternative 6	USFS	1.929880451
Silver King Realignment	Alternative 6	USFS	0.99522116
Silver King Realignment	Alternative 6	USFS	6.134432799
Silver King Realignment	Alternative 6	USFS	0.036277129
Silver King Realignment	Alternative 6	USFS	0.213835175
Subsidence Zone	Alternative 6	Private	27.14232655
Subsidence Zone	Alternative 6	Private	40.02793478
Subsidence Zone	Alternative 6	State	4.84280689
Subsidence Zone	Alternative 6	State	141.776506
Subsidence Zone	Alternative 6	USFS	9.776929104
Subsidence Zone	Alternative 6	USFS	1448.880608
Tailings Fenceline	Alternative 6	Private	4.569405646
Tailings Fenceline	Alternative 6	Private	485.6691602
Tailings Fenceline	Alternative 6	Private	68.59183472
Tailings Fenceline	Alternative 6	Private	40.20764325
Tailings Fenceline	Alternative 6	Private	17.23869988
Tailings Fenceline	Alternative 6	Private	0.145687892
Tailings Fenceline	Alternative 6	Private	10.78941709
Tailings Fenceline	Alternative 6	State	4589.133183
Tailings Fenceline	Alternative 6	State	4.44366E-05
Tailings Storage Facility	Alternative 6	Private	69.96796011
Tailings Storage Facility	Alternative 6	Private	1365.184407
Tailings Storage Facility	Alternative 6	Private	4.544836106

Area Name	Alt	Owner	Acres
Tailings Storage Facility	Alternative 6	Private	80.55377001
Tailings Storage Facility	Alternative 6	Private	40.062274
Tailings Storage Facility	Alternative 6	State	2441.809446
Transmission Line 115kV	Alternative 6	Private	42.52306984
Transmission Line 115KV 230Kv	Alternative 6	Private	9.206022131
Transmission Line 115KV 230Kv	Alternative 6	USFS	25.92098067
Transmission Line 115kV 230kV 115kV	Alternative 6	USFS	25.77449584
Transmission Mineral Creek Crossing	Alternative 6	Private	8.269916183
Transmission Mineral Creek Crossing	Alternative 6	State	1.840061954
Transmission Mineral Creek Crossing	Alternative 6	State	9.392102958
West Plant Site	Alternative 6	Private	0.001655146
West Plant Site	Alternative 6	Private	7.530305996
West Plant Site	Alternative 6	Private	932.433471
West Plant Site	Alternative 6	USFS	0.122823607

ATTACHMENT 2

Locations of Access Roads, Alternatives 4, 5, and 6

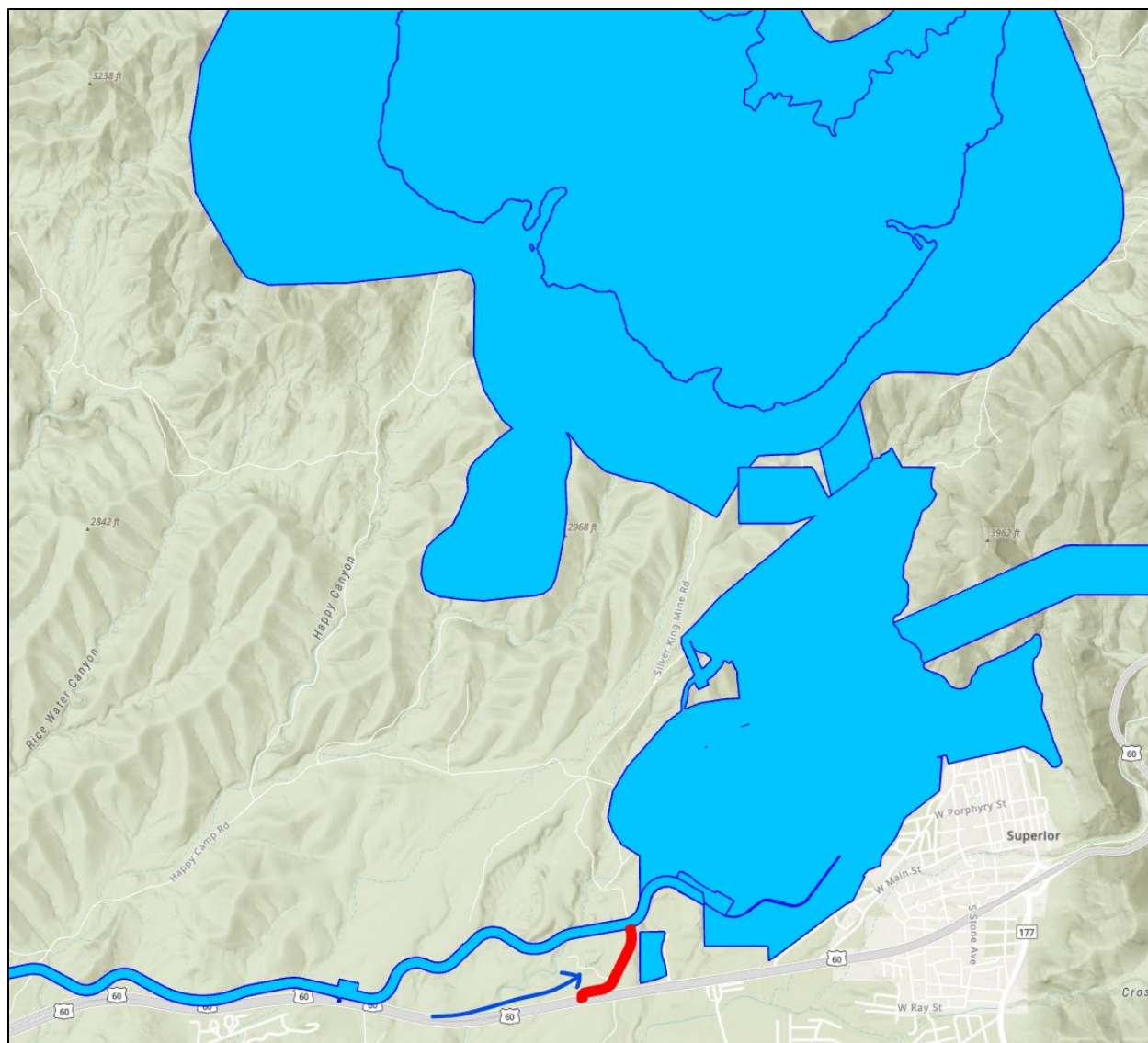


Figure 2-1. Location of access road for Alternative 4

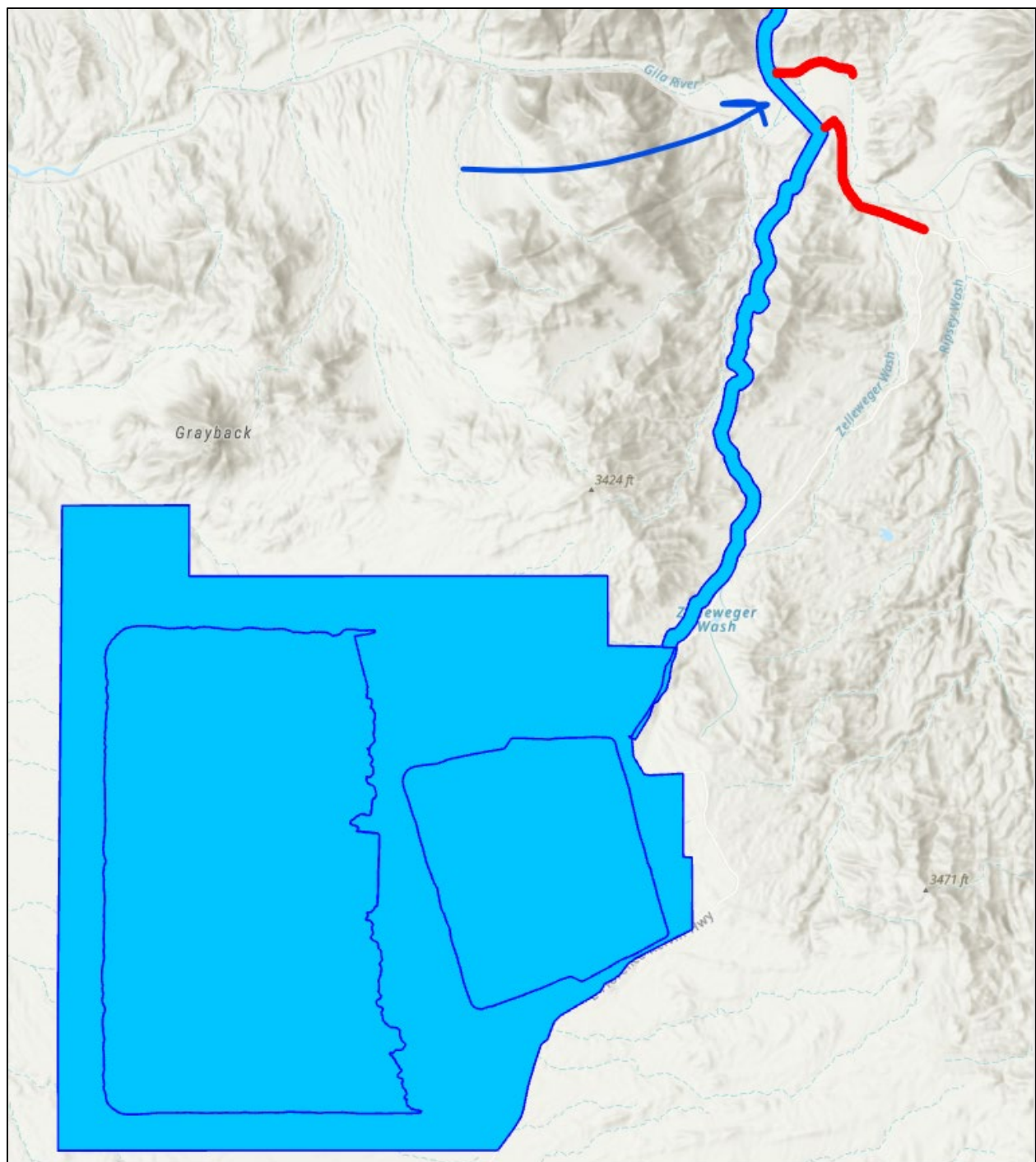


Figure 2-2. Location of access roads for Alternative 5

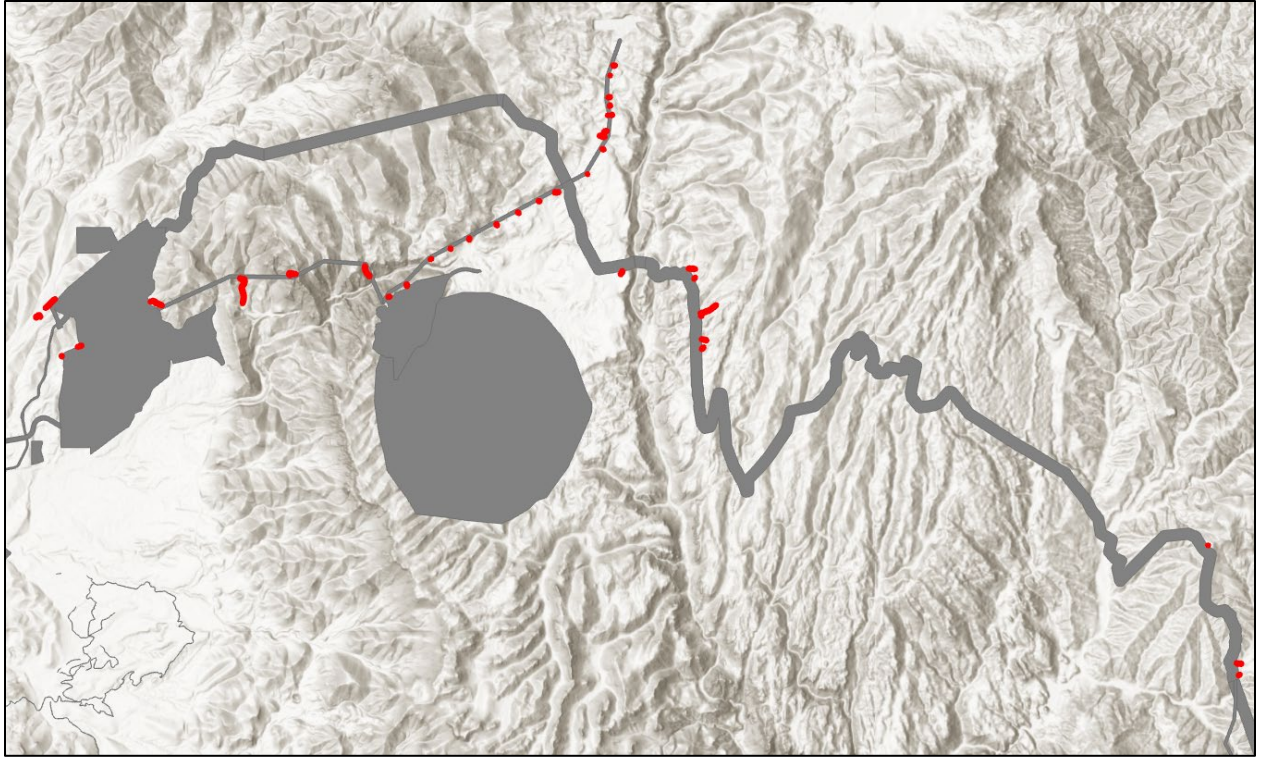


Figure 2-3. Location of access roads for Alternative 6