

**ACCESS AND MANAGEMENT PLAN
OAK FLAT CAMPGROUND**

**Resolution Copper Mining, LLC
November 13, 2020**

Table of Contents

1.	Introduction and Background.....	1
2.	Existing Campground Conditions.....	1
3.	Current Campground Access and Management by the Tonto National Forest	3
4.	Campground Access and Management by Resolution Copper	5

Figures
(follow text)

- | | |
|-----------|---------------------------------------|
| Figure 1. | Vicinity Map |
| Figure 2. | Campground Overview with Access Roads |
| Figure 3. | Oak Flat Campground |

1. Introduction and Background

Oak Flat Campground (the campground) is a 50-acre site located immediately East of Superior along the Gila-Pinal Scenic Route U.S. Highway 60 (**Figure 1**). The 16-campsite campground sits within a larger parcel known as the Oak Flat Parcel (Oak Flat). Currently, Oak Flat and the campground are located on U.S. Forest Service (USFS) lands managed by the Tonto National Forest (TNF).

In 2015, Section 3003 of the National Defense Authorization Act for Fiscal Year 2015 (NDAA, or the Act) authorized the exchange of lands between the federal government and Resolution Copper Mining, LLC (Resolution). The Act directs the conveyance of the approximately 2,422-acre Oak Flat parcel, which is part of the National Forest System (NFS), to Resolution. According to the Act, ownership of the Oak Flat parcel, including the campground, must be transferred from the United States to Resolution. Consistent with the Act, specific to public access in and around the campground and as a condition of the conveyance, Resolution shall provide access to the surface of the campground to members of the public including Native American Tribes to the maximum extent practicable, consistent with health and safety requirements, until such time as actions related to or arising from the operation of the mine precludes continued public access for safety reasons, as determined by Resolution.

This document outlines the access and management plan for the campground once transfer of ownership is complete. This document contains four sections: a description of the existing campground (**Section 2**), current management of the campground by TNF (**Section 3**), proposed management of the campground by Resolution (**Section 4**), and accommodations for engagement and use by Native American Tribes (**Section 5**).

2. Existing Campground Conditions

2.1. Environmental Setting

The campground lies within the mountainous Pinal Highlands on the northeastern edge of the Basin and Range physiographic province.¹ This region is transitional to the Central Highlands bordering the Colorado Plateau province. The local physiography is defined by the Apache Leap, a prominent escarpment rising sharply east of Superior. The campground is located at approximately 4,800 feet above mean sea level within a relatively flat upland basin. The Oak Flat Parcel is characterized by horizontal stratified volcanic rocks (tuff) that have eroded into numerous canyons, plateaus, and scarps.²

Vegetation within the campground is mapped as Interior Chaparral vegetation community³. Dominant plants including scrub live oak (*Quercus turbinella*), Emory oak, pointleaf manzanita (*Arctostaphylos pungens*), one-seed juniper (*Juniperus monosperma*), chaparral honeysuckle (*Lonicera interrupta*), Wright siltkassel (*Garrya wrightii*), redberry buck-thorn (*Rhamnus crocea*), and a variety of grasses, and forbs. In 2020, several of the mature oaks in the campground were removed by the Forest Service due to instability and safety concerns.⁴

¹ Chronic, Halka. 1983. *Roadside Geology of Arizona*. Missoula, Montana: Mountain Press Publishing Company.

² Nations, Dale, and Edmund Stump. 1996. *Geology of Arizona*. Second ed. Dubuque, Iowa: Kendall/Hunt Publishing Company.

³ Brown, David. E. 1994. *Biotic Communities – Southwestern United States and Northwestern Mexico*. Salt Lake City, Utah: University of Utah Press.

⁴ Personal Communication via phone with Sherly Cormack of the TNF on October 26, 2020.

2.2. *Camping*

The campground contains 16 designated camp sites each with a picnic table and fire pit grill (**Photos 1-3**). Unimproved dispersed camping is also available in the immediate area. Much of the dispersed camping occurs along Forest Road (FR) 2438, which is not regularly maintained, requiring users to have four-wheel drive and high-clearance vehicle to access camping there. There are no designated group camp sites.

Designated and dispersed camp sites are available on a first-come, first-served basis. No fees are collected from campground users. There is currently a 14-day stay limit for camping at the site, however, this has been waived by the TNF for members of the Apache Stronghold who have had a permanent presence at the campground since 2015.



Photo 1. Campsite with table and firepit with grill.



Photo 2. Close-up of a campground firepit.



Photo 3. One of 16 designated campsites in the campground.



Photo 4. One of the vault toilets in the campground.

2.3. Toilets

There are two accessible vault toilets located within the campground (**Photo 4**).

2.4. Parking

Parking is located at each campsite. Two parking areas are located just northeast of the entrance and can accommodate approximately six to eight vehicles each (**Figure 3**).

2.5. Waste Disposal

The campground is a ‘pack it in, pack it out’ site. There are no trash receptacles within the campground. Users are expected to haul away their own waste.

2.6. Potable Water

There is no potable water source within the campground. Users must bring their own water.

2.7. Electricity

There is no electricity available within the campground.

2.8. Trails

There are no designated hiking, equestrian, or Off-Highway Vehicle (OHV) trails located within the campground. The TNF restricts access to unauthorized trails as-needed to facilitate natural rehabilitation.

3. Current Campground Access and Management by the Tonto National Forest

3.1. Access

The campground is used year-round by both day and overnight users; the heaviest use period is during the cooler weather of fall and early spring.⁴ The campground is accessed via U.S. Highway 60 to Magma Mine Road. A TNF sign is located at the entrance of the campground (**Photo 5**). An information kiosk is located within the campground (**Photo 6**). In addition to the main access road, several unauthorized roads have been created within the campground by users to access dispersed camping. There are no gates on the entrance to the campground.



Photo 5. TNF signage at campground entrance.



Photo 6. Information kiosk at the campground.

3.2. *Annual Maintenance*

The campground is currently inspected by TNF annually for safety hazards, management needs and other problems. In areas of overuse, the TNF will block off portions of the campground with barricades and signage to reduce use and allow the area to rehabilitate.

The toilet vaults are pumped out on an as-needed basis. The one closest to the entry road is currently pumped twice per year and the second toilet is usually pumped once per year.

3.3. *Weekly Maintenance*

The following tasks are completed at least once weekly throughout the year. During periods of heavy use (September to May and weekends), the campground amenities are spot-checked and maintained more frequently.

Interior of Toilet Buildings:

- Clean and sanitize interior and exterior of toilet risers, seats and lids.
- Fill toilet paper supply.
- Sweep or pressure wash floors and walls.
- Squeegee/ mop floors.
- Deodorize and “float” vault contents (ensure that waste is below water level).
- Remove or cover graffiti.

Exterior of Toilets Buildings:

- Sweep off cobwebs, cocoons, and loose dirt and debris.
- Sweep off cement foundation, sidewalks, and entrance.
- Rake around doors and building.
- Clear path to toilets of any obstructions.
- Remove or address safety hazards.
- Remove or cover graffiti.
- Trim branches away from buildings.

Camp Sites and Picnic Sites:

- Remove weeds and litter and rake core areas.
- Break up rock fire rings, shovel ashes and coals into waste container, and haul debris offsite.
- Prune tree branches.
- Picnic tables:
 - Clean tabletop and benches with high pressure washer.
 - Sweep/wash off cobwebs.
 - Check legs and tabletops for steadfastness.
 - Remove or cover graffiti.
- Grills:
 - Sweep ashes and coals into waste container and haul debris offsite.
 - Stack unburned firewood away from grill or disperse into surrounding area.

Information Kiosk:

- Remove weeds, brush and litter from and around boards.
- Paint or stain at least once per year, more if necessary.

3.4. Fire Management

There is no specific fire management program for the campground. In general, wildfire is managed at a national level under the U.S. Department of Agriculture and Department of the Interior's Forest and Rangeland's National Fire Plan.⁵

3.5. Notifications

All notifications regarding the campground are posted via TNF's website and on the information kiosk located within the campground.

3.6. Camp Host

The TNF allows camp hosts at this campground. The primary responsibility of the camp host is to greet users, provide information about the campground and facilities, and provide daily maintenance and cleaning of campground. In return, the camp host can stay at the campground for an extended period for free. The TNF routinely posts requests for a volunteer Camp Host at Volunteer.gov. If a volunteer applies and is approved, the TNF provides them with a camp site, water buffalo tank, and solar panels to use while volunteering. It is important to note that there is currently no campground host and there has not been a host in the recent past.

3.7. Permits

USFS Special Use Permits are required for events greater than 75 people. Native American ceremonies are not required to obtain a permit. Generally, tribes will notify and coordinate with the district ranger regarding tribal ceremonies to be held at the campground.

3.8. Events

The campground has been used more recently for Native American Sunrise Ceremonies. Through coordination with the District Ranger, events can reserve portions of the campground, however campers are not forced to vacate their campsites if established prior to the event. The campground remains open to campers and day users during events.

3.9. Closures

The campground is open year-round and will only close for emergencies. In the event of an emergency closure, TNF will block the campground entrance road with a barricade and signage.

4. Campground Access and Management by Resolution Copper

Resolution proposes to operate the campground consistent with current TNF practice, to the extent practicable, with the goal of maintaining continued safe and sanitary conditions for continued public use. The following sections describe how Resolution will manage the campground.

⁵ U.S. Department of Agriculture. 2020. <https://www.forestsandrangelands.gov/strategy/index.shtml>

4.1. Access

The site will continue to be accessed from Magma Mine Road. All authorized roads per the Tonto National Forest Travel Management Plan will be maintained at their current maintenance level. Unauthorized roads or trails will be closed.

The 14-day maximum camping policy will continue, however, it will be waived for members of the Apache Stronghold who have had a permanent presence at the campground since 2015.

4.2. Campsites

The 16 existing designated campsites and amenities will remain open (**Figure 2**) under the current procedures.

4.3. Toilets

The two existing vault toilets will remain open.

4.4. Parking

Parking will remain as-is. No new parking improvements are proposed.

4.5. Waste Disposal

The campground will remain a 'pack it in, pack it out' site. There will continue to be no trash receptacles within the campground. Users are still expected to haul away their own waste.

4.6. Potable Water

Users must continue bring their own water with them. There will continue to be no potable water sources within the campground.

4.7. Electricity

There will continue to be no electricity available within the campground.

4.8. Trails

No designated hiking, equestrian, or OHV trails will be created within the campground. Any unauthorized trails may be subject to closure and rehabilitation.

4.9. Annual Maintenance

The campground will be inspected annually for safety hazards, management needs and other problems.

The toilet vaults will be pumped out on an as-needed basis, approximately three times per year for both toilets.

4.10. Weekly Maintenance

The following tasks will be completed on a regular basis (i.e. weekly) throughout the year. During periods of heavy use (September to May and weekends), the campground may be spot-checked and maintained more frequently and on an as-needed basis:

Interior of Toilet Buildings:

- Clean and sanitize interior and exterior of toilet risers, seats, and lids.
- Fill toilet paper supply.
- Sweep or pressure wash floors and walls.
- Squeegee/mop floors.
- Deodorize and “float” vault contents.
- Remove or cover graffiti.

Exterior of Toilets Buildings:

- Sweep off cobwebs, cocoons, loose dirt, and debris.
- Sweep off cement foundation, sidewalks, and entrance.
- Rake around doors and building.
- Clear path to toilets of any obstructions.
- Remove or address safety hazards.
- Remove or cover graffiti.
- Trim branches away from buildings.

Camp Sites and Picnic Sites:

- Remove weeds and litter from core areas and rake.
- Break up rock fire rings, shovel ashes and coals into waste container and haul debris offsite.
- Prune tree branches.
- Picnic tables:
 - Clean tabletop and benches.
 - Sweep/ wash off cobwebs.
 - Check legs and tabletops for steadfastness.
 - Remove or cover graffiti.
- Grills:
 - Sweep ashes and coals into waste container and haul debris offsite.
 - Stack unburned firewood away from grill or disperse.

Bulletin Boards and Signage:

- Remove weeds and brush from around boards.
- Clean, paint or stain as needed.

4.11. Fire Management

Fire management for the campground will continue to be implemented consistent with the existing Forests and Rangeland’s National Fire Plan.

4.12. Notifications

Information and notifications regarding the campground will be posted on Resolutions website and signage will be posted at the information kiosk located within the campground.

4.13. Events

The campground will continue to host Sunrise Ceremonies and other related events. No event fees will be charged. Additional information regarding Tribal ceremonies is provided below.

4.14. Temporary Closures

The campground will remain open year-round, including during events. The campground will only close in the event of an emergency. If an emergency should occur, Resolution will barricade the entrance road and place signage as needed.

4.15. Accommodations for Engagement and Use by Native American Tribes

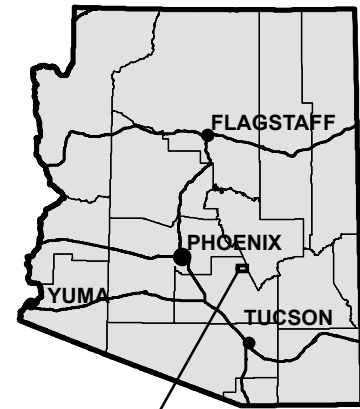
Consultation with Native American Tribes interested on management of the campground is ongoing and will continue. Accommodations for closure of facilities, when appropriate, will be made for Native American tribal activities including, but not limited to, collection of plant materials, acorn gathering, tribal ceremonies, etc. Decisions about whether a process will be established for closure during ceremonies will be part of ongoing discussions with Native American Tribes.

4.16. Closure

Resolution will determine when it is necessary, for safety reasons related to or arising from the operation of the mine, to preclude public access to the campground. Upon this determination, Resolution will provide as much notice as possible to the public.

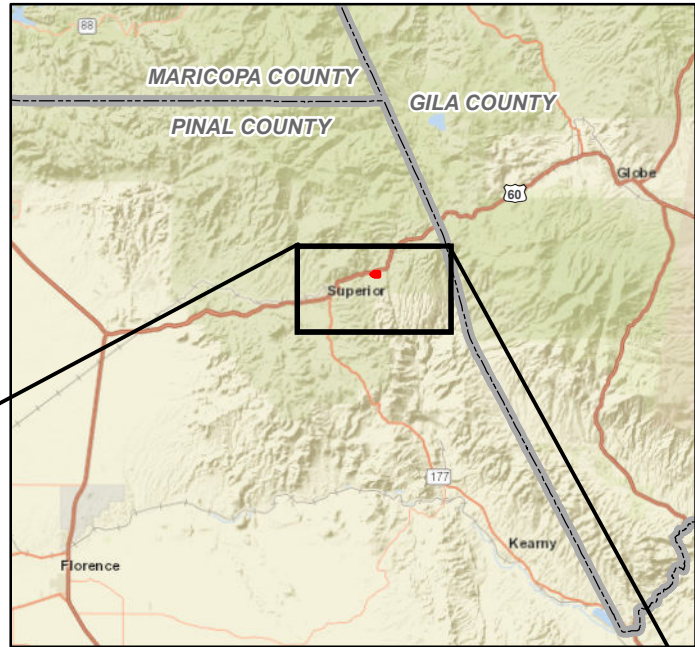
FIGURES

ARIZONA

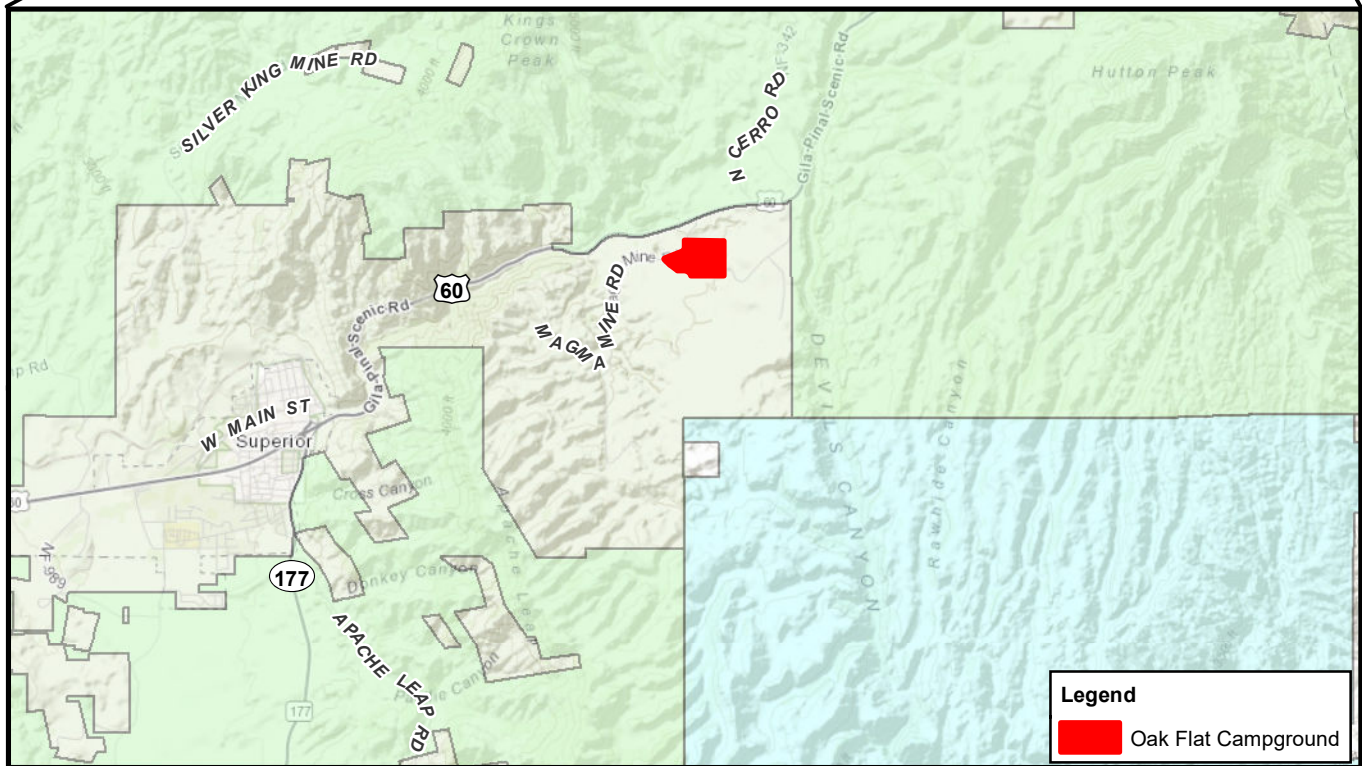


PROJECT
LOCATION

PROJECT VICINITY



Approximate Scale 1 Inch = 12 Miles



Campground Within:
T1S, R13E, Portion of Section 28,
Pinal County, Arizona
Post Land Exchange Surface Management: BLM, WRI Modified 2019
Image Source: ArcGIS Online, World Street Map and World Topographic Map

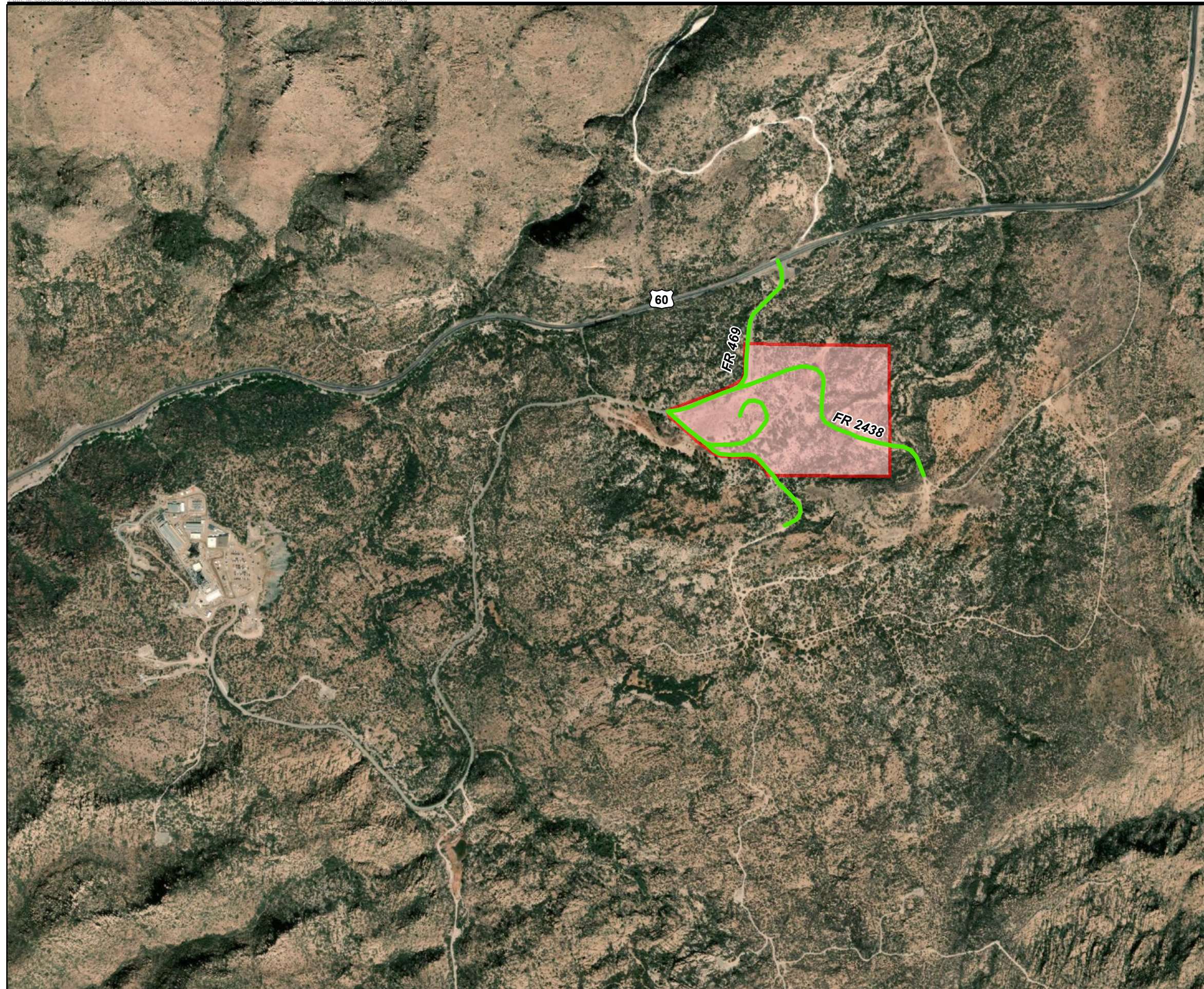
RESOLUTION COPPER Oak Flat Campground Management Plan

VICINITY MAP
Figure 1



0 0.5 1
Miles

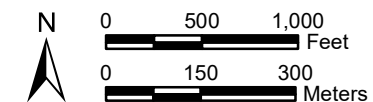
0 1 2
Kilometers



Campground Within:
T1S, R13E, Portion of Section 28,
Pinal County, Arizona
Data Source: Tonto National Forest Roads, 6-9-2014
Image Source: ArcGIS Online World Imagery 2-6-2018

Legend

- Existing Forest Road - Public Access Maintained
- Oak Flat Campground



RESOLUTION COPPER Oak Flat Campground Management Plan

CAMPGROUND OVERVIEW
WITH ACCESS ROADS

Figure 2



Campground Within:
T1S, R13E, Portion of Section 28,
Pinal County, Arizona
Image Source: ArcGIS Online World Imagery 2-6-2018

Legend

 Oak Flat Campground

N



0 100 200
Feet

0 30 60
Meters



WestLand Resources

RESOLUTION COPPER
Oak Flat Campground
Management Plan

OAK FLAT CAMPGROUND
Figure 3