



Fact Sheet 04-12

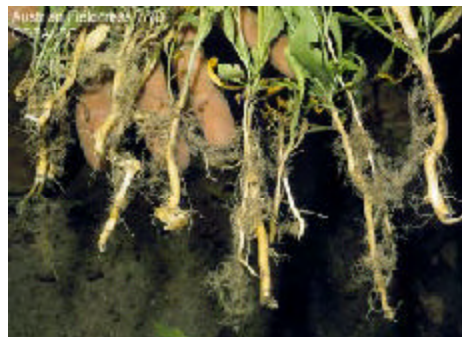
# WANTED—Dead, Not Alive!

This outlaw weed is hiding out! Find it. Eradicate it.

## Austrian Fieldcress

Alias: *Rorippa austriaca* (Crantz) Bess.

**A**ustrian fieldcress is a very competitive and persistent perennial that typically grows in wet soil. It spreads primarily by reproducing vegetatively through creeping roots, but it can also be distributed by seed and detached root fragments. Once established, Austrian fieldcress competes vigorously and may threaten native species. This weed has been found in Nevada and is listed as a noxious weed by Nevada Administrative Code.



Austrian fieldcress is found on disturbed and cultivated sites, roadsides, fields, and mud flats. New plants establish in disturbed areas and are favored by soils that are wet six to eight months of the year.

### Distinguishing features:

- ◆ 1 to 3 feet tall, smooth stems are erect or ascending and branched at the top.
- ◆ The leaves are alternate. Upper leaves clasp the stem, and the lower-most leaves are larger and have petioles.
- ◆ Flowers form in loose clusters at the tips of branches with 4 small yellow petals.
- ◆ Small, nearly spherical or oblong seed pods have a distinct tip. Seeds are small, brown to black, and rough or warty.
- ◆ Taproots are deep, thick, and fleshy with fine, fibrous roots and extensive creeping lateral roots.

### Take action:

- ◆ Report its location to the landowner, gardener, manager, park ranger or weed district.
- ◆ Remove all weed seeds from your clothing, shoes, pets, camping gear, vehicle, and tire treads before moving out of an infested area.
- ◆ Monitor ornamental plantings, disturbed sites, and slopes with a southern exposure. Carefully remove any seeds and dig up the plant. Dispose of the seeds, shoots, and roots in a sealed garbage bag through the trash. Herbicides may also be available to kill this plant.

### Your reward:

A cleaner, healthier environment and the satisfaction that you have helped make a difference!

### For more information about controlling this and other invasive weeds, contact:

University of Nevada Cooperative Extension  
775-784-1334;  
Nevada Department of Agriculture  
775-688-1182; or  
Your local Weed District manager or Conservation District:



**COOPERATIVE EXTENSION**

*Bringing the University to You*

Photographs courtesy California Department of Food and Agriculture, Noxious Weed Photo Gallery.  
[pi.cdfa.ca.gov/weedinfo/photogalleryframeset.html](http://pi.cdfa.ca.gov/weedinfo/photogalleryframeset.html)